

Historic Research.

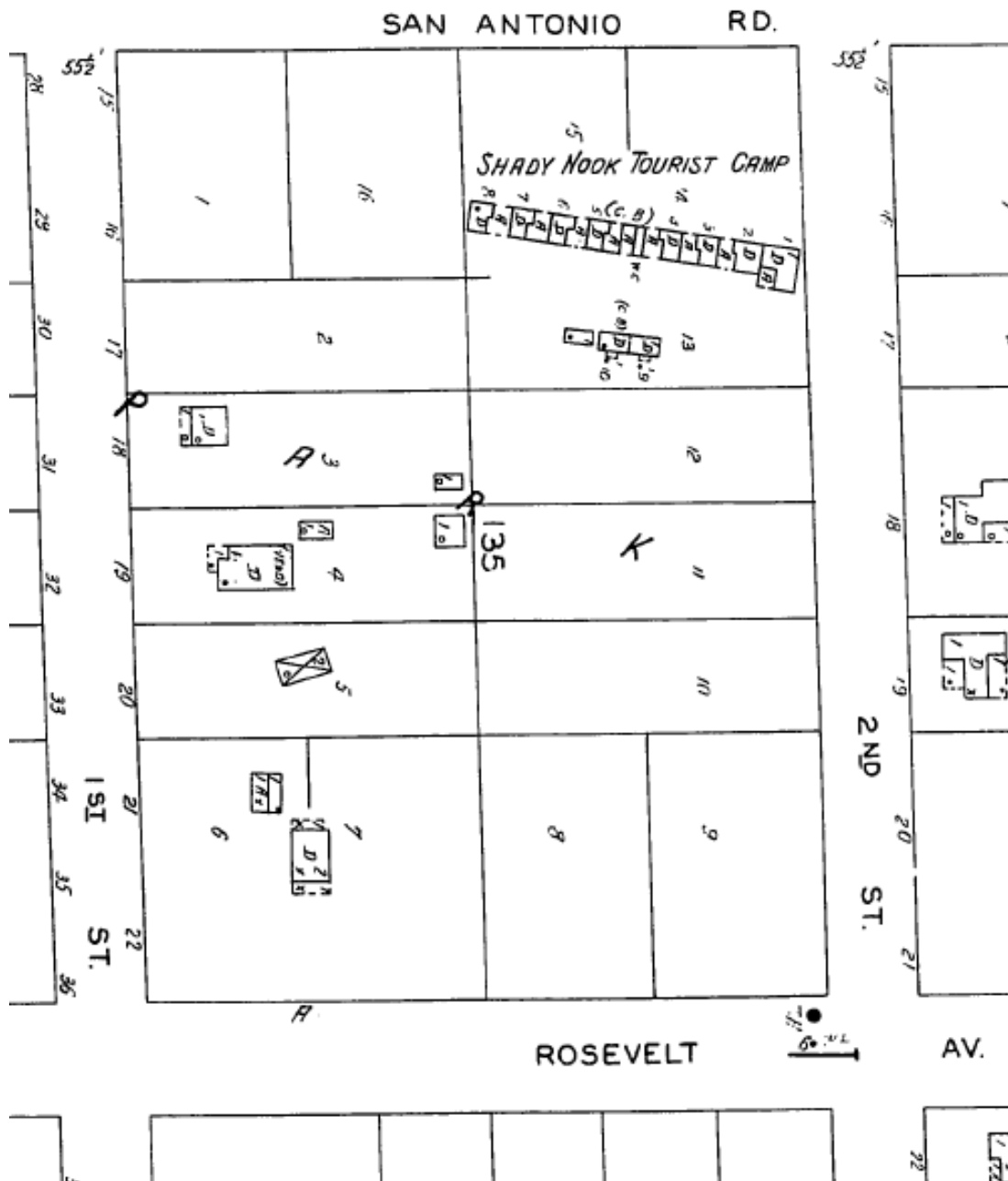


Figure 1: Sandborn Map (source: Sandborn Map 1937, Boerne Texas, June 1937, page 5)

The property is shown in the 1937 Sandborn Fire Insurance Map as “Shady Nook Tourist Camp”. According to research the structure was built around 1920, and it was made of several cabins, with space between them to park your vehicle. Some site descriptions talk about a water closed and miniature golf in front of the property as well. Unfortunately, we could not find a picture of the property from that time.

The only picture, beside the Sandborn Map is from a add, published in a newspaper from Kerrville in 1933.

**STOP AT**  
**SHADY NOOK TOURIST CAMP**  
Private (Garage, Shower, Toilet) in  
*all cabins; furnished or unfurnished.*  
Safe for Mother, Wife or Daughter.  
Pure Water—Tables on Grounds  
Plenty Shade  
Rates by Month or Week  
Joe Craven, Prop, Boerne, Texas

The structure was altered to the current configuration around 1973 and transformed into low-income rental apartments.