



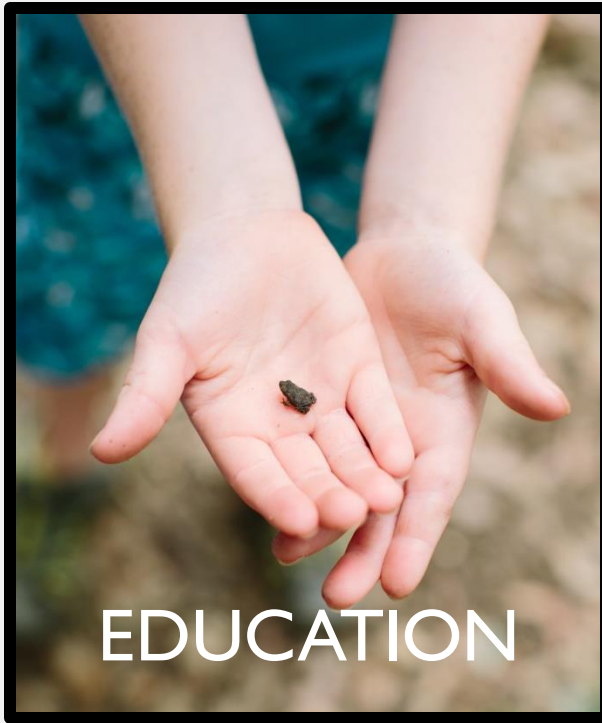
CITY OF
BOERNE
CITY COUNCIL
SEPTEMBER 22 2020



OUR STORY



WHAT WE DO



OUTDOOR LEARNING

20,000 people served annually

- Land Owner Education
- Summer Camps
- Outdoor Classroom Field Trips
- Meadowlands - Deep Roots
- Nature Boxes
- Homeschool Programs



CIBOLO
NATURE
SCHOOL

COMMUNITY CONNECTION

100,000 visitors served annually through:

- Open trails
 - Moondance concerts
 - Programs
 - Family Festivals
 - Mostly-Native Plant Sale
-
- 50% are from out of town



APPLIED RESEARCH

- 22 years of Citizen Science
- University Partnerships
- Civic Engagement
- Land Conservation
- Watershed Protection
- International Monarch research
- Texas Stream Team – 24 years

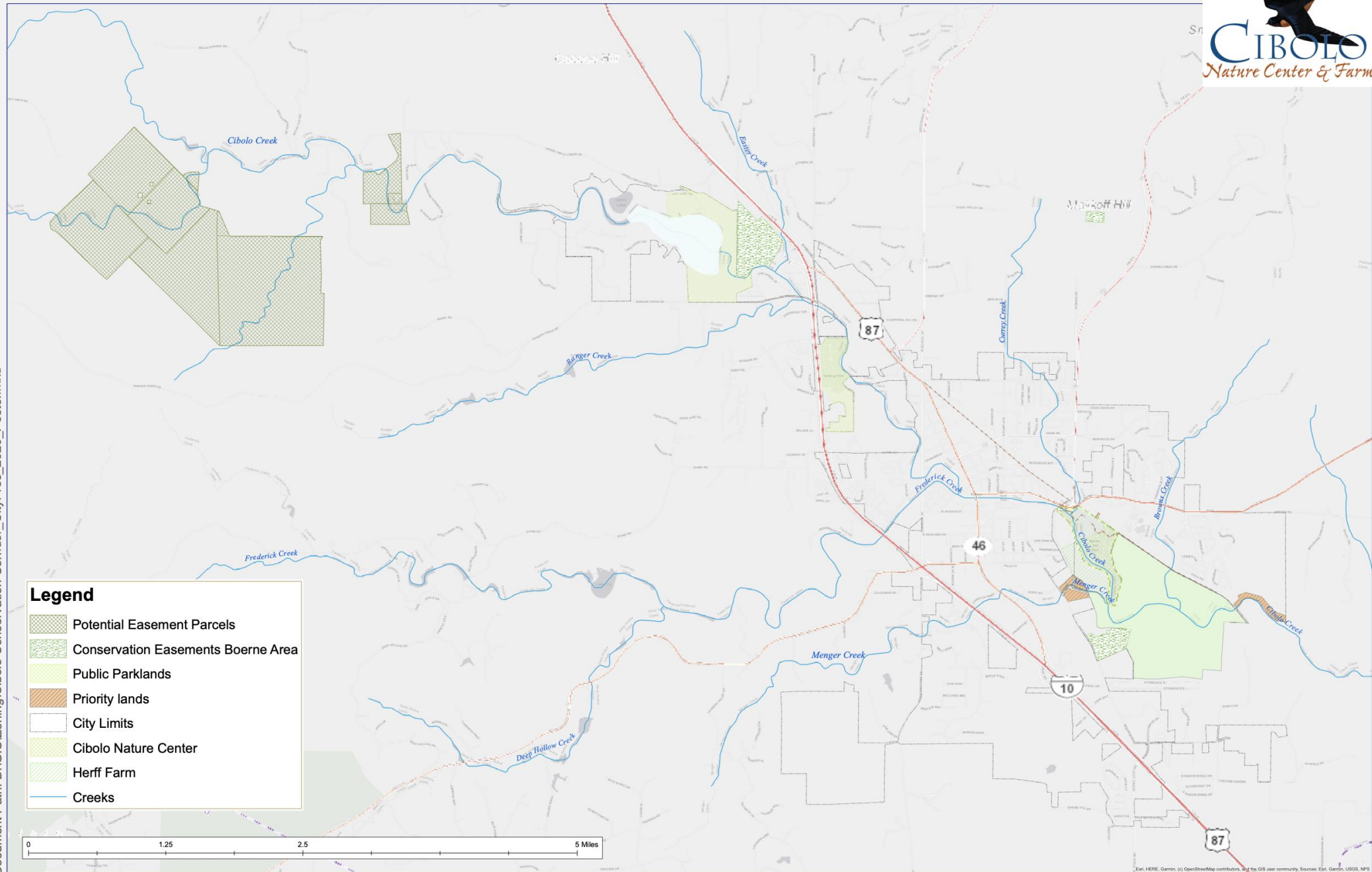




Cibolo Conservation Corridor - Headwaters to Recharge

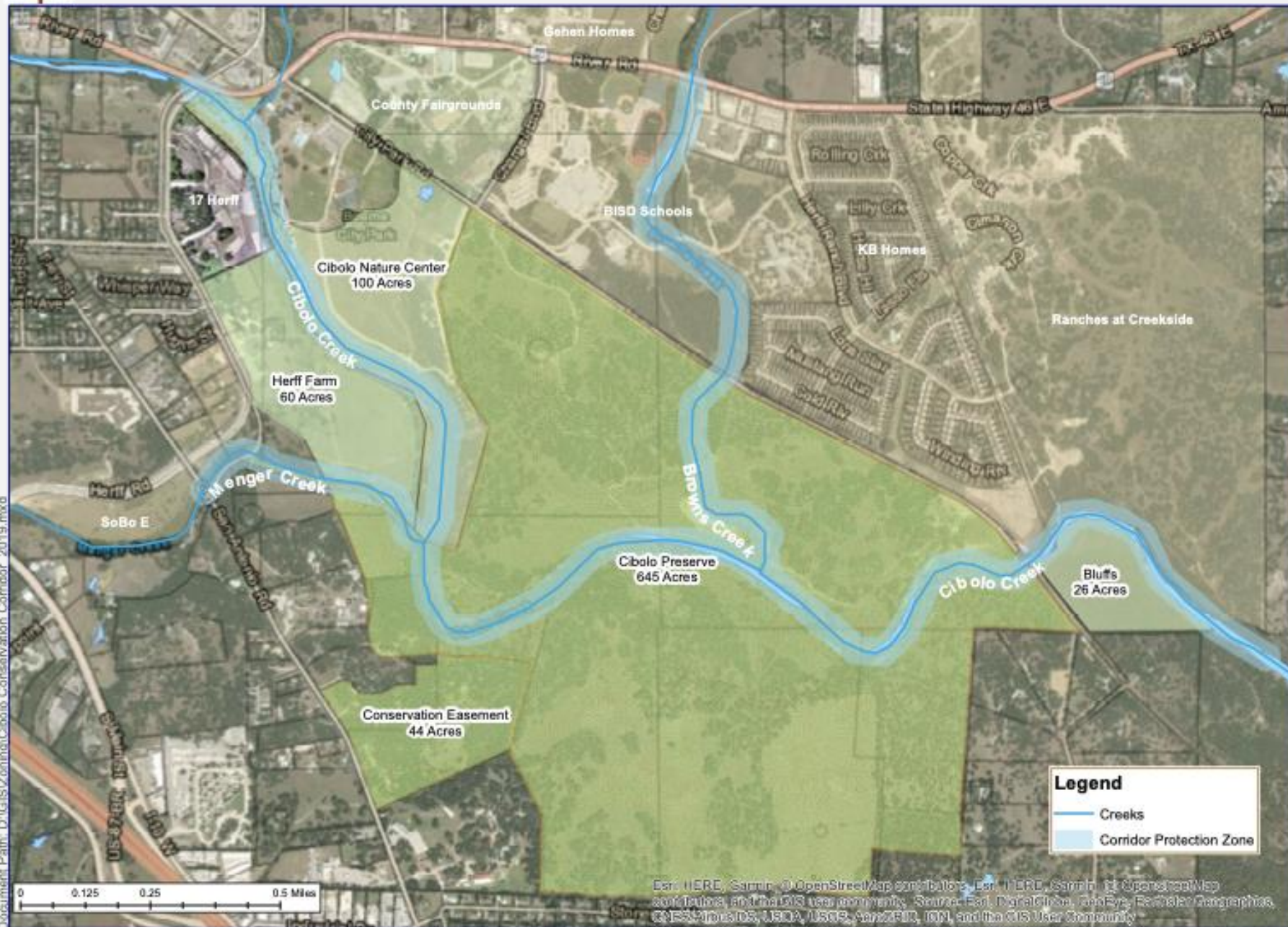


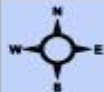
Document Path: D:\GIS\Zoning\Cibolo Conservation Corridor_CityPres_2020_Poster.mxd



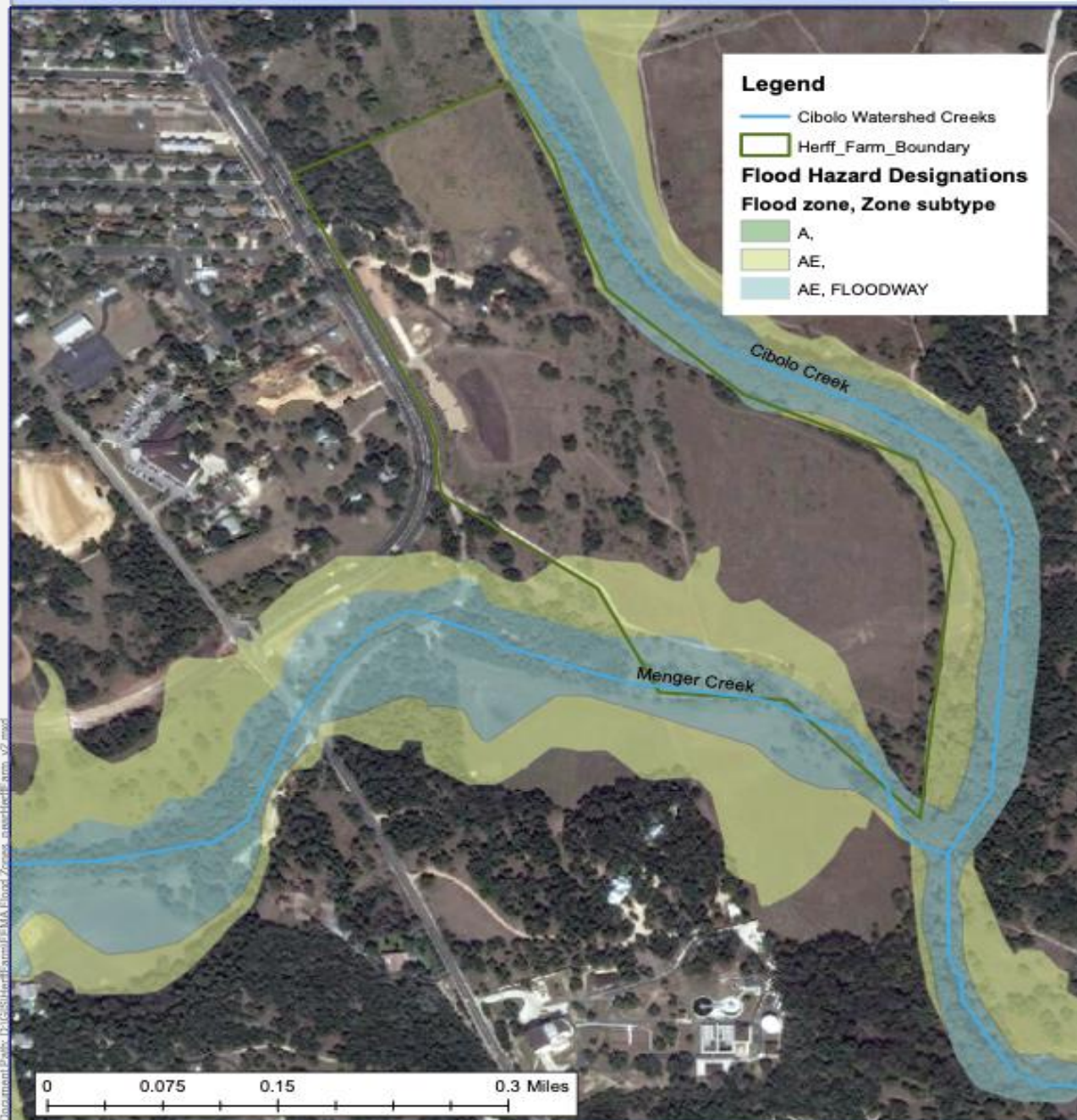


Cibolo Conservation Corridor





FEMA flood zones and Zoning Changes

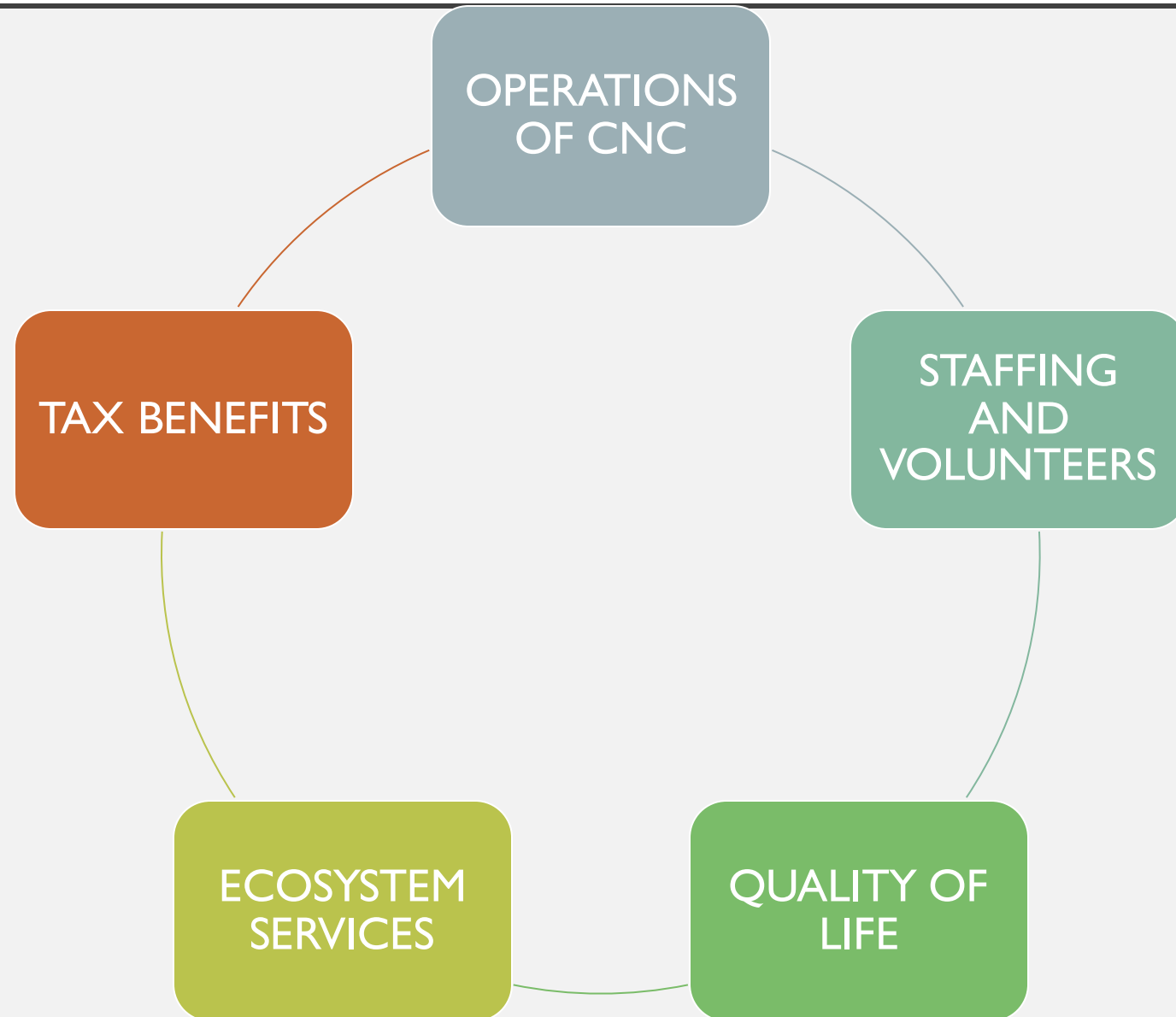


A photograph of a dirt path leading through a field of yellow and red flowers towards a dense forest. The path is made of gravel and dirt, winding through the field. The flowers are in full bloom, and the forest in the background is lush and green.

CIBOLO NATURE CENTER & CITY OF BOERNE PARTNERSHIP

Thank city for partnership of CNC

THE BENEFIT OF THE CNC&F TO CITY OF BOERNE



FACILITIES AND LAND MANAGEMENT

In 2005 the CNC built a \$2M educational facility in Boerne City Park at no expense to taxpayers.

The Friends of Cibolo Wilderness organization has an annual operating cost of \$1,444,000.

Facilities:

- Building Maintenance
- Restroom / Pavillion Maintenance
- Security Monitoring
- Utilities

Grounds:

- Park Rangers
- Trail and Driveway Maintenance
- Trash Pick-Up
- Tree Care
- Garden and Landscape Management

Land Management & Conservation

- Land Management Plan by Rufus Stephens
- Invasive Removal
- Prescribed Burns
- Wildlife Monitoring & Support

Programs:

- Youth Education
- Community Engagement & Adult Education

STAFF & VOLUNTEERS

- Staff Salaries & Benefits totaled **\$1,069,000** in 2019
 - 14 Fulltime Employees
 - 9 Part-time Employees
 - 30 Seasonal Summercamp Counselors
- Volunteer hours in 2019:
- 9,875 hours X \$25.43/hr = **\$251,000**

A group of people, including a man in a green cap and grey shirt, a woman with a blue backpack, and a young boy in a striped shirt, are hiking on a dirt path through a wooded area. The path is surrounded by tall grass and trees.

BOERNE QUALITY OF LIFE

Attracts Business investment:

- Recruitment and retention of employees
- Marketing Boerne to businesses

Mental and Physical Health:

- Physical fitness
- Stress reduction

Recreation:

- Hiking
- Birding
- Creek time

Community cohesion:

- Family & social connection



RESILIENT ECOSYSTEM SERVICES

Reducing infrastructure investment by taxpayers and the city by:

- Trees
- Clean water
- Water conservation
- Flood mitigation
- Native landscaping

ADDITIONAL BENEFITS

Sales Tax Benefit

- Tourist destination for out-of-towners
- Recreation destination for birders, hikers

Tax Base

Improves property values and thereby increases tax base

Marketability

Photographers:

- 700 per year
- 560 in 2020 already

NEW VISION
AND
A NEW BRAND
FOR THE FUTURE



