



LANDSCAPE ORDINANCE

3.09.005 SCREENING - PARKING AREAS (1-10 FRONTAGE ROAD)
LANDSCAPE SCREENING USING DESIGN CRITERIA WITHIN ORDINANCE IN COMBINATION WITH EXISTING LANDSCAPE ALONG FRONTAGE ROAD. LANDSCAPE ALSO ADDRESSED DESIGN STANDARDS FOR DEVELOPMENT OF PROPERTY WITH STREET FRONTAGE 3.09.008 SECTION F. SCREENING FOR PARKING.

3.10.012 LANDSCAPING OF PARKING AREAS (COLLISION CENTER)
PARKING FOR OVER 100 VEHICLES (SERVICE PARKING) SITE NOT ADEQUATE IN SIZE FOR THIRD PARKING BAY & CORRESPONDING LANDSCAPE REQUIREMENTS.

332 PARKING SPACES / 12 = 28 TREES REQUIRED	39 PARKING LOT TREES PROVIDED
28 TREES REQUIRED X 10 SHRUBS = 280 SHRUBS REQUIRED	283 SHRUBS PROVIDED

4.06.002 MINIMUM RATIO OF TREES TO LOT FRONTAGE	8 TREES PROVIDED IN LOT FRONT
325 LF. OF FRONTAGE / 40LF. = 8 TREES REQUIRED	

SIGNAGE NOTE

BUILDING AND SITE SIGNAGE TO BE PERMITTED SEPARATELY BY VENDOR AND WILL MEET ALL CITY OF BOERNE SIGN ORDINANCE REQUIREMENTS.



SCALE: 1" = 60'

0 15 30 60 120

GOREE
ARCHITECTS
WWW.GOREEARCHITECTS.COM



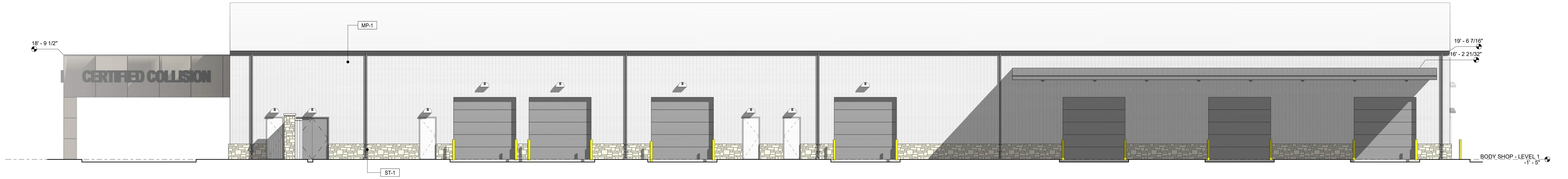
TOYOTA OF BOERNE COLLISION CENTER

31205 INTERSTATE 10 FRONTAGE RD., BOERNE, TX 78006

COMPOSITE SITE PLAN

9/9/2019

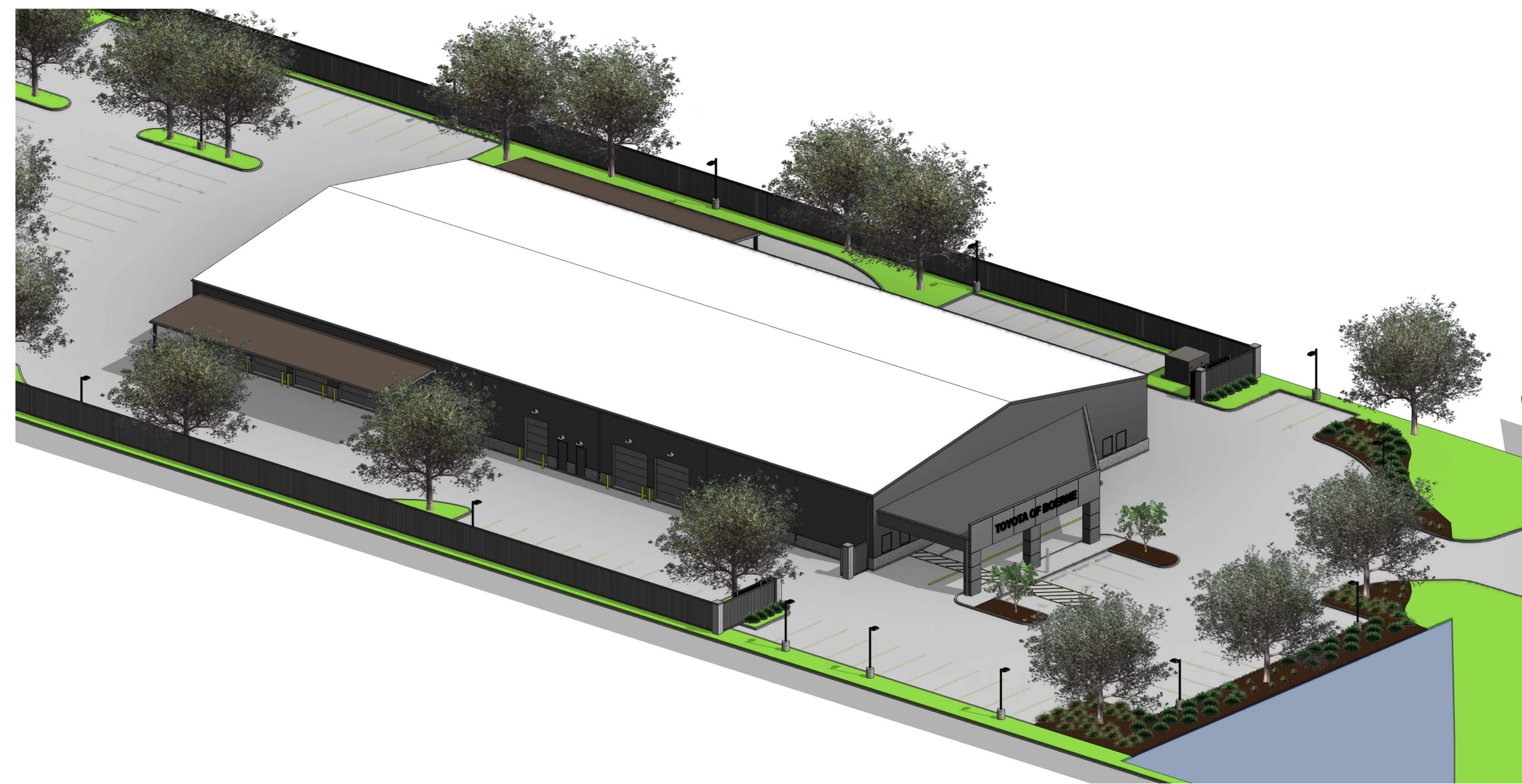
THIS DRAWING AND THE BIM/CAD FILE FROM WHICH IT HAS BEEN GENERATED ARE PROVIDED AS AN INSTRUMENT OF SERVICE FOR THIS PROJECT. THESE DOCUMENTS ARE THE SOLE PROPERTY OF GOREE ARCHITECTS, INC. ANY USE OF THESE DOCUMENTS, DATA AND DESIGNS FOR PURPOSES OTHER THAN THOSE ASSOCIATED WITH THIS PROJECT WITHOUT THE EXPRESSED, WRITTEN PERMISSION OF GOREE ARCHITECTS, INC. IS PROHIBITED.



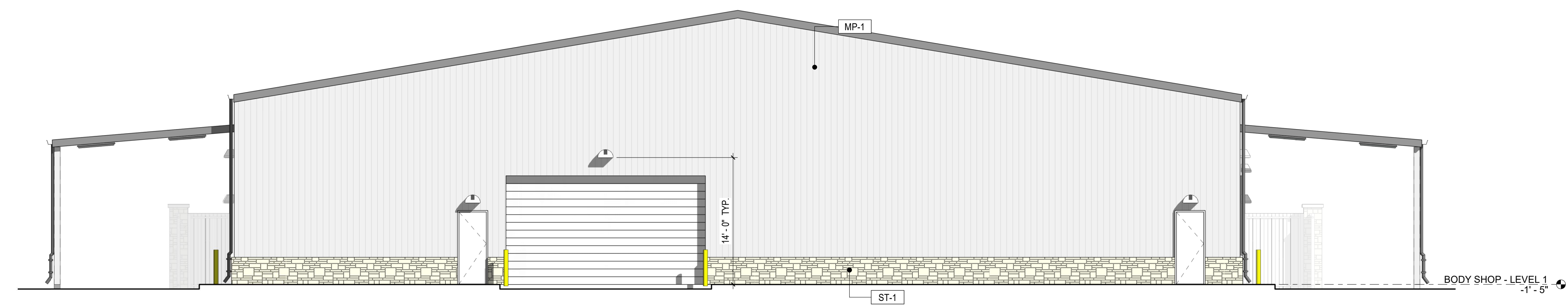
4 BODY SHOP - NORTH ELEVATION Copy 1
1/8" = 1'-0"



3 BODY SHOP - SOUTH ELEVATION Copy 1
1/8" = 1'-0"



2 BODY SHOP - EAST ELEVATION Copy 1
1/8" = 1'-0"



1 BODY SHOP - WEST ELEVATION Copy 1
1/8" = 1'-0"

