



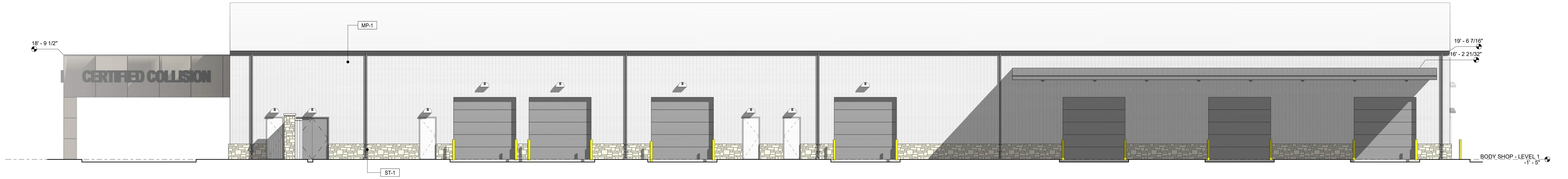


LANDSCAPE ORDINANCE	
3.09.005 SCREENING - PARKING AREAS (1-10 FRONTAGE ROAD) LANDSCAPE SCREENING USING DESIGN CRITERIA WITHIN ORDINANCE IN COMBINATION WITH EXISTING LANDSCAPE ALONG FRONTAGE ROAD. LANDSCAPE ALSO ADDRESSED DESIGN STANDARDS FOR DEVELOPMENT OF PROPERTY WITH STREET FRONTAGE 3.09.008 SECTION F. SCREENING FOR PARKING.	
3.10.012 LANDSCAPING OF PARKING AREAS (COLLISION CENTER) PARKING FOR OVER 100 VEHICLES (SERVICE PARKING) SITE NOT ADEQUATE IN SIZE FOR THIRD PARKING BAY & CORRESPONDING LANDSCAPE REQUIREMENTS.	
332 PARKING SPACES / 12 = 28 TREES REQUIRED 28 TREES REQUIRED X 10 SHRUBS = 280 SHRUBS REQUIRED	39 PARKING LOT TREES PROVIDED 283 SHRUBS PROVIDED
4.06.002 MINIMUM RATIO OF TREES TO LOT FRONTAGE 325 LF. OF FRONTAGE / 40LF. = 8 TREES REQUIRED	8 TREES PROVIDED IN LOT FRONT

SIGNAGE NOTE
BUILDING AND SITE SIGNAGE TO BE PERMITTED SEPARATELY BY VENDOR AND WILL MEET ALL CITY OF BOERNE SIGN ORDINANCE REQUIREMENTS.



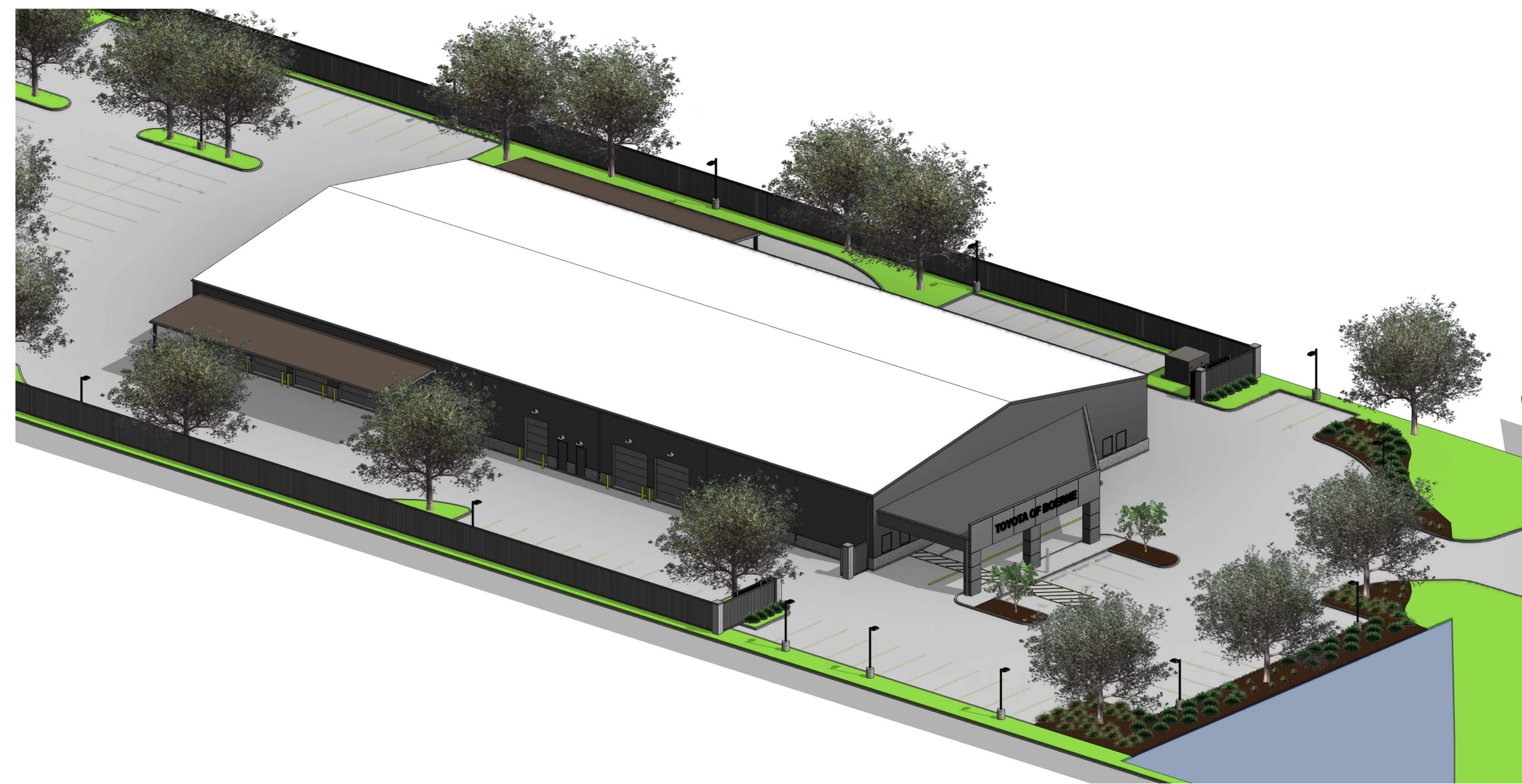




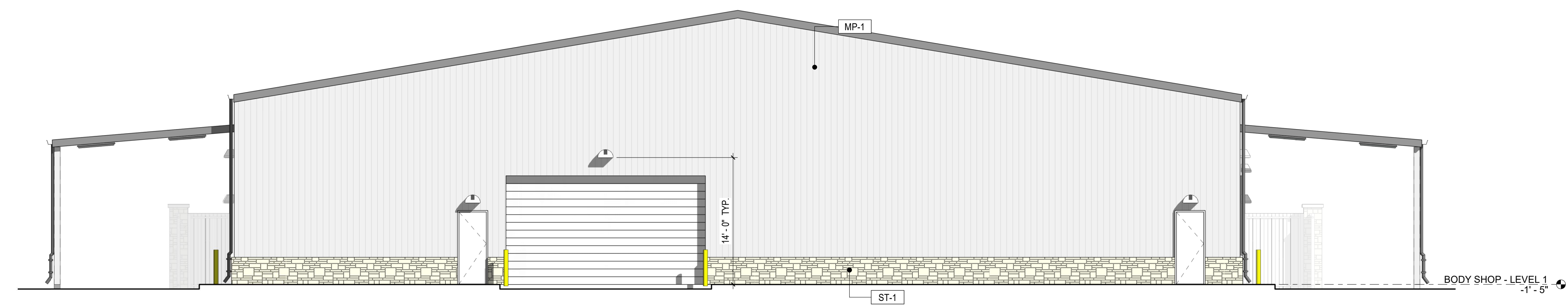
4 BODY SHOP - NORTH ELEVATION Copy 1  
1/8" = 1'-0"



3 BODY SHOP - SOUTH ELEVATION Copy 1  
1/8" = 1'-0"



2 BODY SHOP - EAST ELEVATION Copy 1  
1/8" = 1'-0"



1 BODY SHOP - WEST ELEVATION Copy 1  
1/8" = 1'-0"

