

LEGEND

RW

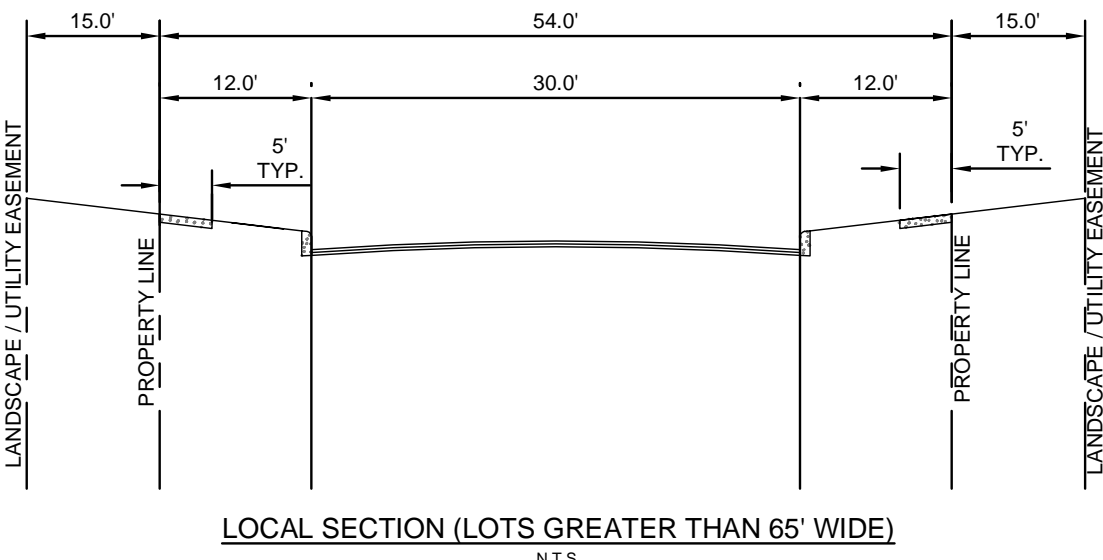
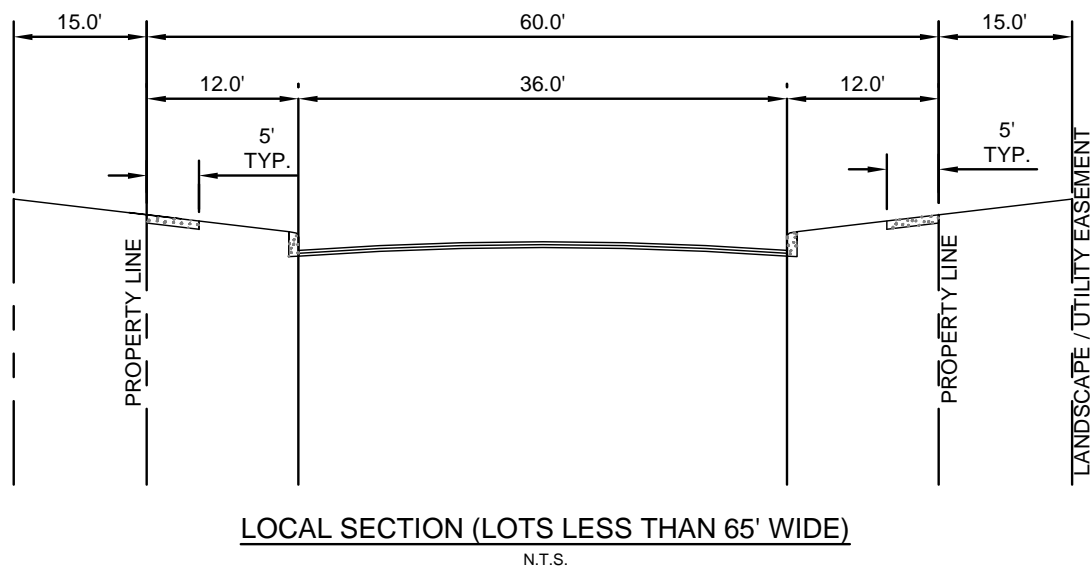
PROPOSED RECYCLED WATER LINE

W

PROPOSED WATER LINE

PROPOSED SANITARY SEWER LINE

PROPOSED SANITARY SEWER FORCE MAIN



- NOTES:
- SPINE ROAD SHALL BE A COLLECTOR / NEIGHBORHOOD ROAD
 - ROADS WITHIN SUBDIVISION POD'S SHALL BE A LOCAL / NEIGHBORHOOD ROAD

THIS POD GENERAL DEVELOPMENT PLAN (GDP) HAS BEEN SUBMITTED TO AND CONSIDERED BY THE PLANNING AND ZONING COMMISSION OF THE CITY OF BOERNE, TEXAS, AND IS HEREBY APPROVED BY SUCH COMMISSION.

DATED THIS ____ DAY OF _____ 2015.

BY: _____
CHAIR

BY: _____
SECRETARY

SUMMARY					
POD	LOT WIDTH	LOT DEPTH	RESIDENTIAL COUNT	ACREAGE	%
I-1	50	125	27	6.17	4.04%
I-2	60	120	36	10.40	6.81%
I-3	70	130	82	27.88	18.26%
I-4	90	147	35	23.38	15.31%
I-5	80	140	22	10.95	7.17%
I-6	140	188	19	17.10	11.20%
I-7A	-	-	-	2.07	1.36%
NATURAL AREA	-	-	-	24.37	15.96%
GREENWAY / STREAM CORRIDOR	-	-	-	11.73	7.68%
SPINE ROAD	-	-	-	18.62	12.20%
TOTAL	-	-	221	152.67	-

POD GENERAL DEVELOPMENT PLAN
(GDP)

TRANSPORTATION NETWORK PLAN & OPEN SPACE SYSTEM PLAN

Esperanza
BOERNE★TEXAS
PHASE 1

Kimley»Horn

601 NW LOOP 410, SUITE 350, SAN ANTONIO, TEXAS 78216
PHONE: 210-541-9166 FAX: 210-541-8699
WWW.KIMLEY-HORN.COM
© 2015 KIMLEY-HORN AND ASSOCIATES, INC.
TBPE Firm No. 928