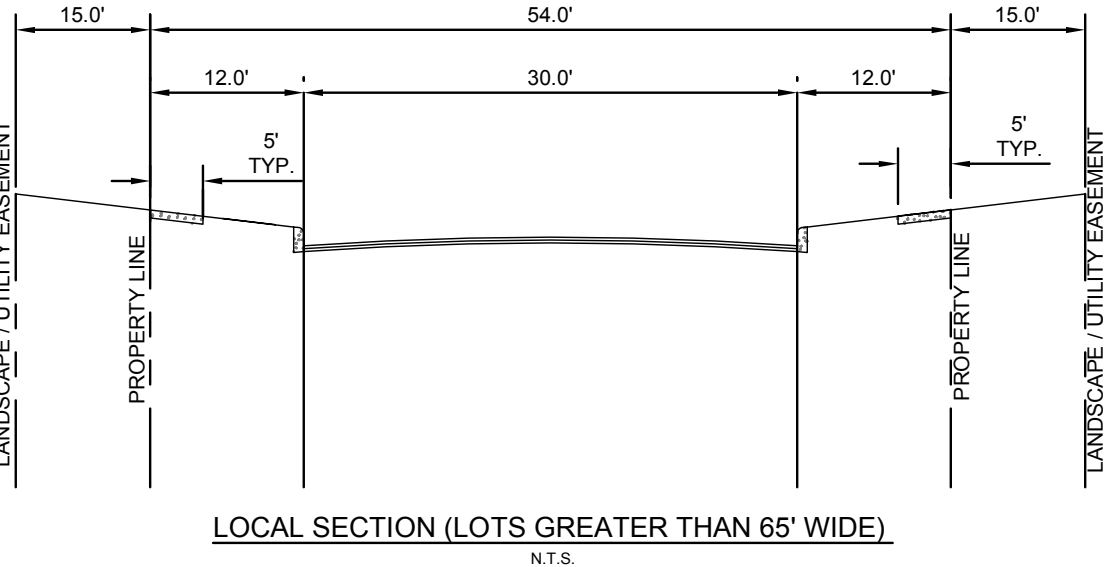
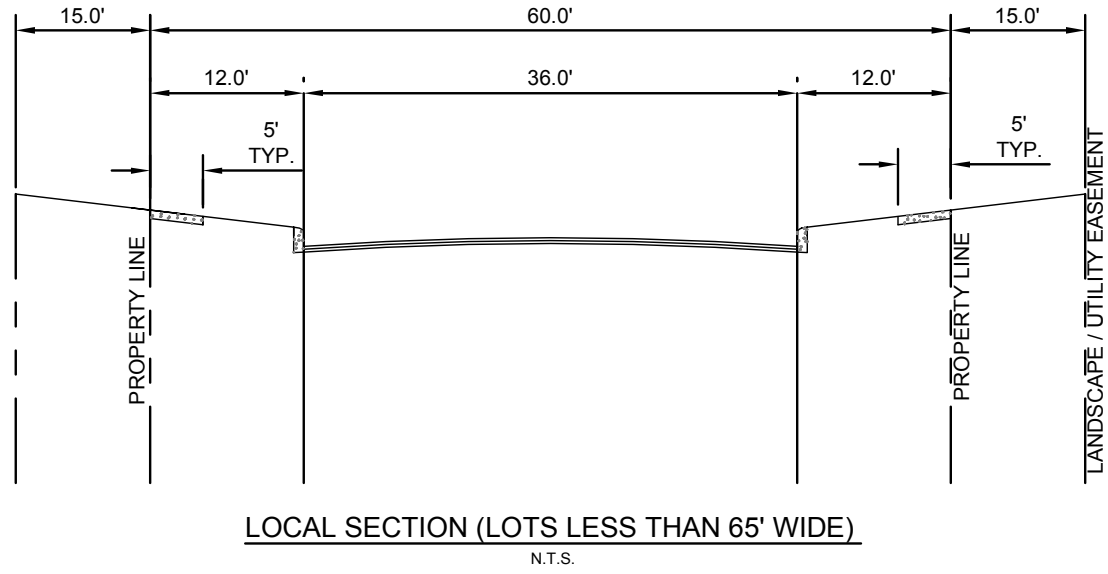


**LEGEND**

- RW PROPOSED RECYCLED WATER LINE
- W PROPOSED WATER LINE
- SS PROPOSED SANITARY SEWER LINE
- SSFM PROPOSED SANITARY SEWER FORCE MAIN



- NOTES:
- SPINE ROAD SHALL BE A COLLECTOR / NEIGHBORHOOD ROAD
  - ROADS WITHIN SUBDIVISION POD'S SHALL BE A LOCAL / NEIGHBORHOOD ROAD

THIS PLAT OF ESPERANZA SUBDIVISION, PHASE 1 HAS BEEN SUBMITTED TO AND CONSIDERED BY THE PLANNING AND ZONING COMMISSION OF THE CITY OF BOERNE, TEXAS, AND IS HEREBY APPROVED BY SUCH COMMISSION.

DATED THIS \_\_\_\_ DAY OF \_\_\_\_\_ 2014.

BY: \_\_\_\_\_  
CHAIR

BY: \_\_\_\_\_  
SECRETARY

SUMMARY					
POD	LOT WIDTH	LOT DEPTH	COUNT	ACREAGE	%
I-1	50	125	27	6.17	4.04%
I-2	60	120	36	10.40	6.81%
I-3	70	130	82	27.88	18.26%
I-4	90	147	35	23.38	15.31%
I-5	90	140	18	8.59	5.63%
I-6	140	188	19	17.10	11.20%
I-7A	-	-	-	2.07	1.36%
NATURAL AREA	-	-	-	26.73	17.51%
GREENWAY / STREAM CORRIDOR	-	-	-	11.73	7.68%
SPINE ROAD	-	-	-	18.62	12.20%
TOTAL	-	-	217	152.67	-

# POD GENERAL DEVELOPMENT PLAN (GDP)

TRANSPORTATION NETWORK PLAN & OPEN SPACE SYSTEM PLAN

*Esperanza*  
BOERNE ★ TEXAS  
PHASE 1

**Kimley-Horn and Associates, Inc.**  
601 NW LOOP 410, SUITE 350, SAN ANTONIO, TEXAS 78216  
PHONE: 210-541-9166 FAX: 210-541-8699  
WWW.KIMLEY-HORN.COM  
© 2014 KIMLEY-HORN AND ASSOCIATES, INC.  
TBPE Firm No. 928