



## SSP

## Square Non-Tapered Steel Poles



### Pole Shaft

The pole shaft is one piece construction, being fabricated from a weldable grade carbon steel structural tubing which has a uniform wall thickness of 11 gauge (0.1196"). The pole shaft material shall conform to ASTM A500 Grade C with a minimum yield strength of 50,000 psi. The pole shaft has a full length longitudinal resistance weld and is uniformly square in cross-section with flat sides, small corner radii and excellent torsional properties.

### Base Plate

The anchor base is fabricated from a structural quality hot rolled carbon steel plate that meets or exceeds a minimum yield strength of 36,000 psi. The anchor base telescopes the pole shaft and is circumferentially welded top and bottom. All welds are performed in accordance with the American Welding Society specification AWS D1.1, latest edition.

**Bolt Circle:** 8.00 (in.) **Dimension :** 8.00 (in.) **Thickness:** 0.75 (in.) **Conduit Opening:** 3"  
 Consult KW representative for non-standard dimensions.

### Anchor Bolts

Anchor bolts are fabricated from commercial quality hot rolled carbon steel bar that meets or exceeds a minimum yield strength of 55,000 psi. Four properly sized anchor bolts, each with two regular hex nuts and washers, are furnished and shipped with all poles unless otherwise specified. Anchor bolts shall have the threaded end galvanized a minimum of 8 inches in accordance with ASTM A153. Fully galvanized anchor bolts are available upon request.

### Handhole

An oval reinforced gasketed handhole, having a nominal 3 " x 5 " inside opening, located 1' - 6" above base, is standard on all poles. A grounding provision is located inside the handhole ring.

### Finish

**Standard** - The exterior surface is cleaned with an alkaline rinse to remove surface contaminants and shot blasted to specifications as published by the Steel Structures Painting Council Standards SSPC-SP10 (near white). The exterior surface is chemically pretreated with an iron phosphate conversion coating then rinsed with ambient fresh water containing special surfactants and sealers forming a dry tight micro-crystalline coating. A polyester thermosetting powder coating applied to the surface of the substrate to a minimum of 3 mils is standard on all color finishes. The internal surface including the powder coated area at the base-end is coated with **RESOL**, a thermoplastic hydrocarbon resin system specially formulated for application over untreated steel surfaces, to a thickness of 3 mils. The internal coating shall contain special corrosion inhibitors and is capable of passing 1000 hours of salt spray exposure (ASTM B117).

Series: **SSP** - Square Non-Tapered Steel Poles

Nominal Height: **10'** Base Diameter: **4.0"** Gauge: **11**

Finish: **BRZ** - Standard - Bronze

Mounting Designation: **DM10** - Drilled for 1 Luminaire

Options: **BC** - Base Cover

Height (ft.)	Pole Shaft (in.) x (ft.)	Gauge	Handhole Size (in.)	Anchor Bolt (in.) x (in.) x (in.)	Bolt Circle (in.)	80 MPH (ft.½ ½)	90 MPH (ft.½ ½)	100 MPH (ft.½ ½)	Ship WT. (lbs.)
10	4.0 x 10.0	11	3 x 5	0.75 x 17 x 3	8	42.1	33.5	27.1	87

**SSP10-4.0-11-BRZ-DM10-BC**

[Print This Page](#)

[Main Menu](#)

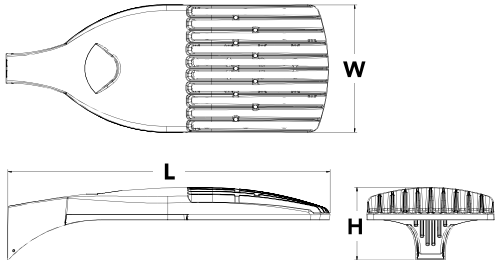


# D-Series Size 1 LED Area Luminaire



## Specifications

<b>EPA:</b>	1.01 ft <sup>2</sup> (0.09 m <sup>2</sup> )
<b>Length:</b>	33" (83.8 cm)
<b>Width:</b>	13" (33.0 cm)
<b>Height:</b>	7-1/2" (19.0 cm)
<b>Weight (max):</b>	27 lbs (12.2 kg)



## Capable Luminaire

This item is an A+ capable luminaire, which has been designed and tested to provide consistent color appearance and system-level interoperability.

- All configurations of this luminaire meet the Acuity Brands' specification for chromatic consistency
- This luminaire is A+ Certified when ordered with DTL® controls marked by a **shaded background**. DTL DLL equipped luminaires meet the A+ specification for luminaire to photocontrol interoperability<sup>1</sup>
- This luminaire is part of an A+ Certified solution for ROAM® or XPoint™ Wireless control networks, providing out-of-the-box control compatibility with simple commissioning, when ordered with drivers and control options marked by a **shaded background**<sup>1</sup>

To learn more about A+, visit [www.acuitybrands.com/aplus](http://www.acuitybrands.com/aplus).

1. See ordering tree for details.
2. A+ Certified Solutions for ROAM require the order of one ROAM node per luminaire. Sold Separately: [Link to Roam](#); [Link to DTL DLL](#)

A+ Capable options indicated by this color background.

## Ordering Information

**EXAMPLE: DSX1 LED P7 40K T3M MVOLT SPA DDBXD**

DSX1LED	P1	30K	T3M	MVOLT	SPA
Series	LEDs	Color temperature	Distribution	Voltage	Mounting
DSX1 LED	<b>Forward optics</b> P1 P4 P7 P2 P5 P8 P3 P6 P9 <b>Rotated optics</b> P10 <sup>1</sup> P12 <sup>1</sup> P11 <sup>1</sup> P13 <sup>1</sup>	30K 3000 K 40K 4000 K 50K 5000 K <b>AMBPC</b> Amber phosphor converted <sup>2</sup>	T1S Type I short T2S Type II short T2M Type II medium T3S Type III short <b>T3M</b> Type III medium T4M Type IV medium TFTM Forward throw medium T5VS Type V very short T5S Type V short T5M Type V medium T5W Type V wide BLC Backlight control <sup>2,3</sup> LCCO Left corner cutoff <sup>2,3</sup> RCCO Right corner cutoff <sup>2,3</sup>	<b>MVOLT</b> 4.5 120 <sup>6</sup> 208 <sup>5,6</sup> 240 <sup>5,6</sup> 277 <sup>6</sup> 347 <sup>5,6,7</sup> 480 <sup>5,6,7</sup>	<b>Shipped included</b> SPA Square pole mounting RPA Round pole mounting WBA Wall bracket SPUMBA Square pole universal mounting adaptor <sup>8</sup> RPUMBA Round pole universal mounting adaptor <sup>8</sup> <b>Shipped separately</b> <b>KMA8 DDBXD U</b> Mast arm mounting bracket adaptor (specify finish) <sup>9</sup>
PIR				HS	DDBXD
<b>Control options</b>				<b>Other options</b>	<b>Finish (required)</b>
<b>Shipped installed</b> NLTAIR2 nLight AIR generation 2 enabled <sup>10</sup> <b>PER</b> NEMA twist-lock receptacle only (controls ordered separate) <sup>11</sup> <b>PERS</b> Five-wire receptacle only (controls ordered separate) <sup>11,12</sup> <b>PER7</b> Seven-wire receptacle only (controls ordered separate) <sup>11,12</sup> DMG 0-10V dimming extend out back of housing for external control (leads exit fixture) DS Dual switching <sup>13,14</sup> <b>PIR</b> Bi-level, motion/ambient sensor, 8-15' mounting height, ambient sensor enabled at 5fc <sup>5,15,16</sup> <b>PIRH</b> Bi-level, motion/ambient sensor, 15-30' mounting height, ambient sensor enabled at 5fc <sup>5,15,16</sup> <b>PIRHN</b> Network, Bi-Level motion/ambient sensor <sup>17</sup> <b>PIR1FC3V</b> Bi-level, motion/ambient sensor, 8-15' mounting height, ambient sensor enabled at 1fc <sup>5,15,16</sup>				<b>Shipped installed</b> <b>HS</b> House-side shield <sup>21</sup> <b>SF</b> Single fuse (120, 277, 347V) <sup>6</sup> <b>DF</b> Double fuse (208, 240, 480V) <sup>6</sup> <b>L90</b> Left rotated optics <sup>1</sup> <b>R90</b> Right rotated optics <sup>1</sup> <b>Shipped separately</b> <b>BS</b> Bird spikes <sup>22</sup> <b>EGS</b> External glare shield <sup>22</sup>	<b>DDBXD</b> Dark bronze <b>DBLXD</b> Black <b>DNAXD</b> Natural aluminum <b>DWHXD</b> White <b>DBBTD</b> Textured dark bronze <b>DBLBD</b> Textured black <b>DNATXD</b> Textured natural aluminum <b>DWHGXD</b> Textured white
<b>PIR1FC3V</b> Bi-level, motion/ambient sensor, 15-30' mounting height, ambient sensor enabled at 1fc <sup>5,15,16</sup> <b>BL30</b> Bi-level switched dimming, 30% <sup>5,14,18</sup> <b>BL50</b> Bi-level switched dimming, 50% <sup>5,14,18</sup> <b>PNNMTDD3</b> Part night, dim till dawn <sup>5,19</sup> <b>PNNMTSD3</b> Part night, dim 5 hrs <sup>5,19</sup> <b>PNNMTG6D3</b> Part night, dim 6 hrs <sup>5,19</sup> <b>PNNMT7D3</b> Part night, dim 7 hrs <sup>5,19</sup> <b>FAO</b> Field adjustable output <sup>20</sup>					

## Ordering Information

### Accessories

Ordered and shipped separately.

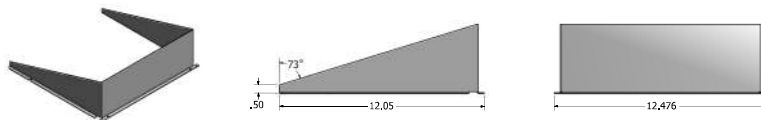
DLL127F 1.5 JU	Photocell- SSL twist-lock (120-277V) <sup>23</sup>
DLL347F 1.5 CUL JU	Photocell- SSL twist-lock (347V) <sup>23</sup>
DLL480F 1.5 CUL JU	Photocell- SSL twist-lock (480V) <sup>23</sup>
DSHORT SBK U	Shorting cap <sup>23</sup>
DSX1HS 30C U	House-side shield for 30 LED unit <sup>21</sup>
DSX1HS 40C U	House-side shield for 40 LED unit <sup>21</sup>
DSX1HS 60C U	House-side shield for 60 LED unit <sup>21</sup>
PUMBA DDBXD U*	Square and round pole universal mounting bracket (specify finish) <sup>24</sup>
KMA8 DDBXD U	Max arm mounting bracket adaptor (specify finish) <sup>24</sup>

For more control options, visit [DTL](#) and [ROAM](#) online.

### NOTES

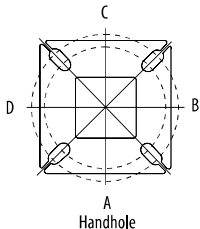
- P10, P11, P12 or P13 and rotated optics (L90, R90) only available together.
- AMBPC is not available with BLC, LCCO, RCCO or P4, P7, P8, P9 or P13.
- Not available with HS.
- MVOLT driver operates on any line voltage from 120-277V (50/60 Hz).
- Any PIRx with BL30, BL50 or PNMT, is not available with 208V, 240V, 347V, 480V or MVOLT. It is only available in 120V or 277V specified.
- Single fuse (SF) requires 120V, 277V or 347V. Double fuse (DF) requires 208V, 240V or 480V.
- Not available in P1 or P10. Not available with BL30, BL50 or PNMT options.
- Existing drilled pole only. Available as a separate combination accessory; for retrofit use only: PUMBA (finish) U; 1.5 G vibration load rating per ANCI C136.31.
- Must order fixture with SPA option. Must be ordered as a separate accessory; see Accessories information. For use with 2-3/8" mast arm (not included).
- Must be ordered with PIR-H.
- Photocell mode required, it must be ordered and shipped as a separate line item from Acuity Brands Controls. See accessories. Not available with DS option. Shorting cap included.
- If ROAM® mode required, it must be ordered and shipped as a separate line item from Acuity Brands Controls. Not available with DCR. Node with integral dimming. Shorting cap included.
- Provides 50/50 fixture operation via (2) independent drivers. Not available with PER, PER5, PER7, PIR or PIRH. Not available P1, P2, P3, P4 or P5.
- Requires (2) separately switched circuits.
- Reference Motion Sensor table on page 3.
- Reference PER table on page 3 to see functionality.
- Must be ordered with NITAIR2. For more information on nLight Air 2 [visit this link](#).
- Not available with 347V, 480V, PNMT, DS. For PER5 or PER7, see PER Table on page 3. Requires isolated neutral.
- Not available with 347V, 480V, DS, BL30, BL50. For PER5 or PER7, see PER Table on page 3. Separate Dusk to Dawn required.
- Not available with other dimming controls options
- Not available with BLC, LCCO and RCCO distribution. Also available as a separate accessory; see Accessories information.
- Must be ordered with fixture for factory pre-drilling.
- Requires luminaire to be specified with PER, PER5 or PER7 option. See PER Table on page 3.
- For retrofit use only.

## External Glare Shield



## Drilling

### HANDHOLE ORIENTATION



### Tenon Mounting Slipfitter\*\*

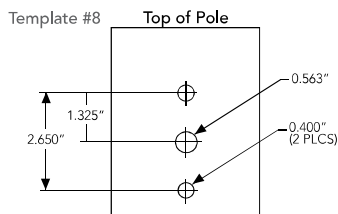
Tenon O.D.	Single Unit	2 at 180°	2 at 90°	3 at 120°	3 at 90°	4 at 90°
2-3/8"	AST20-190	AST20-280	AST20-290	AST20-320	AST20-390	AST20-490
2-7/8"	AST25-190	AST25-280	AST25-290	AST25-320	AST25-390	AST25-490
4"	AST35-190	AST35-280	AST35-290	AST35-320	AST35-390	AST35-490

Pole drilling nomenclature: # of heads at degree from handhole (default side A)					
DM19AS	DM28AS	DM29AS	DM32AS	DM39AS	DM49AS
1 @ 90°	2 @ 280°	2 @ 90°	3 @ 120°	3 @ 90°	4 @ 90°
Side B	Side B & D	Side B & C	Round pole only	Side B, C, & D	Sides A, B, C, D

Note: Review luminaire spec sheet for specific nomenclature

Pole top or tenon O.D.	4.5" @ 90°	4" @ 90°	3.5" @ 90°	3" @ 90°	4.5" @ 120°	4" @ 120°	3.5" @ 120°	3" @ 120°
DSX SPA	Y	Y	Y	N	-	-	-	-
DSX RPA	Y	Y	N	N	Y	Y	Y	Y
DSX SPUMBA	Y	N	N	N	-	-	-	-
DSX RPUMBA	N	N	N	N	Y	Y	Y	N

\*3 fixtures @ 120 require round pole top/tenon.



## Photometric Diagrams

To see complete photometric reports or download .ies files for this product, visit Lithonia Lighting's [D-Series Area Size 1 homepage](#).

Isofootcandle plots for the DSX1 LED 60C 1000 40K. Distances are in units of mounting height (25').

