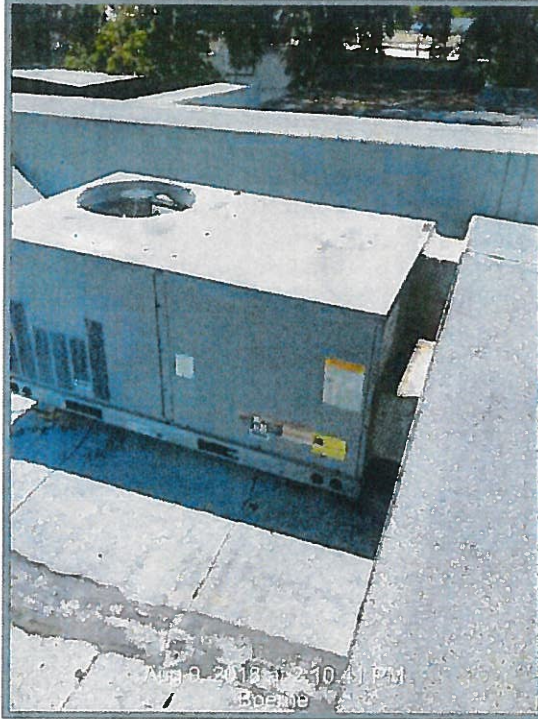


Photograph #35



Overview of rear HVAC system. Visible repairs to this area.

Photograph #36



Rear elevation - tar patches along the building with roofing material.

Photograph #37



Rear elevation - several tar patches and abnormal wear to the roofing material.

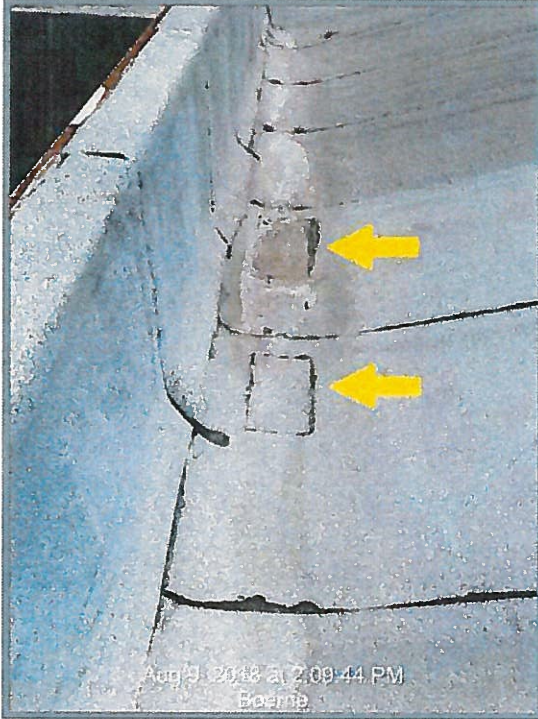
Photograph #38



Overview of rear elevation near the HVAC unit.



Photograph #31



Left elevation - Parapet wall overview with two visible repairs.

Photograph #32



Parapet wall over the window with water damages. Visible fibers of roofing material. This is not storm related.

Gutter Replacement at rear of bldg.

