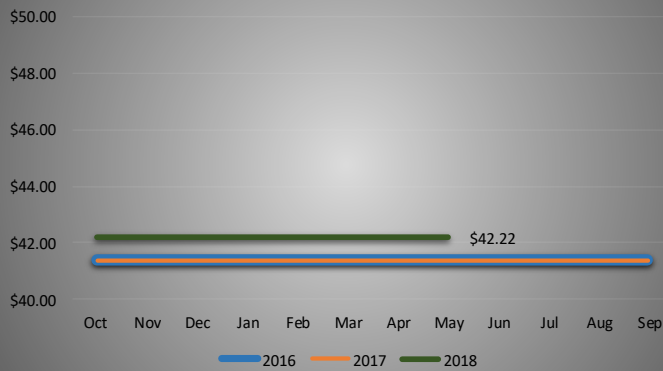
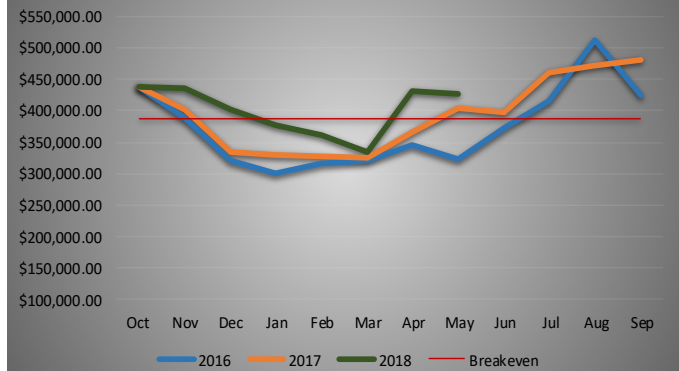


WATER UTILITY DASHBOARD

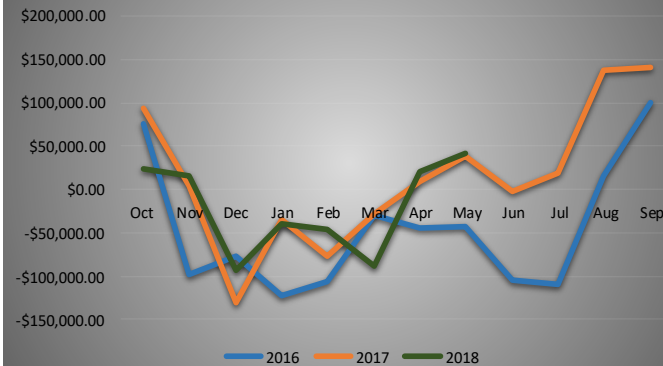
Residential cost per 7,000 gallons



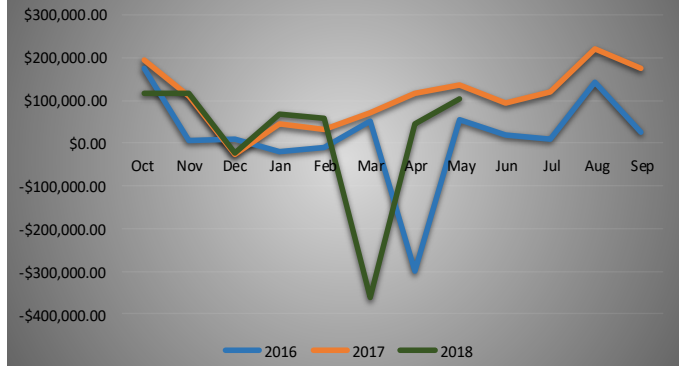
\$ Billed Revenues



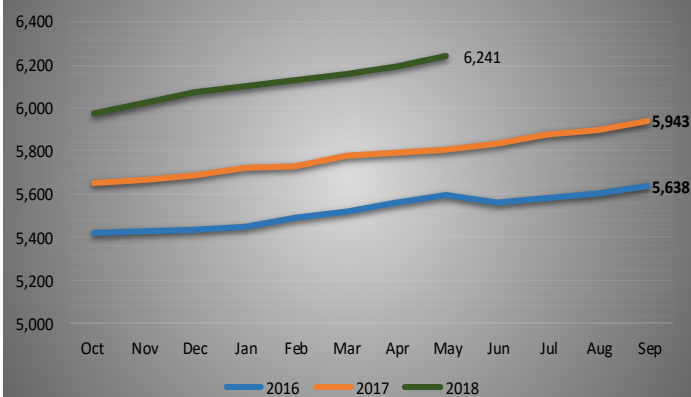
Net income before transfers



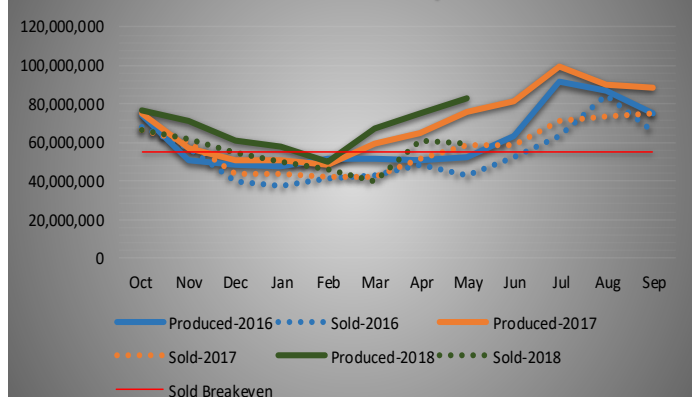
Net Cash Flow



Active Meters



Water Produced/Sold



WATER UTILITY FINANCIALS-ENDING MAY 31ST

	Month	YTD	Budget	% of Budget
Revenue				
UTILITY SALES	435,994	3,254,905	4,971,244	65%
OTHER OPERATING REVENUES	63,408	335,603	342,296	98%
RESTRICTED REVENUES	648	5,461	550	993%
INTEREST	11,011	70,112	30,000	234%
TRANSFERS FROM OTHER FUNDS	27,550	220,400	330,600	67%
Total Revenue	538,611	3,886,481	5,674,690	68%
Expense				
PERSONNEL	116,435	1,023,481	1,690,437	61%
COST OF GOODS / SERVICES SOLD	142,545	1,087,600	1,784,249	61%
SUPPLIES	4,067	26,971	77,050	35%
MAINTENANCE	33,959	141,898	255,700	55%
PROFESSIONAL SERVICES/FEES	0	45,590	47,500	96%
GENERAL EXPENSES	22,856	155,704	214,215	73%
SHARED SERVICES	13,226	105,805	158,708	67%
OTHER CONTRACTS	2,500	7,500	10,000	75%
NON-OPERATING	161,388	1,291,104	1,927,144	67%
Total Expenses	496,975	3,885,653	6,165,003	63%
Net Income (Loss)	41,636	828	(490,313)	
Add:				
DEPRECIATION	114,583	916,667	1,375,000	
TRANSFER FROM CAP RESERVE	-	-	564,900	
Subtract:				
CAPITAL OUTLAY	24,517	331,519	1,131,150	
DEBT SERVICE	27,550	220,400	330,600	
Change in Fund Balance	104,153	365,576	(12,163)	
TRANSFER TO CAP RESERVE	16,667	133,333	200,000	
Change in Unreserved Cash Balance	87,486	232,242	(212,163)	
Cash Balance at 10/1/17	4,398,492			
Minimum Reserve (3 months)	1,197,501			
Unreserved Cash Balance at 10/1/17	3,200,991			
Change in Unreserved Cash	232,242			
Unreserved Cash Balance at 5/31/18	3,433,233			
Capital Reserve Balance	1,958,486			

WATER BUY/SELL SUMMARY	MAY 2018	MAY 2017	2017 to 2018 % CHANGE	12 Month Rolling	Fiscal Year to Date	Calendar Year
GALLONS PRODUCED	83,044,000	76,262,000	8.89%	900,236,000	540,830,000	332,215,000
NET GALLONS WATER SOLD	59,582,400	58,802,400	1.33%	714,930,980	445,518,400	255,694,800
CITY BILLED CONSUMPTION	1,911,500	2,096,100	-8.81%	21,656,720	11,380,900	6,724,900
UNACCOUNTED FOR %	25.51%	19.84%		17.46%	16.21%	20.05%
ACTIVE METERS BILLED (outside CL: 149)	6,241	5,806	7.49%	6,241	6,241	6,241
NET SOLD \$ AMOUNT	\$ 427,342.74	\$ 403,813.85	5.83%	\$ 5,023,578.77	\$ 3,210,205.10	\$ 1,933,284.19
\$ RATIO OF SALES TO PREVIOUS YEAR	105.83%	125.14%		107.94%		
W CONSUMPTION PER CAPITA (Gallons)	\$ 145.00					
RECORD GAL SOLD - August 2016 (\$550,519.58)	89,126,900					
RECORD GAL PRODUCED - July 2017	99,175,000					

WATER PRODUCTION REPORT

MAY 2018

Lake Level

3/31/18

39'7"

All Time Low

30'7" in Nov. 1989

Rain for May

WTP - 3.46"

WWTP - 3.21"

WWTRC - 3.00"

Rain FTD

WTP - 12.64"

WWTP - 14.50"

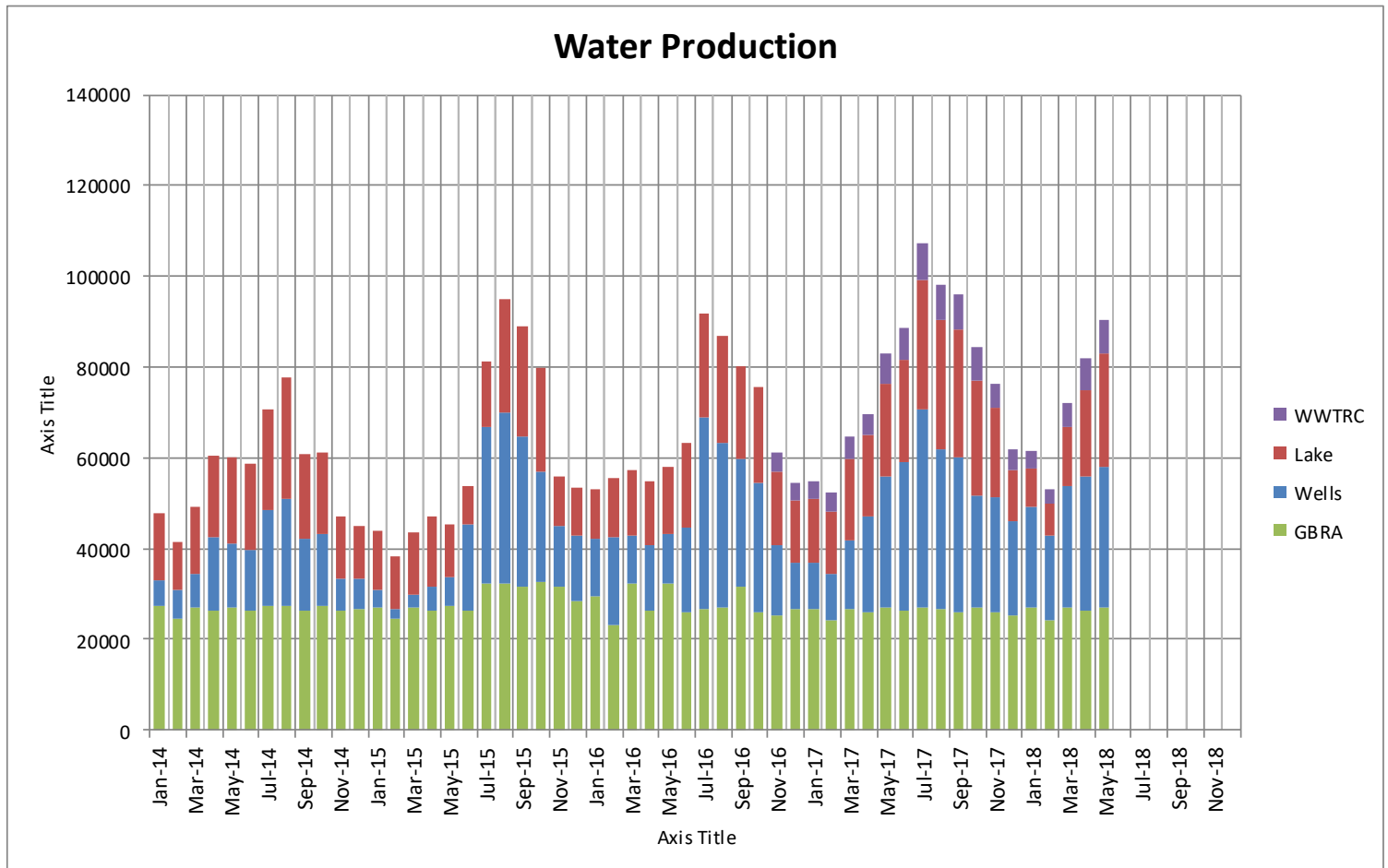
WWTRC - 14.07"

Water Production

Gallons Produced - 83,044,000

Avg Daily Production - 2,679,000

Single Day High - 3,395,000



2018													
Month	Wells	Lake	GBRA	WWTRC Reclaimed	Total	Wells %	Lake %	GBRA %	WWTRC Reclaimed	Ground (Wells)	Surface (Lake+GBRA)	WWTRC Reclaimed	Total
May	31,087	25,061	26,896	7,442	90,486	34.36%	27.70%	29.72%	8.22%	34.36%	57.42%	8.22%	100.00%

Cumulative Totals

Year	Wells	Lake	GBRA	WWTRC Reclaimed	Total	Wells %	Lake %	GBRA %	WWTRC Reclaimed	Ground (Wells)	Surface (Lake+GBRA)	WWTRC Reclaimed	Total
2014	152,769	207,036	320,271		680,076	22.46%	30.44%	47.09%		22.46%	77.54%	0.00%	100.00%
2015	197,028	182,441	346,977		726,446	27.12%	25.11%	47.76%		27.12%	72.88%	0.00%	100.00%
2016	247,213	203,864	332,842	7,993	791,912	31.22%	25.74%	42.03%	1.01%	31.22%	67.77%	1.01%	100.00%
2017	302,686	247,040	314,698	72,695	937,119	32.30%	26.36%	33.58%	7.76%	32.30%	59.94%	7.76%	100.00%
2018	128,115	72,768	131,332	26,738	358,953	35.69%	20.27%	36.59%	7.45%	35.69%	56.86%	7.45%	100.00%

All Totals Are YTD.