

# Sidewalk Project Plan April 2018



City of Boerne  
Community Services Department

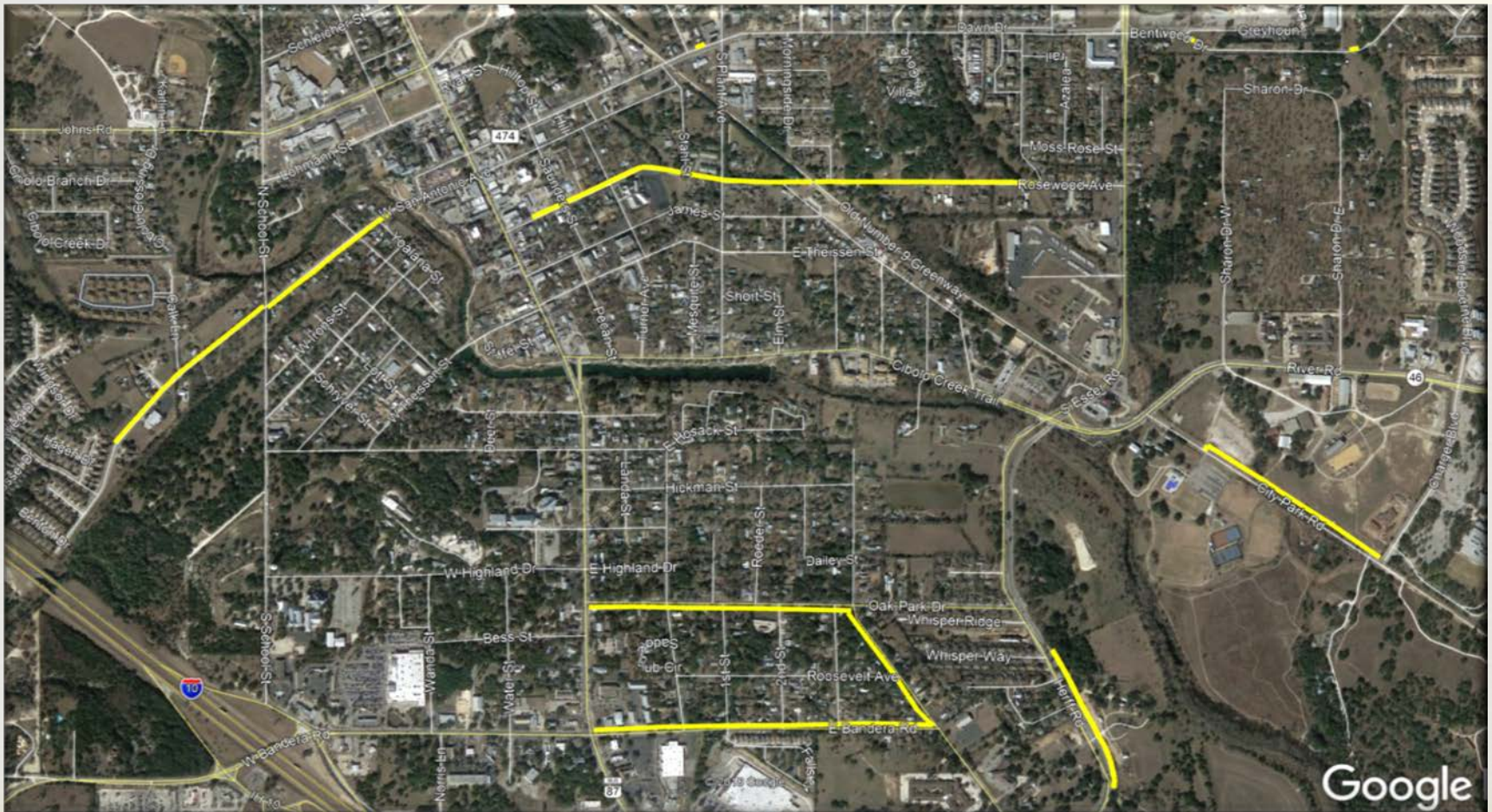


# Potential Sidewalk Projects

**2017/2018  
Budget  
\$430,000**

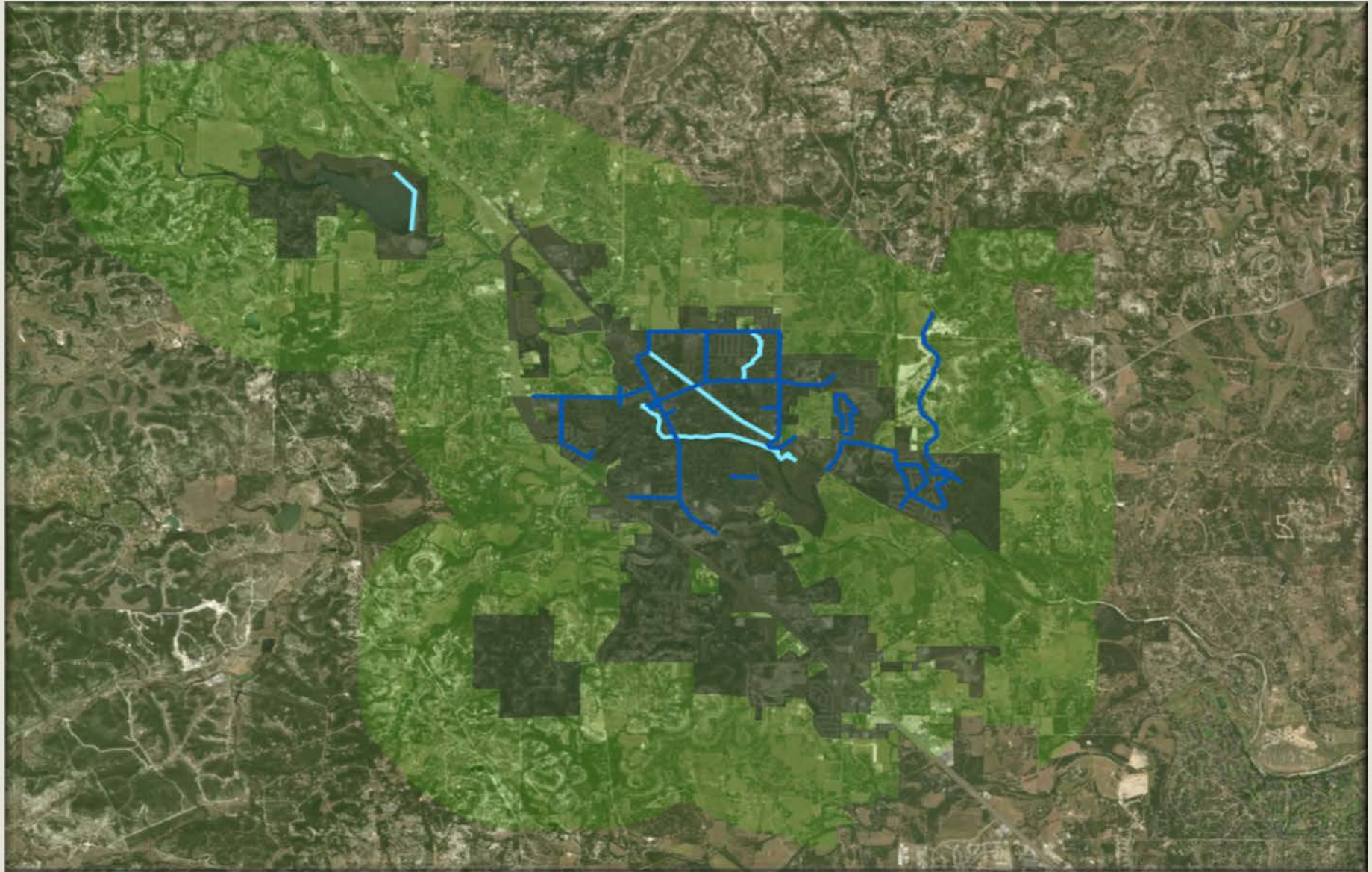
• Bentwood bridge West (75' bridge)	\$100,000
• Bentwood bridge crossing East (75' bridge)	\$100,000
• Rosewood Just NW of Main St to #9 Trail (2,500')	\$125,000
• Rosewood From #9 Trail to Ivey Lane (1,900')	\$95,000
• City Park Rd From Charger Blvd. to City Park (1,900')	\$95,000 + easement cost
• Oak Park from Main St to Frey (2,225')	\$111,250
• Frey from Oak Park to E Bandera ( 1,275')	\$63,750
• E Bandera from Main St to Frey (2,900')	\$145,000
• W San Antonio from the bridge to School St (1,300')	\$65,000 +\$150,000 Rd. Imp.
• W San Antonio from School St to Latimore (1,775')	\$88,750
• E Blanco from Becker to Plant (100')	\$5,000
• Oversizing of Herff Farm Sidewalk from 5' to 8' (1,300')	\$31,200

\*Estimates based on \$10 per sq.' and 5' wide walks



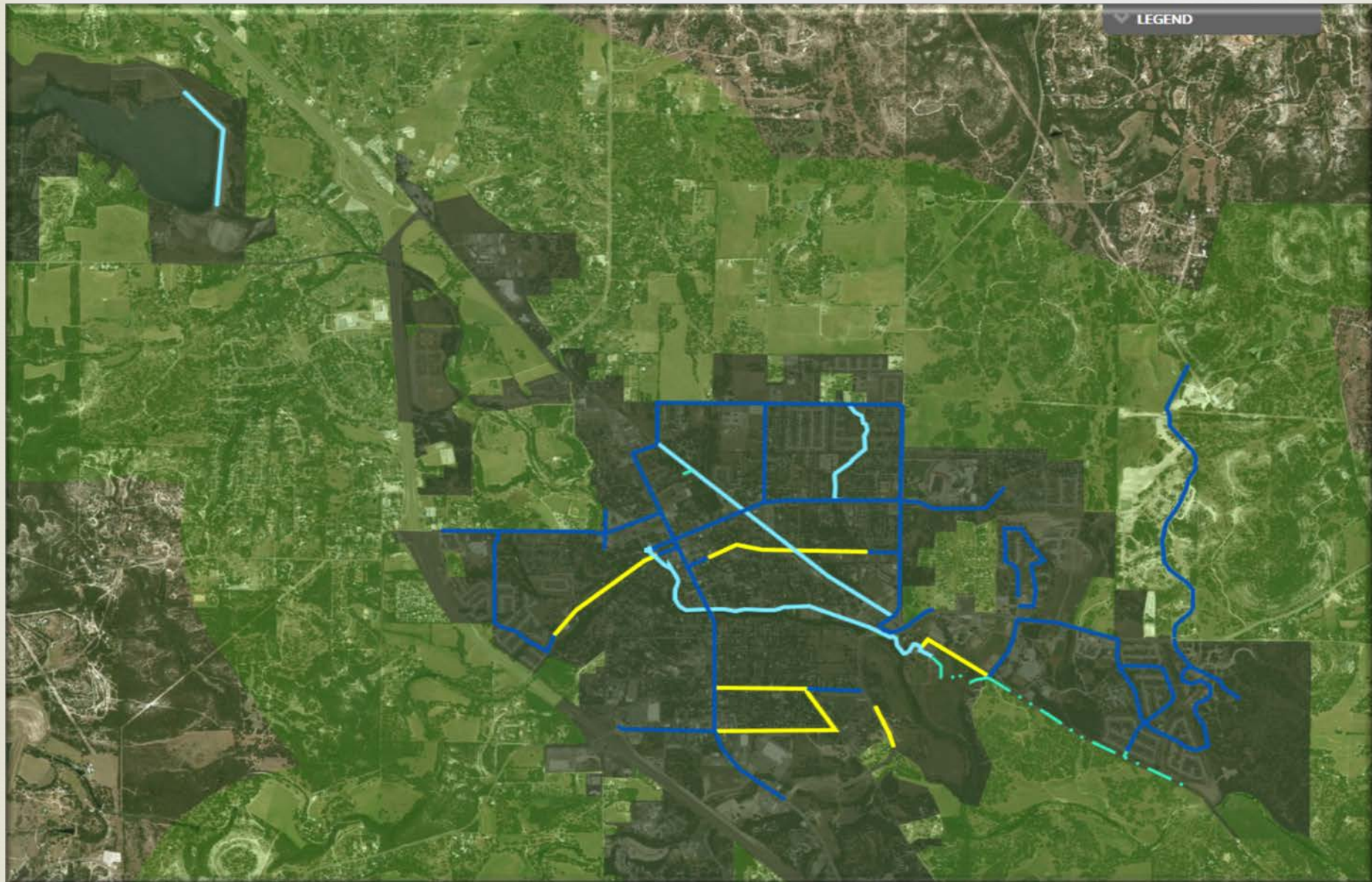


# Existing Trails & Sidewalks



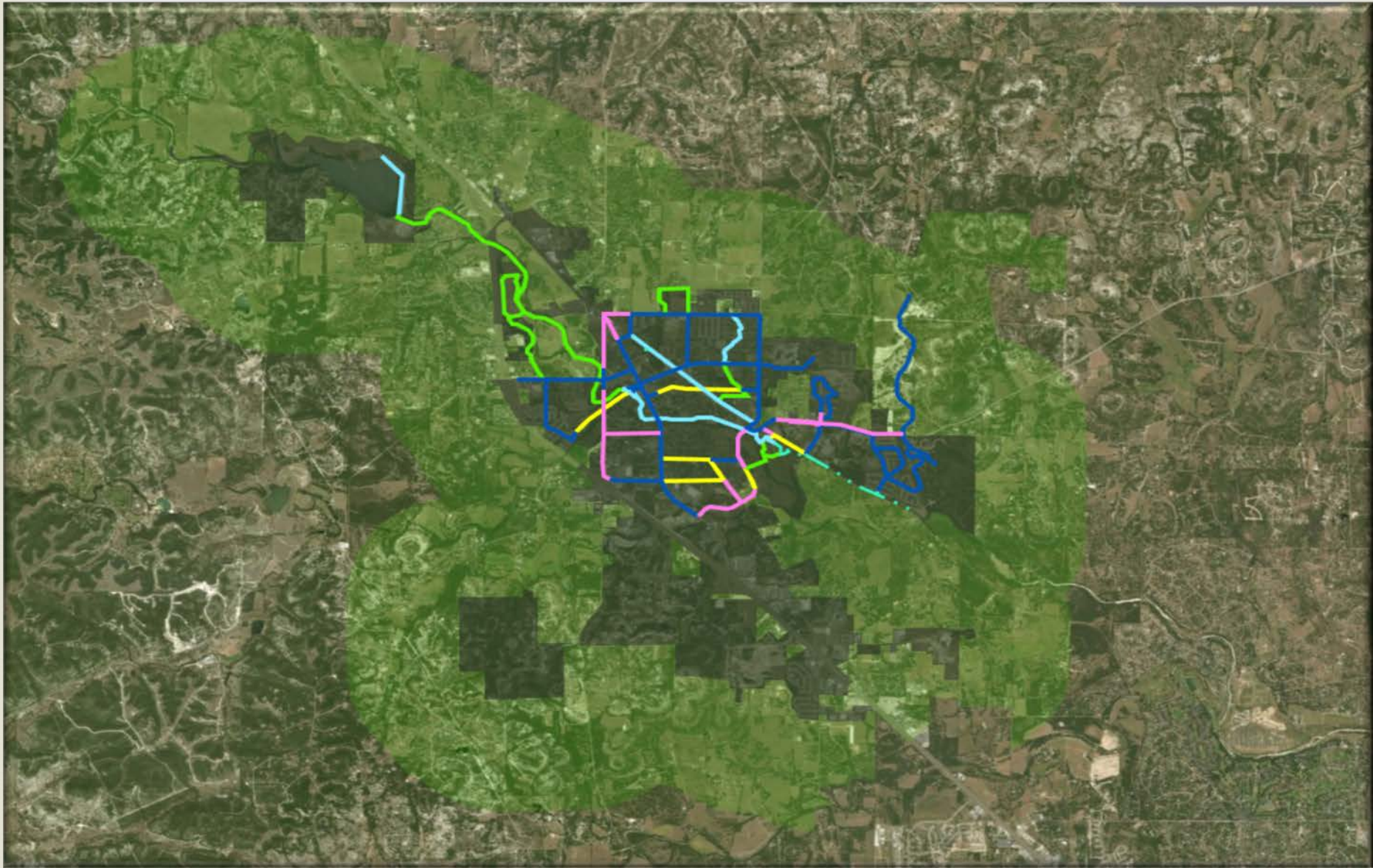


# Proposed Sidewalk Projects





# Potential Future Sidewalks & Trails



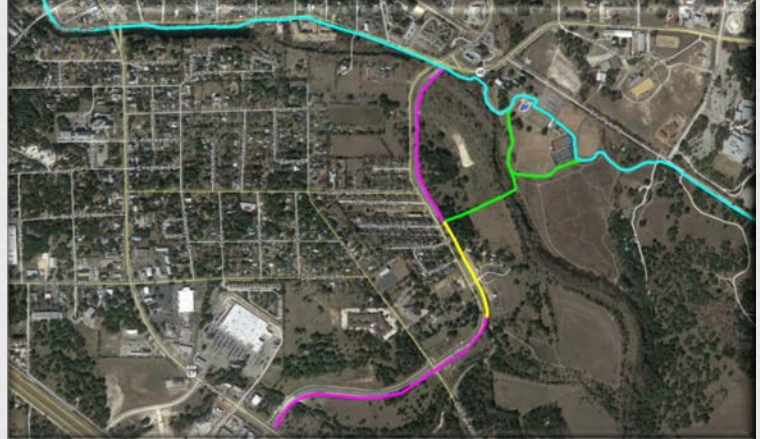


# Sidewalk Projects

## Staff Recommendations

### 2017/2018 Budget Year

• Bentwood bridge West (75' bridge)	\$100,000
• W San Antonio from the bridge to School St (1,300')	\$65,000 +\$150,000 Rd. Imp.
• W San Antonio from School St to Latimore (1,775')	\$88,750
• E Blanco from Becker to Plant (100')	\$5,000
• Oversizing of Herff Farm Sidewalk from 5' to 8' (1,300')	\$31,000
Estimated total	\$439,750





# Sidewalk Projects

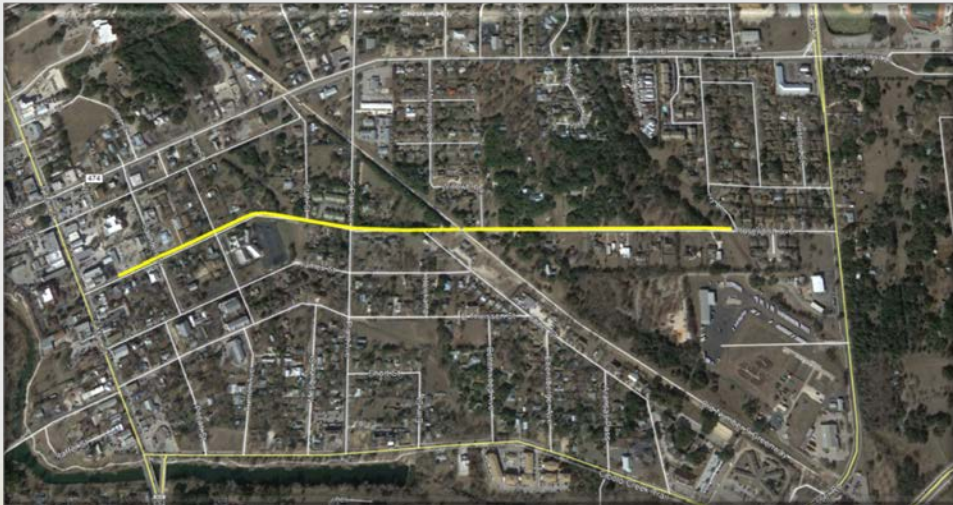
## Staff

### Recommendations

#### 2018/2019 Budget

#### Year

• Bentwood bridge crossing East (75' bridge)	\$100,000
• Rosewood Just NW of Main St to #9 Trail (2,500')	\$125,000
• Rosewood From #9 Trail to Ivey Lane (1,900')	\$95,000
• City Park Rd From Charger Blvd. to City Park (1,900')	\$95,000
<b>Estimated total</b>	<b>\$415,000</b>





# Sidewalk Projects

## Staff

### Recommendations

#### 2019/2020 Budget

#### Year

• Oak Park from Main St to Frey (2,225')	\$111,250
• Frey from Oak Park to E Bandera ( 1,275')	\$63,750
• E Bandera from Main St to Frey (2,900')	\$145,000
<b>Estimated total</b>	<b>\$320,000</b>

