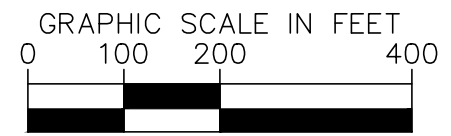
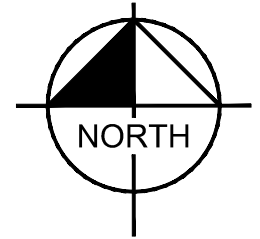


LOCATION MAP
NOT TO SCALE



THE COMMONS AT MENDER CREEK MASTER DEVELOPMENT PLAN

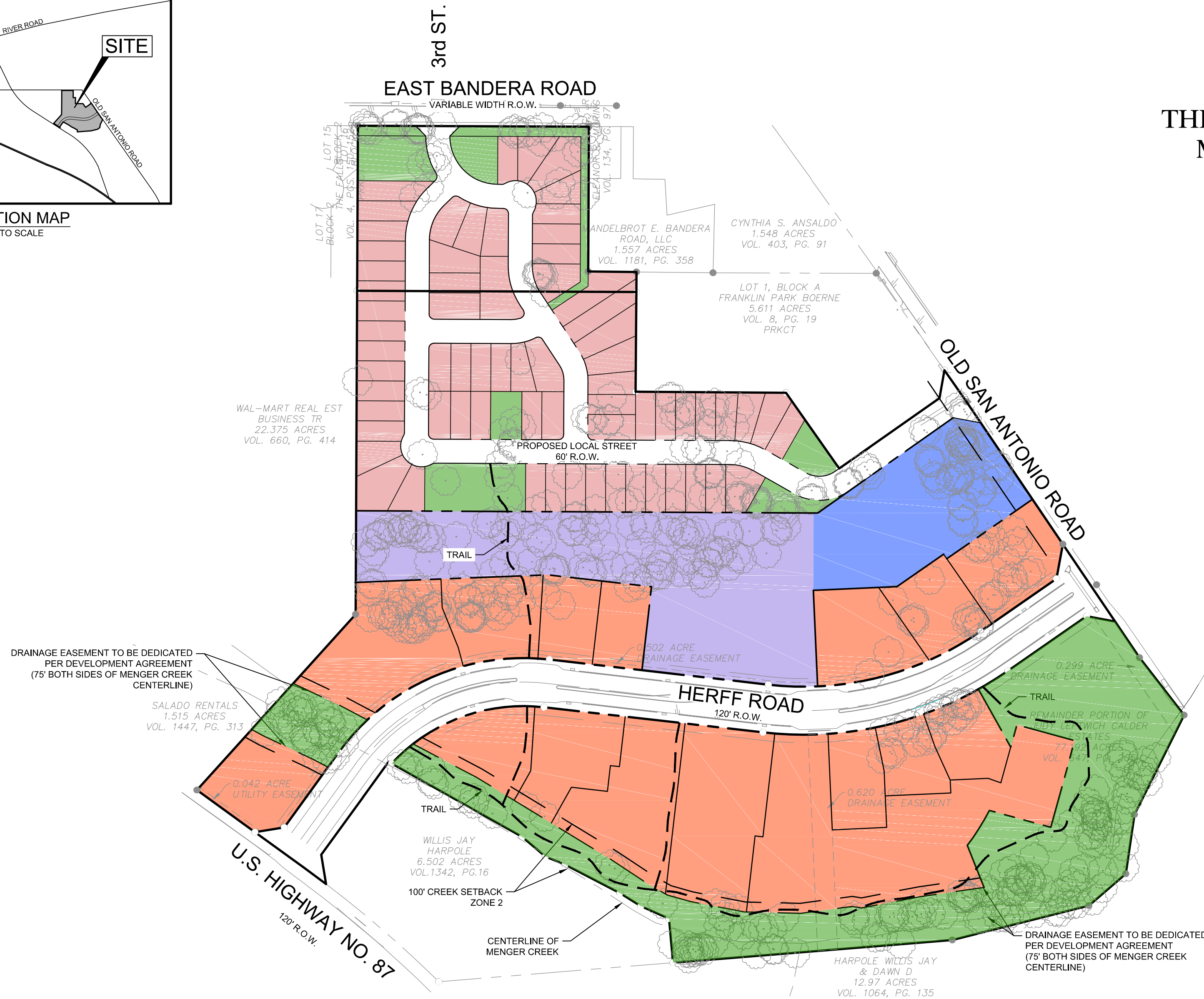
BOERNE ★ TEXAS

FEBRUARY 2017

Kimley»Horn

© 2017 KIMLEY-HORN AND ASSOCIATES, INC.
601 NW LOOP 410, SUITE 350, SAN ANTONIO, TX 78216
PHONE: 210-541-9166 FAX: 210-541-8699
WWW.KIMLEY-HORN.COM
TBPE FIRM NO. 928

LEGEND		
	USE	AREA (ACRES)
	SINGLE FAMILY	10.84
	MULTI-FAMILY	6.86
	MULTI-FAMILY/ RETAIL	3.18
	OFFICE/ RESTAURANT/ RETAIL	21.52
	PARK/ OPEN SPACE	11.69
	PROPOSED RIGHT-OF-WAY	4.97
TOTAL		59.06



THIS MASTER DEVELOPMENT PLAN OF THE COMMONS AT MENDER CREEK HAS BEEN SUBMITTED TO AND CONSIDERED BY THE PLANNING AND ZONING COMMISSION OF THE CITY OF BOERNE, TEXAS, AND IS HEREBY APPROVED BY SUCH COMMISSION.

DATED THIS ____ DAY OF _____, A.D., 20__.

BY: _____
CHAIRMAN

BY: _____
SECRETARY