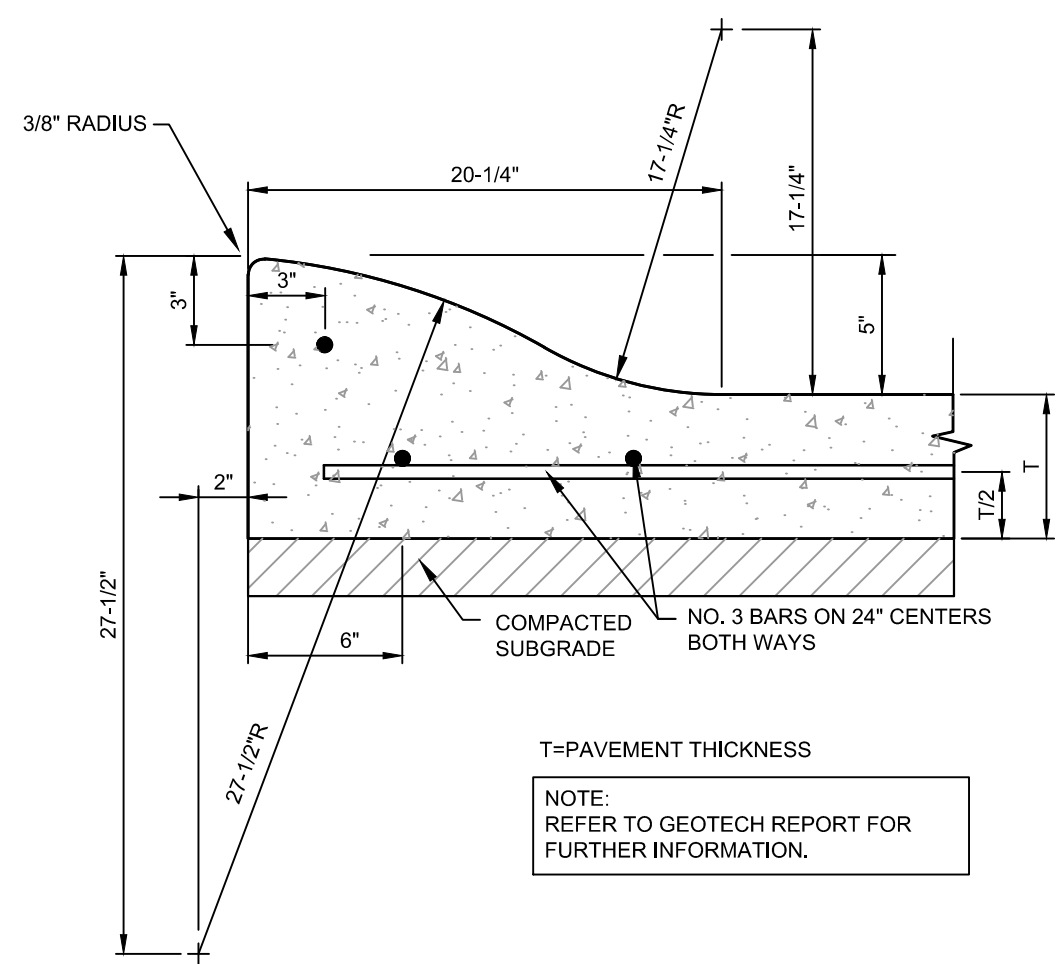
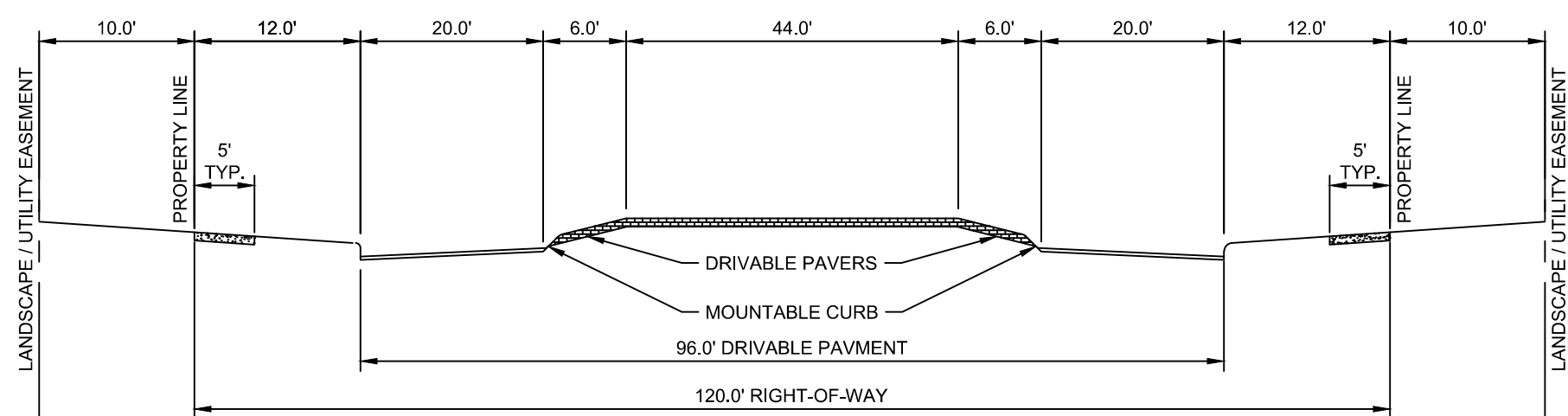
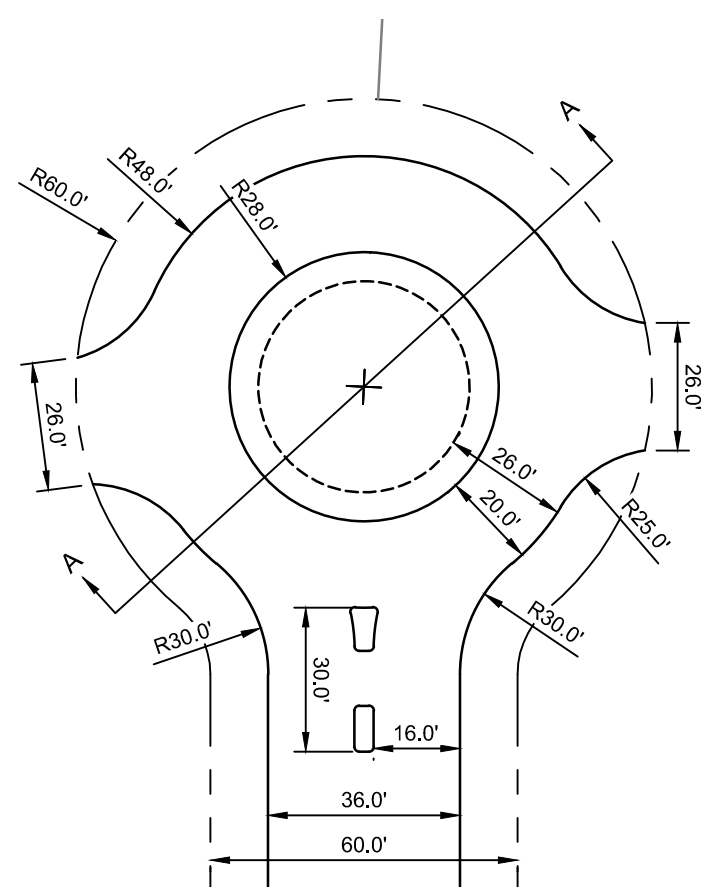
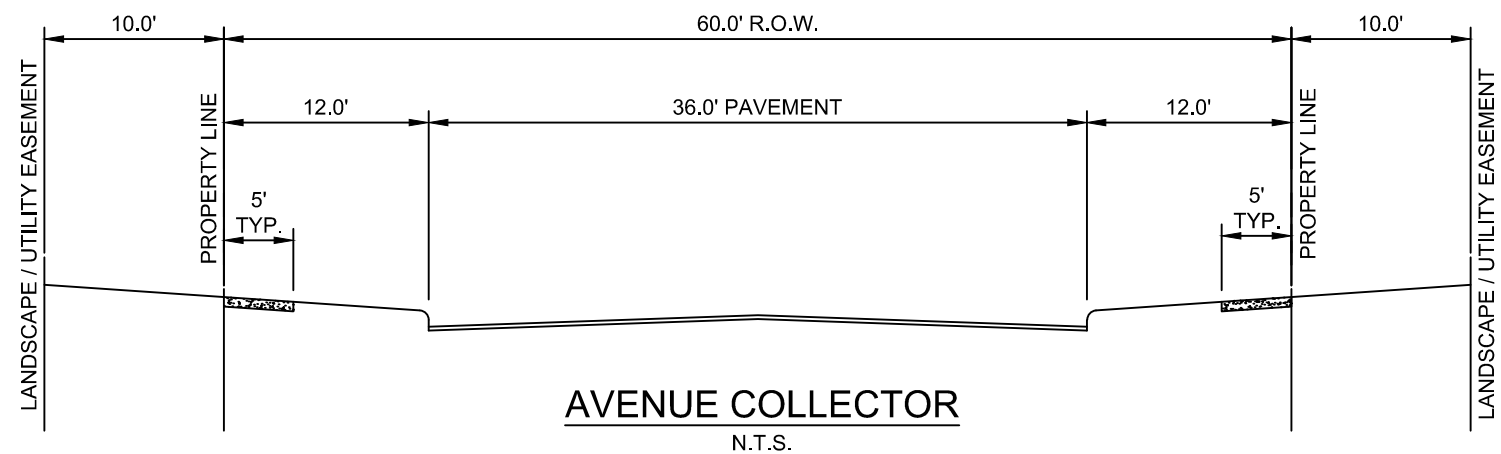
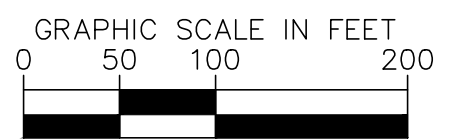
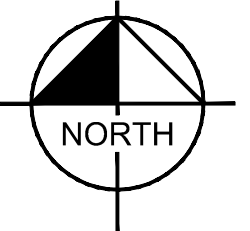
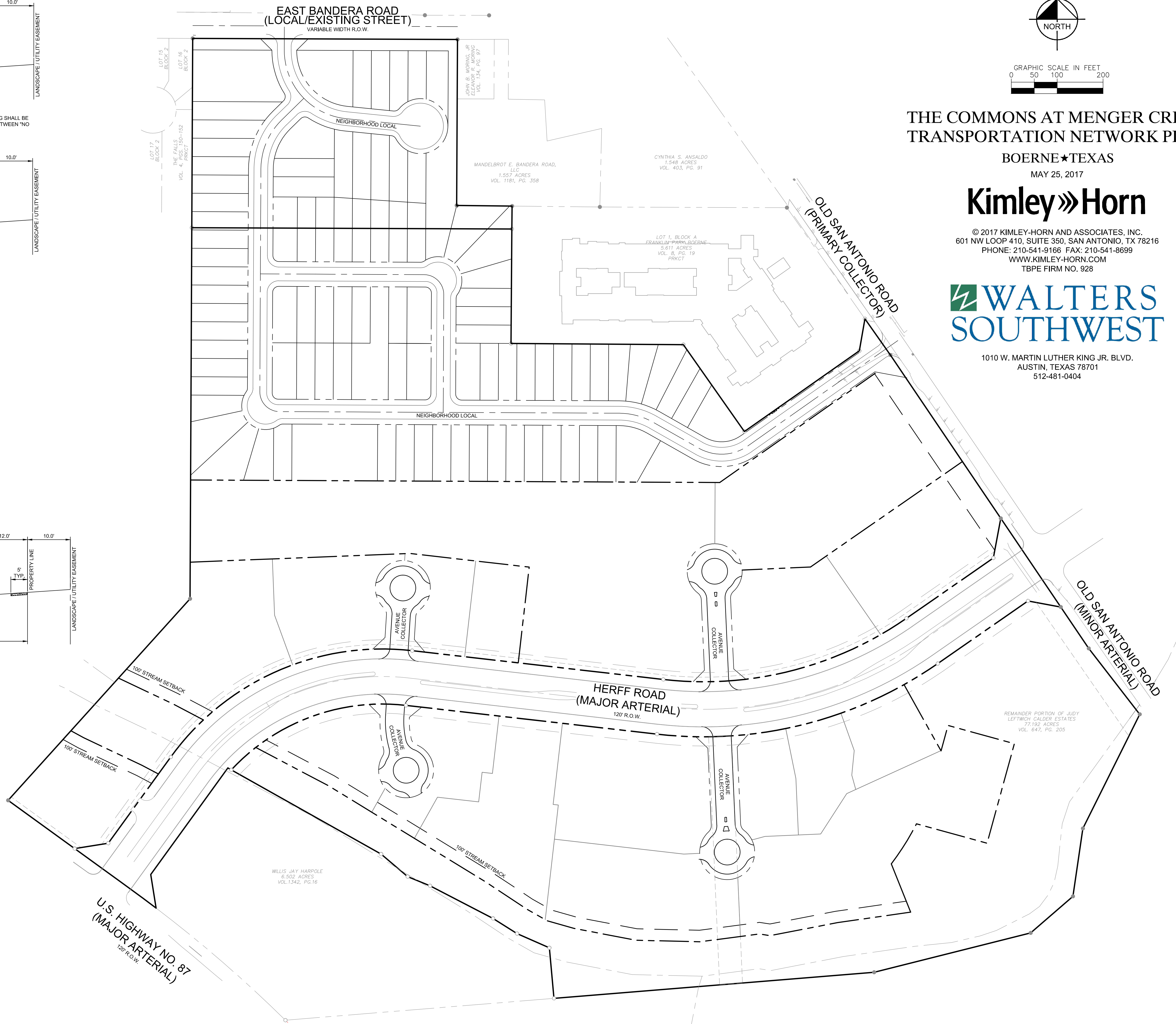


NOTE: FIRE LANE STRIPING SHALL BE 6" RED STRIPES WITH 4" WHITE LETTERS READING "NO PARKING FIRE LANE". STRIPING SHALL BE PLACED FROM THE TOP OF THE SEAM OF THE CURB TO A POINT EVEN WITH THE DRIVING SURFACE. MAXIMUM SPACING BETWEEN "NO PARKING FIRE LANE" SHALL BE 12'.



NOTE: MOUNTABLE CURB TO BE USED FOR ALL ISLANDS LOCATED IN ROUNDBABOUT.



# THE COMMONS AT MENDER CREEK TRANSPORTATION NETWORK PLAN

BOERNE★TEXAS

MAY 25, 2017

## Kimley»Horn

© 2017 KIMLEY-HORN AND ASSOCIATES, INC.  
601 NW LOOP 410, SUITE 350, SAN ANTONIO, TX 78216  
PHONE: 210-541-9166 FAX: 210-541-8699  
WWW.KIMLEY-HORN.COM  
TBPE FIRM NO. 928

## WALTERS SOUTHWEST

1010 W. MARTIN LUTHER KING JR. BLVD.  
AUSTIN, TEXAS 78701  
512-481-0404