



EXISTING IMAGE- NORTH WEST CORNER

DEMOLITION

- A. REMOVE EXISTING TOWER COMPLETE
- B. REMOVE EXISTING CANOPY COMPLETE
- C. REMOVE EXISTING SIGNAGE COMPLETE
- D. REMOVE EXISTING ASPHALT PAVING COMPLETE WHERE NEW CONSTRUCTION OCCURS
- E. REMOVE EXISTING STAIRWAY COMPLETE / COORDINATE WITH NEW CONSTRUCTION OCCURS

NEW CONSTRUCTION

- 1. EXISTING WOOD WINDOW ASSEMBLY / REPLACE ALL DAMAGED GLASS PANELS / RECAULK ALL JOINTS / PAINT ALL WOOD FRAMES COMPLETE
- 2. EXISTING LIMESTONE TO REMAIN / PRESSURE WASH ALL EXPOSED SURFACES
- 3. EXISTING BRICK VENEER TO REMAIN / PRESSURE WASH ALL EXPOSED SURFACES
- 4. EXISTING DOOR ASSEMBLY TO REMAIN / PAINT ALL EXPOSED SURFACES
- 5. EXISTING WOOD WINDOW ASSEMBLY / REPLACE ALL DAMAGED GLASS PANELS / RECAULK ALL JOINTS / PAINT ALL WOOD FRAMES COMPLETE
- 6. EXISTING LIMESTONE TO REMIAN / PRESSURE WASH ALL EXPOSED SURFACES
- 7. EXISTING BRICK VENEER TO REMAIN . PRESSURE WASH ALL EXPOSED SURFACES
- 8. EXISTING DOOR ASSEMBLY TO REMAIN / PAINT ALL EXPOSED SURFACES

ATTACHMENT 1



EXISTING IMAGE- NORTH WEST CORNER

DEMOLITION

- A. REMOVE EXISTING TOWER COMPLETE
- B. REMOVE EXISTING CANOPY COMPLETE
- C. REMOVE EXISTING SIGNAGE COMPLETE
- D. REMOVE EXISTING ASPHALT PAVING COMPLETE WHERE NEW CONSTRUCTION OCCURS
- E. REMOVE EXISTING STAIRWAY COMPLETE / COORDINATE WITH NEW CONSTRUCTION OCCURS

NEW CONSTRUCTION

- 1. EXISTING WOOD WINDOW ASSEMBLY / REPLACE ALL DAMAGED GLASS PANELS / RECAULK ALL JOINTS / PAINT ALL WOOD FRAMES COMPLETE
- 2. EXISTING LIMESTONE TO REMAIN / PRESSURE WASH ALL EXPOSED SURFACES
- 3. EXISTING BRICK VENEER TO REMAIN / PRESSURE WASH ALL EXPOSED SURFACES
- 4. EXISTING DOOR ASSEMBLY TO REMAIN / PAINT ALL EXPOSED SURFACES
- 5. EXISTING WOOD WINDOW ASSEMBLY / REPLACE ALL DAMAGED GLASS PANELS / RECAULK ALL JOINTS / PAINT ALL WOOD FRAMES COMPLETE
- 6. EXISTING LIMESTONE TO REMIAN / PRESSURE WASH ALL EXPOSED SURFACES
- 7. EXISTING BRICK VENEER TO REMAIN . PRESSURE WASH ALL EXPOSED SURFACES
- 8. EXISTING DOOR ASSEMBLY TO REMAIN / PAINT ALL EXPOSED SURFACES

ATTACHMENT 2



EXISTING IMAGE- NORTH ELEVATION

DEMOLITION

- A. REMOVE EXISTING TOWER COMPLETE
- B. REMOVE EXISTING CANOPY COMPLETE
- C. REMOVE EXISTING SIGNAGE COMPLETE
- D. REMOVE EXISTING ASPHALT PAVING COMPLETE WHERE NEW CONSTRUCTION OCCURS
- E. REMOVE EXISTING STAIRWAY COMPLETE / COORDINATE WITH NEW CONSTRUCTION OCCURS

NEW CONSTRUCTION

- 1. EXISTING WOOD WINDOW ASSEMBLY / REPLACE ALL DAMAGED GLASS PANELS / RECAULK ALL JOINTS / PAINT ALL WOOD FRAMES COMPLETE
- 2. EXISTING LIMESTONE TO REMAIN / PRESSURE WASH ALL EXPOSED SURFACES
- 3. EXISTING BRICK VENEER TO REMAIN / PRESSURE WASH ALL EXPOSED SURFACES
- 4. EXISTING DOOR ASSEMBLY TO REMAIN / PAINT ALL EXPOSED SURFACES
- 5. EXISTING WOOD WINDOW ASSEMBLY / REPLACE ALL DAMAGED GLASS PANELS / RECAULK ALL JOINTS / PAINT ALL WOOD FRAMES COMPLETE
- 6. EXISTING LIMESTONE TO REMIAN / PRESSURE WASH ALL EXPOSED SURFACES
- 7. EXISTING BRICK VENEER TO REMAIN . PRESSURE WASH ALL EXPOSED SURFACES
- 8. EXISTING DOOR ASSEMBLY TO REMAIN / PAINT ALL EXPOSED SURFACES

ATTACHMENT 3



EXISTING IMAGE- SOUTH EAST CORNER

DEMOLITION

- A. REMOVE EXISTING TOWER
COMPLETE
- B. REMOVE EXISTING CANOPY
COMPLETE
- C. REMOVE EXISTING SIGNAGE
COMPLETE
- D. REMOVE EXISTING ASPHALT
PAVING COMPLETE WHERE
NEW CONSTRUCTION OCCURS
- E. REMOVE EXISTING STAIRWAY
COMPLETE / COORDINATE WITH
NEW CONSTRUCTION OCCURS

NEW CONSTRUCTION

- 1. EXISTING WOOD WINDOW ASSEMBLY /
REPLACE ALL DAMAGED GLASS PANELS /
RECAULK ALL JOINTS / PAINT ALL WOOD
FRAMES COMPLETE
- 2. EXISTING LIMESTONE TO REMAIN /
PRESSURE WASH ALL EXPOSED SURFACES
- 3. EXISTING BRICK VENEER TO REMAIN /
PRESSURE WASH ALL EXPOSED SURFACES
- 4. EXISTING DOOR ASSEMBLY TO REMAIN /
PAINT ALL EXPOSED SURFACES
- 5. EXISTING WOOD WINDOW ASSEMBLY /
REPLACE ALL DAMAGED GLASS PANELS /
RECAULK ALL JOINTS / PAINT ALL WOOD
FRAMES COMPLETE
- 6. EXISTING LIMESTONE TO REMIAN /
PRESSURE WASH ALL EXPOSED SURFACES
- 7. EXISTING BRICK VENEER TO REMAIN .
PRESSURE WASH ALL EXPOSED SURFACES
- 8. EXISTING DOOR ASSEMBLY TO REMAIN /
PAINT ALL EXPOSED SURFACES

ATTACHMENT 4

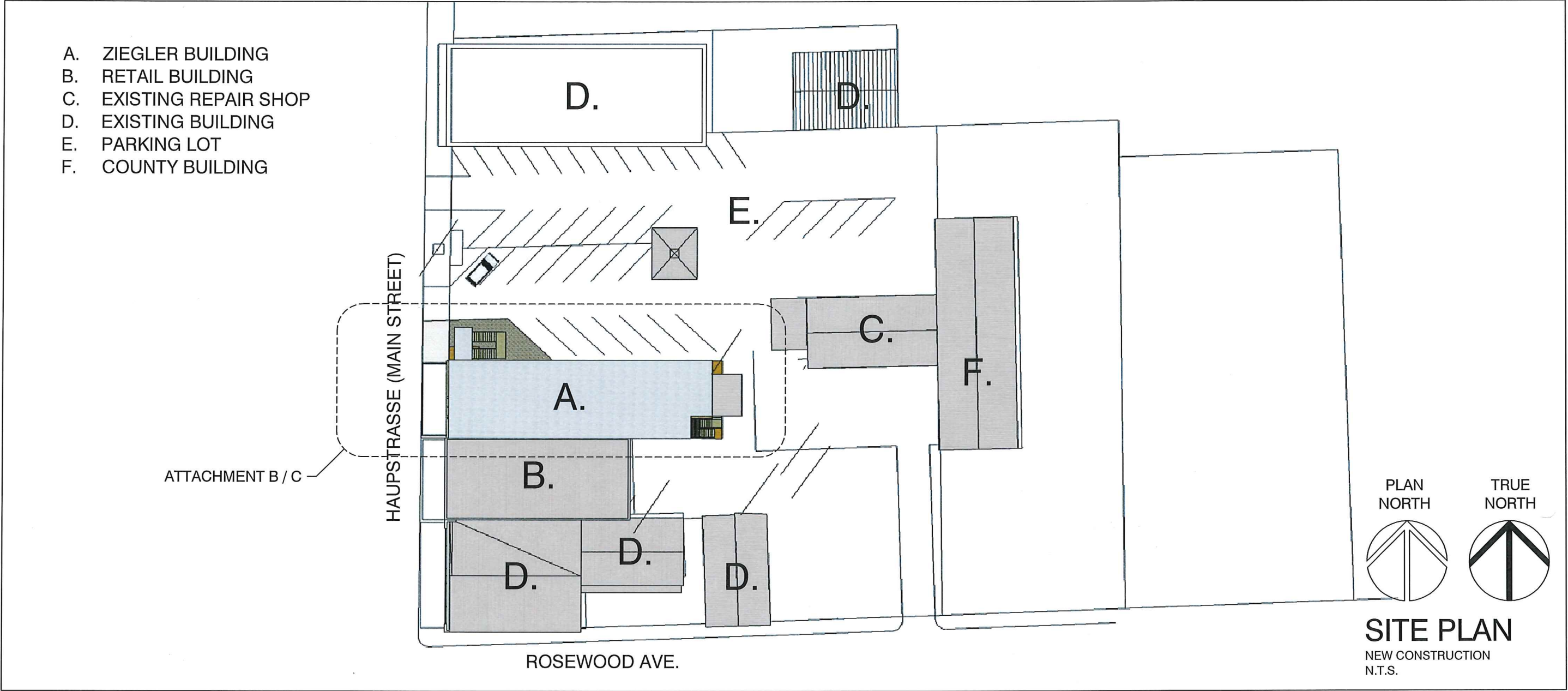


2016.09.23| HISTORICAL REVIEW SUBMISSION

ZIEGLER BUILDING DEVELOPMENT
COLORADO RIVER PROPERTIES, LLC.
Boerne, Texas

745 E. Mulberry Avenue, Suite 601
San Antonio, Texas 78212
Office: 210.733.3535
www.rvk-architects.com
Registered Architect: George P. Vaughn, 5833

RVK designs and delivers
exceptional solutions that
positively **impact** the daily lives
of **people** and their environment



PROPOSED MASTER PLAN

ATTACHMENT A

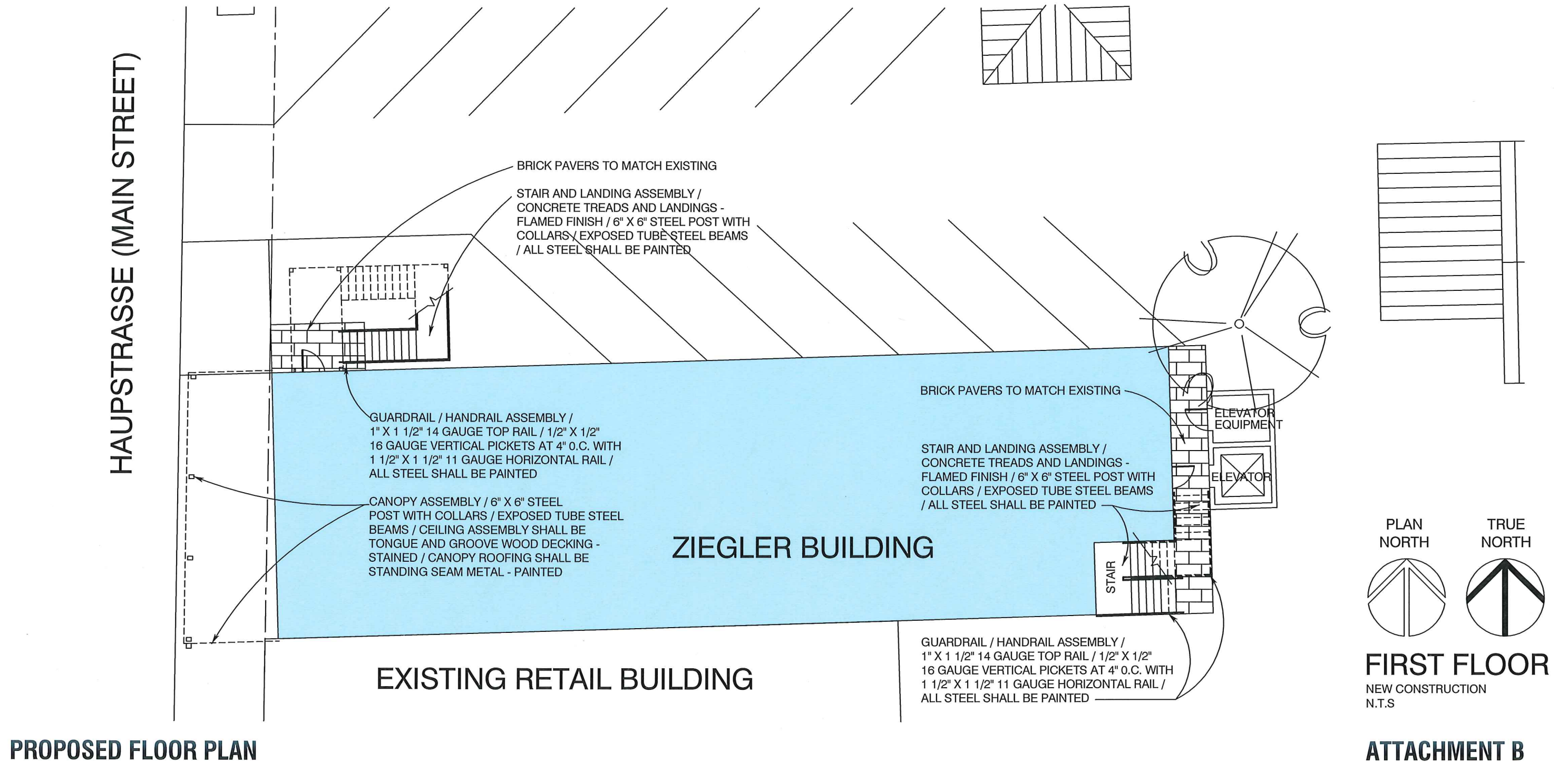


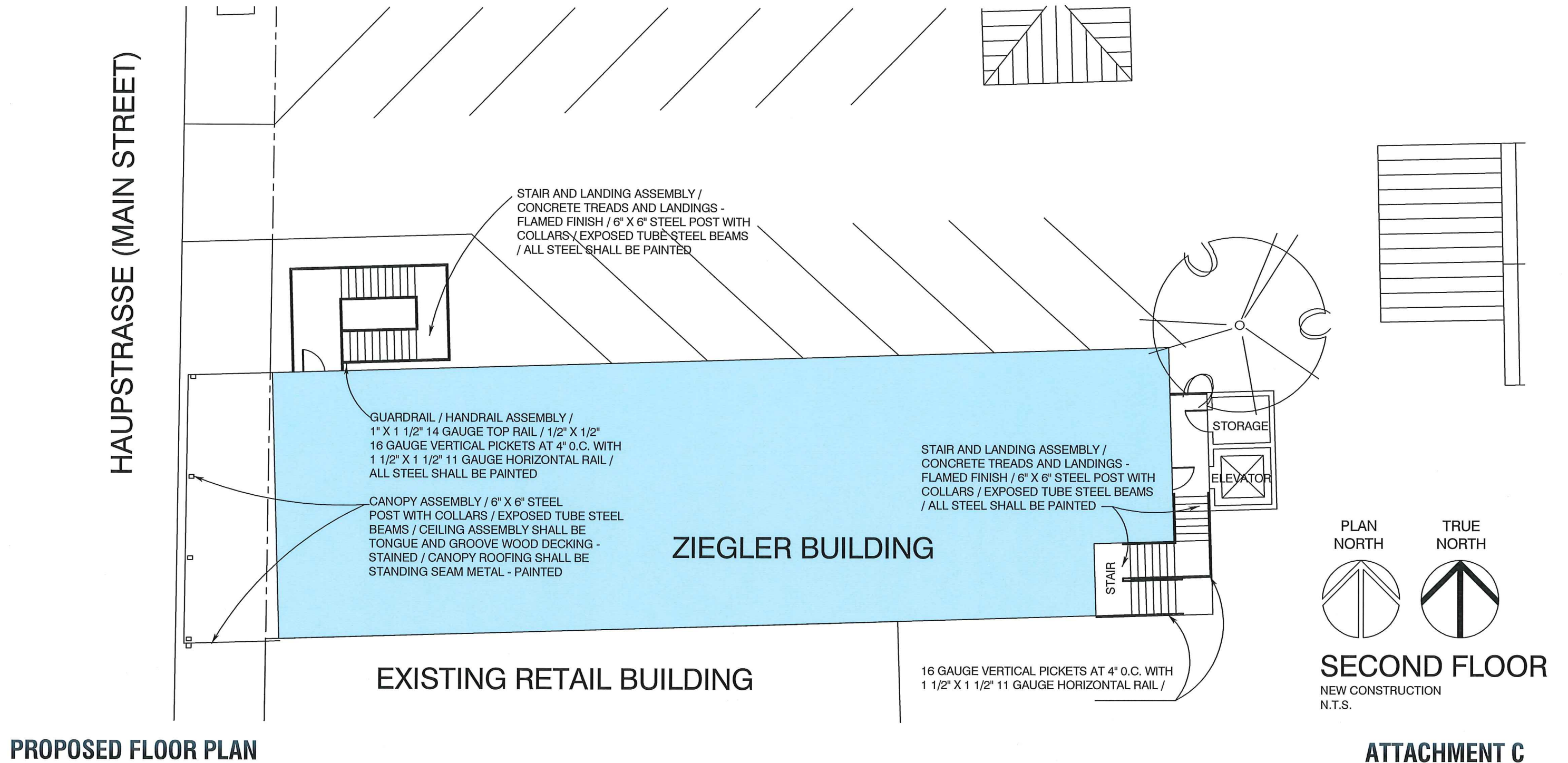
2016.09.23 | HISTORICAL REVIEW SUBMISSION

ZIEGLER BUILDING DEVELOPMENT
COLORADO RIVER PROPERTIES, LLC.
Boerne, Texas

745 E. Mulberry Avenue, Suite 601
San Antonio, Texas 78212
Office: 210.733.3535
www.rvk-architects.com
Registered Architect: George P. Vaughn, 5833

RVK **designs** and delivers
exceptional solutions that
positively **impact** the daily lives
of **people** and their environments.







NEW CONSTRUCTION

1. EXISTING WOOD WINDOW ASSEMBLY / REPLACE ALL DAMAGED GLASS PANELS / RECAULK ALL JOINTS / PAINT ALL WOOD FRAMES COMPLETE
2. EXISTING LIMESTONE TO REMAIN / PRESSURE WASH ALL EXPOSED SURFACES
3. EXISTING BRICK VENEER TO REMAIN / PRESSURE WASH ALL EXPOSED SURFACES
4. EXISTING DOOR ASSEMBLY TO REMAIN / PAINT ALL EXPOSED SURFACES
5. EXISTING WOOD WINDOW ASSEMBLY / REPLACE ALL DAMAGED GLASS PANELS / RECAULK ALL JOINTS / PAINT ALL WOOD FRAMES COMPLETE
6. EXISTING LIMESTONE TO REMIAN / PRESSURE WASH ALL EXPOSED SURFACES
7. EXISTING BRICK VENEER TO REMAIN . PRESSURE WASH ALL EXPOSED SURFACES
8. EXISTING DOOR ASSEMBLY TO REMAIN / PAINT ALL EXPOSED SURFACES
9. STANDING SEAM METAL ROOFING SYSTEM / PRE-FINISHED
10. CORRIGATED "S" DECK METAL WALL PANEL (BARN TIN) / GALVANIZED FINISH
11. WOOD FASCIA TRIM / PAINT
12. STAIR AND LANDING ASSEMBLY / CONCRETE TREADS AND LANDINGS - FLAMED FINISH / 6" X 6" STEEL POST WITH COLLARS / EXPOSED TUBE STEEL BEAMS / ALL STEEL SHALL BE PAINTED
13. GUARDRAIL / HANDRAIL ASSEMBLY / 1" X 1 1/2" 14 GAUGE TOP RAIL / 1/2" X 1/2" 16 GAUGE VERTICAL PICKETS AT 4" O.C. WITH 1 1/2" X 1 1/2" 11 GAUGE HORIZONTAL RAIL / ALL STEEL SHALL BE PAINTED

NORTHWEST VIEW OFF MAIN STREET

ATTACHMENT D



2016.09.23 | HISTORICAL REVIEW SUBMISSION

ZIEGLER BUILDING DEVELOPMENT
COLORADO RIVER PROPERTIES, LLC.
Boerne, Texas

745 E. Mulberry Avenue, Suite 601
San Antonio, Texas 78212
Office: 210.733.3535
www.rvk-architects.com
Registered Architect: George P. Vaughn, 5833

RVK **designs** and delivers
exceptional solutions that
positively **impact** the daily lives
of **people** and their environments.



NEW CONSTRUCTION

1. EXISTING WOOD WINDOW ASSEMBLY / REPLACE ALL DAMAGED GLASS PANELS / RECAULK ALL JOINTS / PAINT ALL WOOD FRAMES COMPLETE
2. EXISTING LIMESTONE TO REMAIN / PRESSURE WASH ALL EXPOSED SURFACES
3. EXISTING BRICK VENEER TO REMAIN / PRESSURE WASH ALL EXPOSED SURFACES
4. EXISTING DOOR ASSEMBLY TO REMAIN / PAINT ALL EXPOSED SURFACES
5. EXISTING WOOD WINDOW ASSEMBLY / REPLACE ALL DAMAGED GLASS PANELS / RECAULK ALL JOINTS / PAINT ALL WOOD FRAMES COMPLETE
6. EXISTING LIMESTONE TO REMIAN / PRESSURE WASH ALL EXPOSED SURFACES
7. EXISTING BRICK VENEER TO REMAIN . PRESSURE WASH ALL EXPOSED SURFACES
8. EXISTING DOOR ASSEMBLY TO REMAIN / PAINT ALL EXPOSED SURFACES
9. STANDING SEAM METAL ROOFING SYSTEM / PRE-FINISHED
10. CORRIGATED "S" DECK METAL WALL PANEL (BARN TIN) / GALVANIZED FINISH
11. WOOD FASCIA TRIM / PAINT
12. STAIR AND LANDING ASSEMBLY / CONCRETE TREADS AND LANDINGS - FLAMED FINISH / 6" X 6" STEEL POST WITH COLLARS / EXPOSED TUBE STEEL BEAMS / ALL STEEL SHALL BE PAINTED
13. GUARDRAIL / HANDRAIL ASSEMBLY / 1" X 1 1/2" 14 GAUGE TOP RAIL / 1/2" X 1/2" 16 GAUGE VERTICAL PICKETS AT 4" O.C. WITH 1 1/2" X 1 1/2" 11 GAUGE HORIZONTAL RAIL / ALL STEEL SHALL BE PAINTED

NORTHWEST VIEW OFF MAIN STREET

ATTACHMENT E



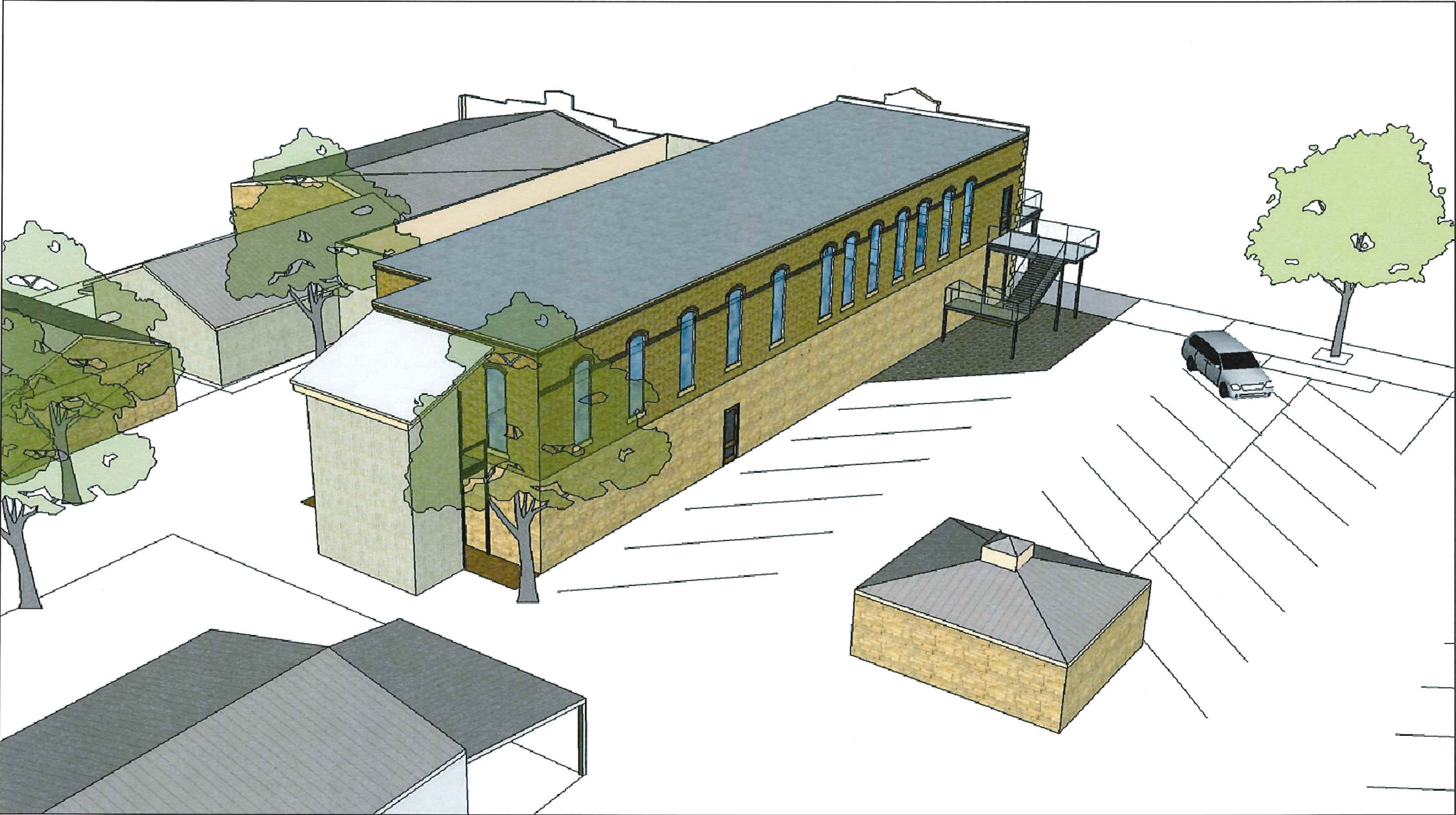
2016.09.23 | HISTORICAL REVIEW SUBMISSION

ZIEGLER BUILDING DEVELOPMENT
COLORADO RIVER PROPERTIES, LLC.
Boerne, Texas

745 E. Mulberry Avenue, Suite 601
San Antonio, Texas 78212
Office: 210.733.3535
www.rvk-architects.com
Registered Architect: George P. Vaughn, 5833

RVK **designs** and delivers
exceptional solutions that
positively **impact** the daily lives
of **people** and their environments.

NEW CONSTRUCTION



1. EXISTING WOOD WINDOW ASSEMBLY / REPLACE ALL DAMAGED GLASS PANELS / RECAULK ALL JOINTS / PAINT ALL WOOD FRAMES COMPLETE
2. EXISTING LIMESTONE TO REMAIN / PRESSURE WASH ALL EXPOSED SURFACES
3. EXISTING BRICK VENEER TO REMAIN / PRESSURE WASH ALL EXPOSED SURFACES
4. EXISTING DOOR ASSEMBLY TO REMAIN / PAINT ALL EXPOSED SURFACES
5. EXISTING WOOD WINDOW ASSEMBLY / REPLACE ALL DAMAGED GLASS PANELS / RECAULK ALL JOINTS / PAINT ALL WOOD FRAMES COMPLETE
6. EXISTING LIMESTONE TO REMIAN / PRESSURE WASH ALL EXPOSED SURFACES
7. EXISTING BRICK VENEER TO REMAIN . PRESSURE WASH ALL EXPOSED SURFACES
8. EXISTING DOOR ASSEMBLY TO REMAIN / PAINT ALL EXPOSED SURFACES
9. STANDING SEAM METAL ROOFING SYSTEM / PRE-FINISHED
10. CORRIGATED "S" DECK METAL WALL PANEL (BARN TIN) / GALVANIZED FINISH
11. WOOD FASCIA TRIM / PAINT
12. STAIR AND LANDING ASSEMBLY / CONCRETE TREADS AND LANDINGS - FLAMED FINISH / 6" X 6" STEEL POST WITH COLLARS / EXPOSED TUBE STEEL BEAMS / ALL STEEL SHALL BE PAINTED
13. GUARDRAIL / HANDRAIL ASSEMBLY / 1" X 1 1/2" 14 GAUGE TOP RAIL / 1/2" X 1/2" 16 GAUGE VERTICAL PICKETS AT 4" O.C. WITH 1 1/2" X 1 1/2" 11 GAUGE HORIZONTAL RAIL / ALL STEEL SHALL BE PAINTED

NORTH EAST VIEW

ATTACHMENT F

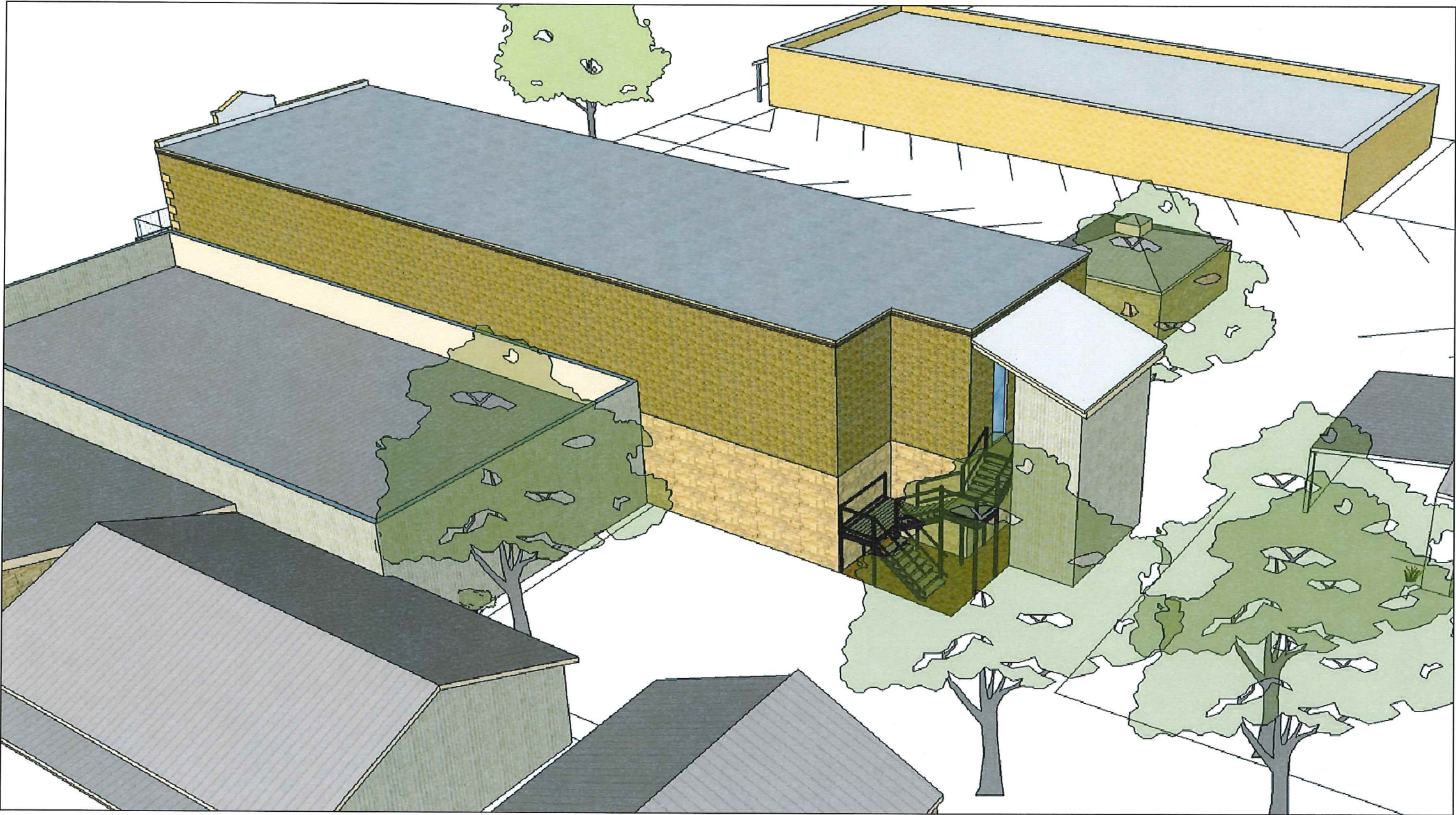


2016.09.23 | HISTORICAL REVIEW SUBMISSION

ZIEGLER BUILDING DEVELOPMENT
COLORADO RIVER PROPERTIES, LLC.
Boerne, Texas

745 E. Mulberry Avenue, Suite 601
San Antonio, Texas 78212
Office: 210.733.3535
www.rvk-architects.com
Registered Architect: George P. Vaughn, 5833

RVK **designs** and delivers
exceptional solutions that
positively **impact** the daily lives
of **people** and their environments.



NEW CONSTRUCTION

1. EXISTING WOOD WINDOW ASSEMBLY / REPLACE ALL DAMAGED GLASS PANELS / RECAULK ALL JOINTS / PAINT ALL WOOD FRAMES COMPLETE
2. EXISTING LIMESTONE TO REMAIN / PRESSURE WASH ALL EXPOSED SURFACES
3. EXISTING BRICK VENEER TO REMAIN / PRESSURE WASH ALL EXPOSED SURFACES
4. EXISTING DOOR ASSEMBLY TO REMAIN / PAINT ALL EXPOSED SURFACES
5. EXISTING WOOD WINDOW ASSEMBLY / REPLACE ALL DAMAGED GLASS PANELS / RECAULK ALL JOINTS / PAINT ALL WOOD FRAMES COMPLETE
6. EXISTING LIMESTONE TO REMIAN / PRESSURE WASH ALL EXPOSED SURFACES
7. EXISTING BRICK VENEER TO REMAIN . PRESSURE WASH ALL EXPOSED SURFACES
8. EXISTING DOOR ASSEMBLY TO REMAIN / PAINT ALL EXPOSED SURFACES
9. STANDING SEAM METAL ROOFING SYSTEM / PRE-FINISHED
10. CORRIGATED "S" DECK METAL WALL PANEL (BARN TIN) / GALVANIZED FINISH
11. WOOD FASCIA TRIM / PAINT
12. STAIR AND LANDING ASSEMBLY / CONCRETE TREADS AND LANDINGS - FLAMED FINISH / 6" X 6" STEEL POST WITH COLLARS / EXPOSED TUBE STEEL BEAMS / ALL STEEL SHALL BE PAINTED
13. GUARDRAIL / HANDRAIL ASSEMBLY / 1" X 1 1/2" 14 GAUGE TOP RAIL / 1/2" X 1/2" 16 GAUGE VERTICAL PICKETS AT 4" O.C. WITH 1 1/2" X 1 1/2" 11 GAUGE HORIZONTAL RAIL / ALL STEEL SHALL BE PAINTED

SOUTH EAST VIEW

ATTACHMENT G



2016.09.23 | HISTORICAL REVIEW SUBMISSION

ZIEGLER BUILDING DEVELOPMENT
COLORADO RIVER PROPERTIES, LLC.
Boerne, Texas

745 E. Mulberry Avenue, Suite 601
San Antonio, Texas 78212
Office: 210.733.3535
www.rvk-architects.com
Registered Architect: George P. Vaughn, 5833

RVK **designs** and delivers
exceptional solutions that
positively **impact** the daily lives
of **people** and their environments.