

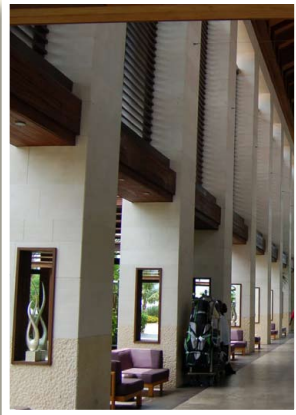
903.454.4630

www.stoneply.com

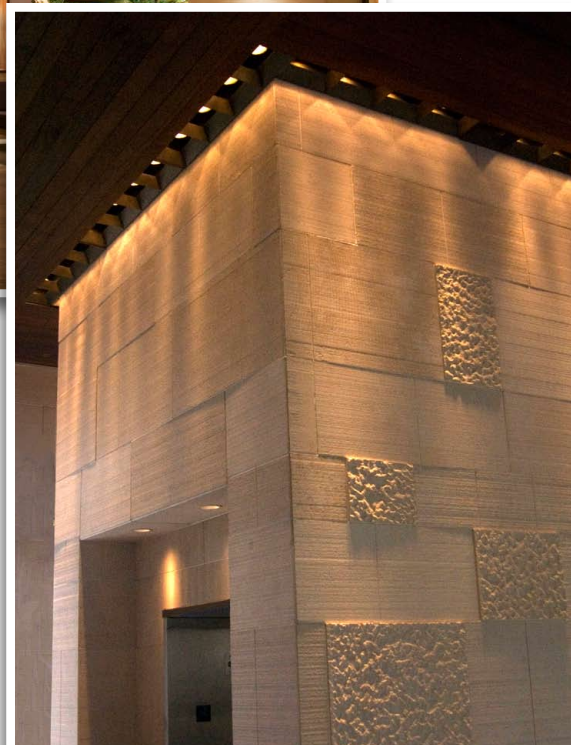
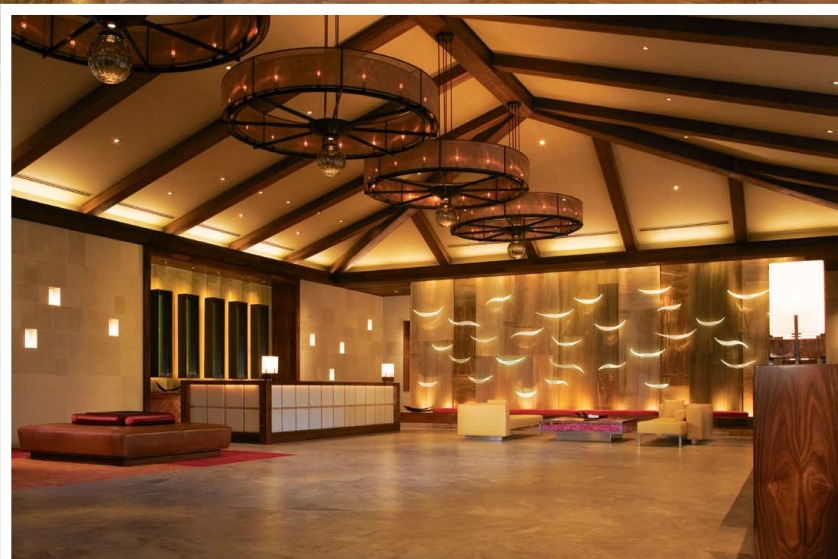
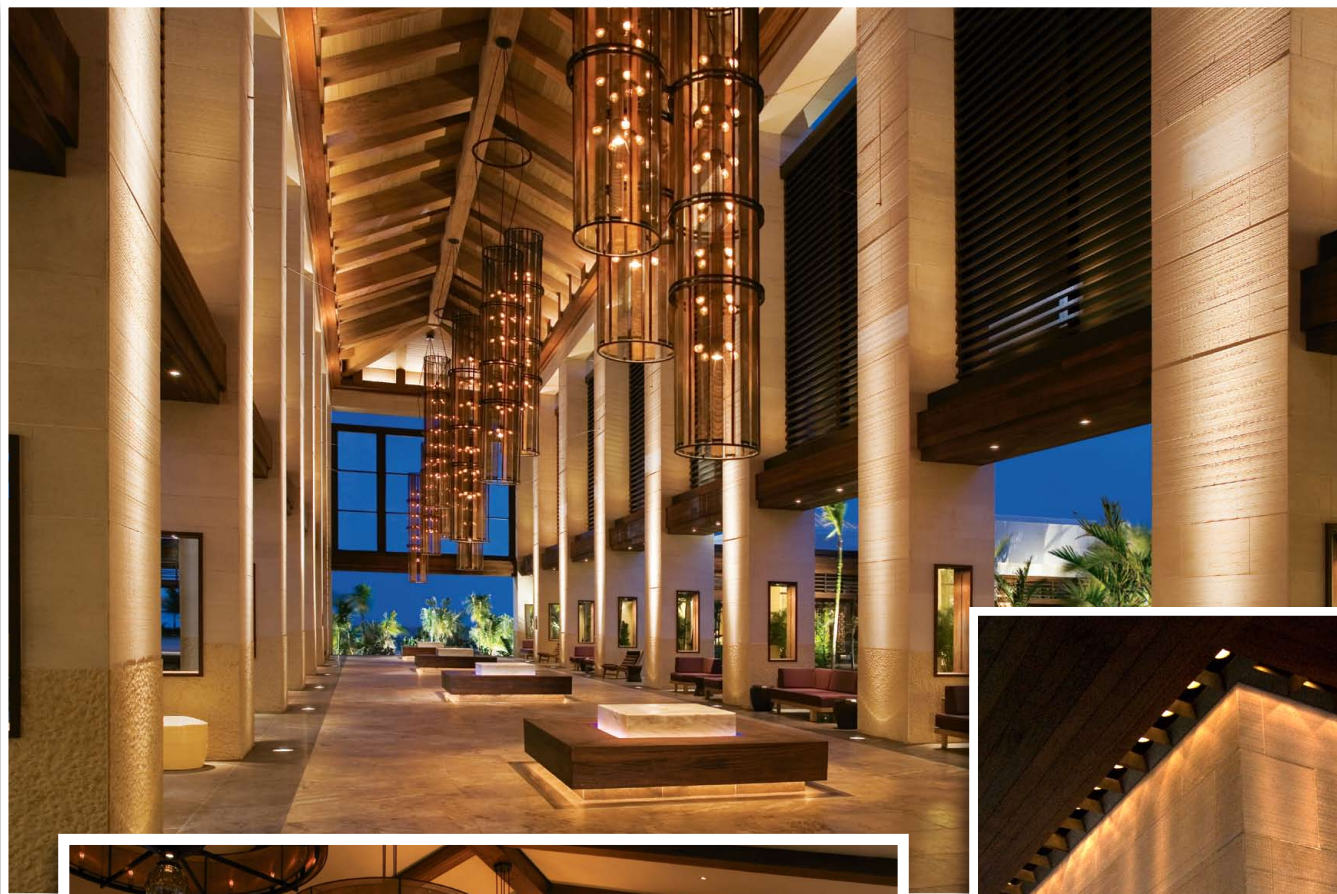
info@stoneply.com

ATLANTIS

paradise island, bahamas



Sol Kerzner, resort entrepreneur, created a beautiful themed resort that features the lost city of Atlantis. StonePly was able to fabricate, deliver, and install over 144,000 square feet of custom exterior natural stone panels in The Cove Atlantis and The Reef Atlantis. These panels feature custom sawn and bush hammered textures to give the cladding depth and beauty. Part of the reason for selecting StonePly for The Cove Atlantis was the success of the earlier cladding we supplied for Atlantis which survived numerous hurricanes, including one of which was a category 5, and has survived with minimal to no damage.



CUSTOMER'S NEEDS:

The customer needed a cladding that could both be used on the exterior and interior of the building, that matched the beauty of the resort, and added a high class feel to the resort. They were looking for a cladding that was easy to install, blended with the tropical feel of the resort, and minimized the disruption of the existing resort. The biggest challenge was to find a cladding that was impact resistant due to the weather that is inherent to the country.



STONEPLY SOLUTION:

StonePly was able to provide an impact resistant cladding that met the Miami requirements of hurricane resistance. The travertine was bonded to an aluminum honeycomb panel and attached using both Z-Clip extrusions and concealed screw attachments. All the attachments were attached in the field using #10 stainless steel TEK screws. Installation was completed on time and on budget by our qualified installation team.



StonePly was able to supply and install limestone panels that provided:

- A luxurious stone cladding
- Quick and easy installation
- 60X the impact strength of slab stone
- Low maintenance
- Impact resistant

PROJECT BACKGROUND

Project Name: Atlantis Resort The Reef and The Cove

Developer: Kerzner

Product: StonePly Marble and Travertine

When: First Phase completed in 1997

Cove and Reef completed in 2007

PALMILLA

los cabos, mexico



**The resort
has become
a well known
retreat for
Hollywood
celebrities.**

Located at the tip of the Baja California, the luxurious Palmilla Resort offers guests a view of the Sea of Cortez and the mountains of Baja. The durability and salt spray resistance of StonePly minimizes maintenance for the casually elegant feel of the resort. Installed by Stromberg, the wall cladding of StonePly Mosaic features native stone on a fiberglass composite base material. The solution allowed for a fast and strong installation that appears hand laid. The StonePly was manufactured at the StonePly plant in Texas, shipped to Baja and installed in 2003.

Architects: Tihany Design and HKS
Year of Construction: 2003

LIEBERT LEARNING CENTER

westerville, ohio



The Liebert Learning Center in Westerville, OH was built to provide training for customers, partners, Engineers and employees of the Emerson Network Power. The 69,965 square foot facility provides training for more than 1800 students per year. StonePly provided exterior Indiana Limestone Panels on both the North and South elevations. StonePly was able to meet the customer's needs by furnishing custom returns at all the windows and prefinished corners. Installation of the stone panels was completed on time by Karst and Sons Masonry, Inc using z-clip extrusions and in field attachment.

Architect: Fox Architects

General Contractor: Quandel Construction Group

Stone Contractor: Karst & Sons Masonry, Inc



PLYMOUTH MEETING MALL plymouthmeeting,pennsylvania

PROBLEM:

The customer wanted a unique storefront with 24" x 24" Academy Black Granite tiles but needed a fast and painless installation.

SOLUTION:

StonePly offered a lightweight Academy Black Granite panel consisting of natural stone laminated to an aluminum backing. The panels were installed six-times faster than traditional tile setting techniques by utilizing Z-clip extrusions attached to the back of the panels.

StonePly fabricated and furnished 24" x 24" polished Academy Black Granite tiles for the exterior of the Chico's and Olly Kids storefront. At the column covers for Ann Taylor Loft®, StonePly furnished the honed Academy Black Granite panels.

S T R O M B E R G

www.4stromberg.com
903.454.0904



Owner: Pennsylvania Real Estate Investment Trust
Architect: Create Architecture Planning and Design
Stone Contractor: IMC Construction, Inc.

TOMMY HILFIGER STORE

manhattan, new york



The Tommy Hilfiger global flagship store in New York City features StonePly stone panels. The store, located at 681 Fifth Avenue, is the largest store in the Tommy Hilfiger worldwide chain. Designed by the Tommy Hilfiger creative team in partnership with Callison Architects, the designers selected Stoneply panels for the stone cladding of the 22,000 sq ft store. Five stories tall, the store opened to celebrities and rave reviews.

In addition to the stunning StonePly stone work, the store features:

- A four story centralized staircase/ viewing platform for the unique revolving art installation
- Walnut paneling
- Venini chandeliers
- Brazilian cherry herringbone flooring
- StonePly stone panel ceilings

Designers: Tommy Hilfiger and Callison Architects
Contractor for stone: Miller Druck Specialty Contracting
Owner: Tommy Hilfiger Stores

WHITNEY NATIONAL BANK

biloxi, mississippi



After hurricane Katrina destroyed most of Biloxi Mississippi in 2005, Whitney Bank needed to rebuild. The Architects at Guild Hardy Architects specified the products tested and proven tough and durable in all weather conditions.

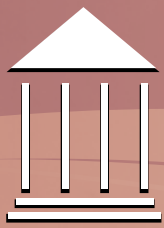
StonePly offered proven hurricane resistance and the ability to survive all types of weather. The marble faced panels were installed quickly and securely.

"We are pleased with the quality and the durability of the StonePly cladding panels".

Architects: Tommy Guild Hardy and Associates

Owner: Whitney Bank

Project Date: 2007



STONEPLY

real stone real strong real thin

CASE STUDY UCSD CANCER CENTER STONEPLY STONE CLADDING



THE CHALLENGE

- How do you make stone cladding a fast, modular process?
- How do you minimize disruption of the existing health care campus while building new facilities?
- These were the challenges that faced the UCSD and RAD Technology who wanted to clad the new facility with limestone.

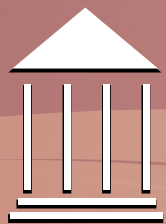
"We are all very happy with the building. The stone panels really came out great! Much thanks to you and everyone at StonePly who worked on the project. We also look forward to working with StonePly and Stromberg on future projects." Mike Kosinski, Director of Field Operations at RAD Technology Medical Systems

The owners and installers liked the idea of "quality control and high strength that the factory analyzed stone cladding system offered".

Stone is a beautiful and long lasting exterior cladding, but can be slow to install.

The designers and constructors of the UCSD facility wanted natural stone but needed fast construction with minimal disruption. They were also looking for a LEED compliant, earthquake resistant material.





STONEPLY

real stone real strong real thin

CASE STUDY UCSD CANCER CENTER STONEPLY STONE CLADDING

STONEPLY SOLUTION

StonePly supplied and installed limestone panels that provided:

- 60X the impact strength of slab stone
- Installation 6X as fast as hand set stone
- Lightweight recycled aluminum honeycomb backing

Architects and Owners had considered traditionally set limestone but the disruption and time delays that hand setting the cladding would have created made it impractical. They selected StonePly instead. "StonePly offered a lightweight cladding system with numerous advantages in faster fabrication, faster install, much higher strength and far superior seismic resistance."

CASE STUDY: UCSD CANCER TREATMENT CENTER

PROJECT BACKGROUND

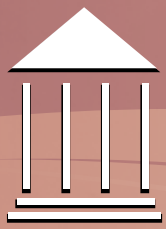
Project Name: UCSD Cancer Treatment Center

Developer: RAD Technology

Architect: WBSA

Product: StonePly Kota Limestone





STONEPLY

real stone real strong real thin

CASE STUDY UCSD CANCER CENTER STONEPLY STONE CLADDING

QUALITY AND SPEED

"Quality is very important to UCSD and the architecture and materials used in the construction of the new facilities must uphold that level quality". The University of California San Diego Medical Center is one of the premier medical and research facilities in the nation. UCSD is recognized by the National Cancer Institute as one of an elite group of Comprehensive Cancer Centers in the nation. Recently ranked among the nation's top research medical schools by U.S. News and World Report, and named among the nation's best hospitals in eight different specialties, UCSD Medical Center has a history and commitment to excellence. The owners and installers liked the idea of "quality control and high strength that the factory panelized stone cladding system offered".



THE STONEPLY PROCESS

StonePly met these needs with 60 times the impact resistance of slab stone, a recycled aluminum honeycomb backing and pre fabricated panels. Kota Limestone from India was shipped to StonePly's Texas plant where it was bonded to aluminum honeycomb backing panels. The panels were manufactured with interlocking ends. This allowed the stone panels to be erected with the panel ends "saw toothed" together to avoid straight vertical joints. Installation was accomplished 5 times faster than a traditional stone installation would have taken.

PROJECT PROFILE

- The project consists of a cancer treatment building exterior cladding, window surrounds and soffit
- The stone was select Kota limestone quarried in India and fabricated in StonePly's Greenville, Texas factory
- Installation was by StonePly

NEXT STEP

To see additional photos of the project, or for help with specifications, CAD drawings or mounting details, contact us at StonePly www.Stoneply.com or phone (903) 454-0904. We are here to help.

