

*Schwarz Land Surveying & Development, Inc.*

*P.O. Box 198, Boerne, Texas 78006*

*Phone: 830-249-8907*

*Fax: 830-584-0445*

August 21, 2016

Ms. Laura Talley  
Director  
Planning and Community Development  
City of Boerne  
402 E. Blanco Road  
Boerne, TX 78006

RE: Waiver Request for OSSF  
Westward Environmental, Inc. Office Addition

Dear Ms. Talley,

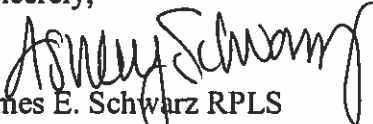
I respectfully request that a request for waiver of sewer service to the above mentioned development be placed on the next available agenda of the City of Boerne Planning and Zoning Commission for consideration. The developer is requesting that this development be allowed to continue to utilize On-Site Sewage Facilities (OSSF). Kendall County has been shown documentation that the existing system is adequate to serve the proposed new office and personnel.

This development is located at the northeast corner of the intersection of Highway 1376 (Sisterdale Highway) and Highway 87 North (North Main Street).

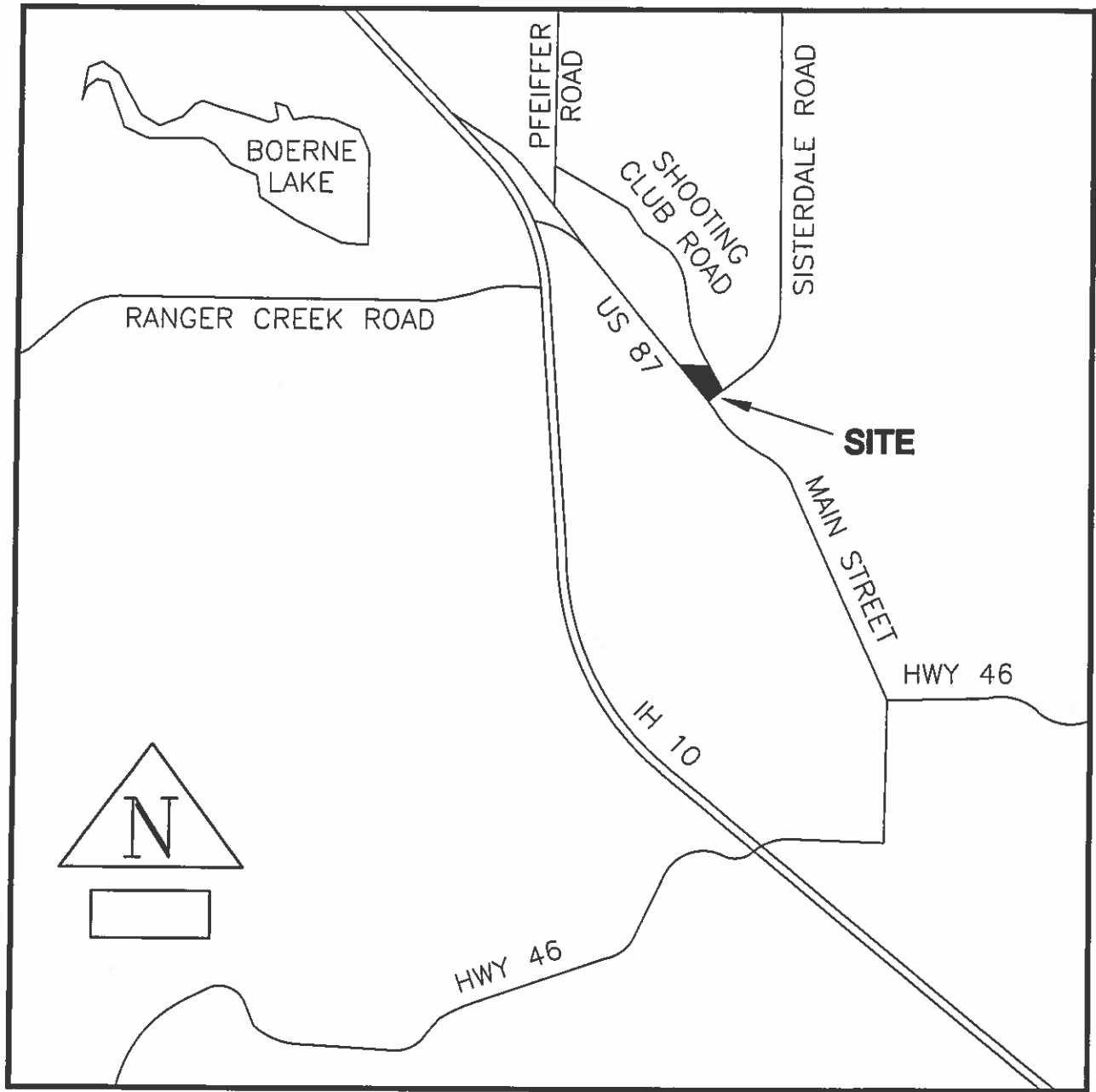
Per the City of Boerne's Subdivision Ordinance, when specifically authorized by the Planning and Zoning Commission, on-site sewage facilities may be permitted for wastewater disposal. The on-site sewage facilities will conform with all requirements of Kendall County, Cow Creek Groundwater Conservation District and Texas Commission of Environmental Quality rules and regulations.

If you have any questions or need additional information, please contact me at your earliest convenience.

Sincerely,



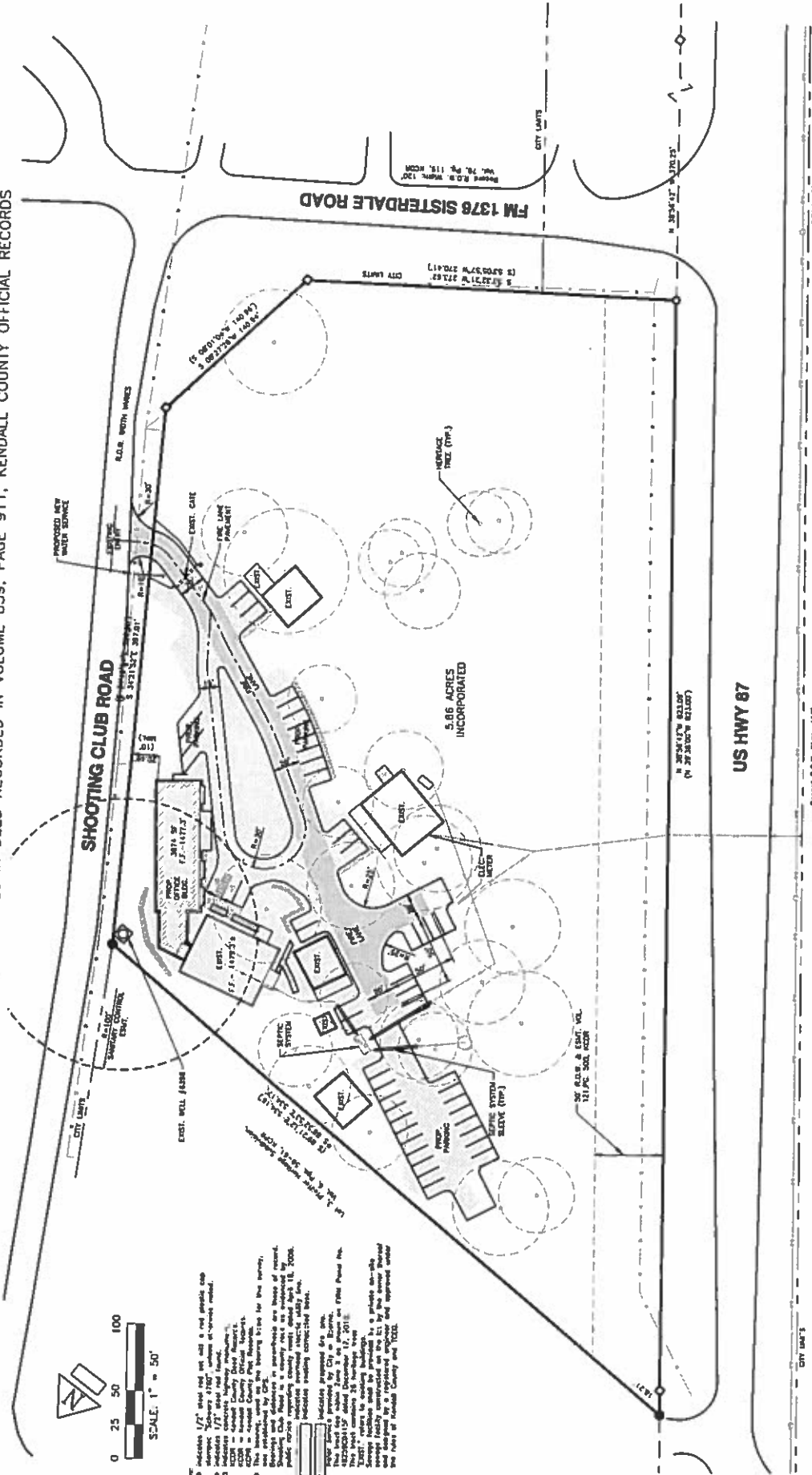
James E. Schwarz RPLS  
by Ashley C. Schwarz  
Schwarz Land Surveying & Development, Inc.  
Firm No. 10132600




LOCATION MAP  
(not to scale)

# DEVELOPMENT PLAT OF WESTWARD ENVIRONMENTAL, INC. OFFICE ADDITION

BEING 5.86 ACRES, MORE OR LESS, OUT OF THE ANTON LOCKMAR SURVEY NO. 177, ABSTRACT NO. 310, KENDALL COUNTY, TEXAS, BEING THAT SAME TRACT DESCRIBED AS 5.828 ACRES IN DEED RECORDED IN VOLUME 839, PAGE 911, KENDALL COUNTY OFFICIAL RECORDS



1. Indication 1/2" wide red line and a red circle and
2. Indication 1/2" wide red line and a red circle and
3. Indication 1/2" wide red line and a red circle and
4. Indication 1/2" wide red line and a red circle and
5. Indication 1/2" wide red line and a red circle and
6. Indication 1/2" wide red line and a red circle and
7. Indication 1/2" wide red line and a red circle and
8. Indication 1/2" wide red line and a red circle and
9. Indication 1/2" wide red line and a red circle and
10. Indication 1/2" wide red line and a red circle and
11. Indication 1/2" wide red line and a red circle and
12. Indication 1/2" wide red line and a red circle and
13. Indication 1/2" wide red line and a red circle and
14. Indication 1/2" wide red line and a red circle and
15. Indication 1/2" wide red line and a red circle and
16. Indication 1/2" wide red line and a red circle and
17. Indication 1/2" wide red line and a red circle and
18. Indication 1/2" wide red line and a red circle and
19. Indication 1/2" wide red line and a red circle and
20. Indication 1/2" wide red line and a red circle and
21. Indication 1/2" wide red line and a red circle and
22. Indication 1/2" wide red line and a red circle and
23. Indication 1/2" wide red line and a red circle and
24. Indication 1/2" wide red line and a red circle and
25. Indication 1/2" wide red line and a red circle and
26. Indication 1/2" wide red line and a red circle and
27. Indication 1/2" wide red line and a red circle and
28. Indication 1/2" wide red line and a red circle and
29. Indication 1/2" wide red line and a red circle and
30. Indication 1/2" wide red line and a red circle and
31. Indication 1/2" wide red line and a red circle and
32. Indication 1/2" wide red line and a red circle and
33. Indication 1/2" wide red line and a red circle and
34. Indication 1/2" wide red line and a red circle and
35. Indication 1/2" wide red line and a red circle and
36. Indication 1/2" wide red line and a red circle and
37. Indication 1/2" wide red line and a red circle and
38. Indication 1/2" wide red line and a red circle and
39. Indication 1/2" wide red line and a red circle and
40. Indication 1/2" wide red line and a red circle and
41. Indication 1/2" wide red line and a red circle and
42. Indication 1/2" wide red line and a red circle and
43. Indication 1/2" wide red line and a red circle and
44. Indication 1/2" wide red line and a red circle and
45. Indication 1/2" wide red line and a red circle and
46. Indication 1/2" wide red line and a red circle and
47. Indication 1/2" wide red line and a red circle and
48. Indication 1/2" wide red line and a red circle and
49. Indication 1/2" wide red line and a red circle and
50. Indication 1/2" wide red line and a red circle and
51. Indication 1/2" wide red line and a red circle and
52. Indication 1/2" wide red line and a red circle and
53. Indication 1/2" wide red line and a red circle and
54. Indication 1/2" wide red line and a red circle and
55. Indication 1/2" wide red line and a red circle and
56. Indication 1/2" wide red line and a red circle and
57. Indication 1/2" wide red line and a red circle and
58. Indication 1/2" wide red line and a red circle and
59. Indication 1/2" wide red line and a red circle and
60. Indication 1/2" wide red line and a red circle and
61. Indication 1/2" wide red line and a red circle and
62. Indication 1/2" wide red line and a red circle and
63. Indication 1/2" wide red line and a red circle and
64. Indication 1/2" wide red line and a red circle and
65. Indication 1/2" wide red line and a red circle and
66. Indication 1/2" wide red line and a red circle and
67. Indication 1/2" wide red line and a red circle and
68. Indication 1/2" wide red line and a red circle and
69. Indication 1/2" wide red line and a red circle and
70. Indication 1/2" wide red line and a red circle and
71. Indication 1/2" wide red line and a red circle and
72. Indication 1/2" wide red line and a red circle and
73. Indication 1/2" wide red line and a red circle and
74. Indication 1/2" wide red line and a red circle and
75. Indication 1/2" wide red line and a red circle and
76. Indication 1/2" wide red line and a red circle and
77. Indication 1/2" wide red line and a red circle and
78. Indication 1/2" wide red line and a red circle and
79. Indication 1/2" wide red line and a red circle and
80. Indication 1/2" wide red line and a red circle and
81. Indication 1/2" wide red line and a red circle and
82. Indication 1/2" wide red line and a red circle and
83. Indication 1/2" wide red line and a red circle and
84. Indication 1/2" wide red line and a red circle and
85. Indication 1/2" wide red line and a red circle and
86. Indication 1/2" wide red line and a red circle and
87. Indication 1/2" wide red line and a red circle and
88. Indication 1/2" wide red line and a red circle and
89. Indication 1/2" wide red line and a red circle and
90. Indication 1/2" wide red line and a red circle and
91. Indication 1/2" wide red line and a red circle and
92. Indication 1/2" wide red line and a red circle and
93. Indication 1/2" wide red line and a red circle and
94. Indication 1/2" wide red line and a red circle and
95. Indication 1/2" wide red line and a red circle and
96. Indication 1/2" wide red line and a red circle and
97. Indication 1/2" wide red line and a red circle and
98. Indication 1/2" wide red line and a red circle and
99. Indication 1/2" wide red line and a red circle and
100. Indication 1/2" wide red line and a red circle and



**Schwarz**  
Land Surveying &  
Development, Inc.

723 NORTH MAIN, BOERNE, TEXAS 78006  
Phone: (817) 261-0000 Fax: (817) 261-0001  
E-mail: info@schwarzland.com

Prepared: March 29, 2016  
Revised: April 1, 2016  
Job No. 16-0008