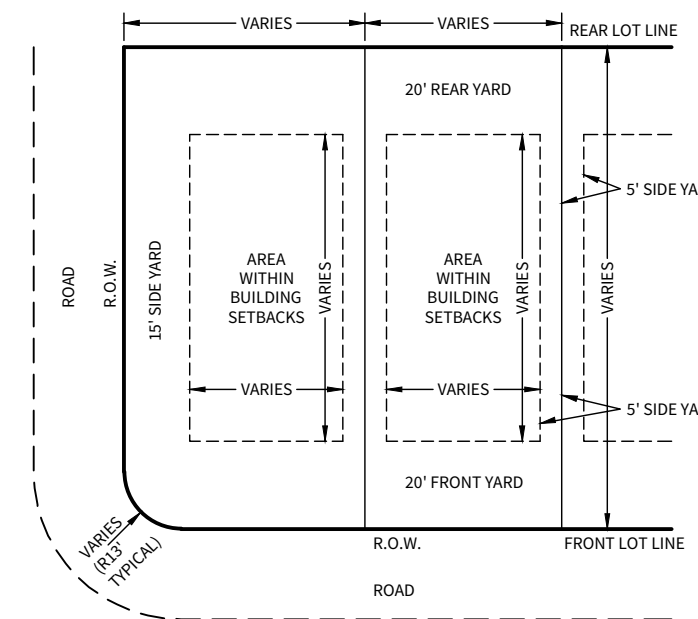
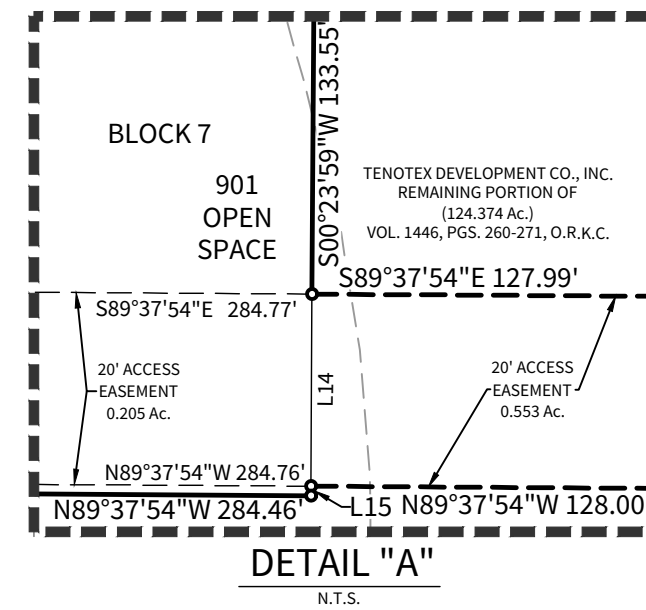
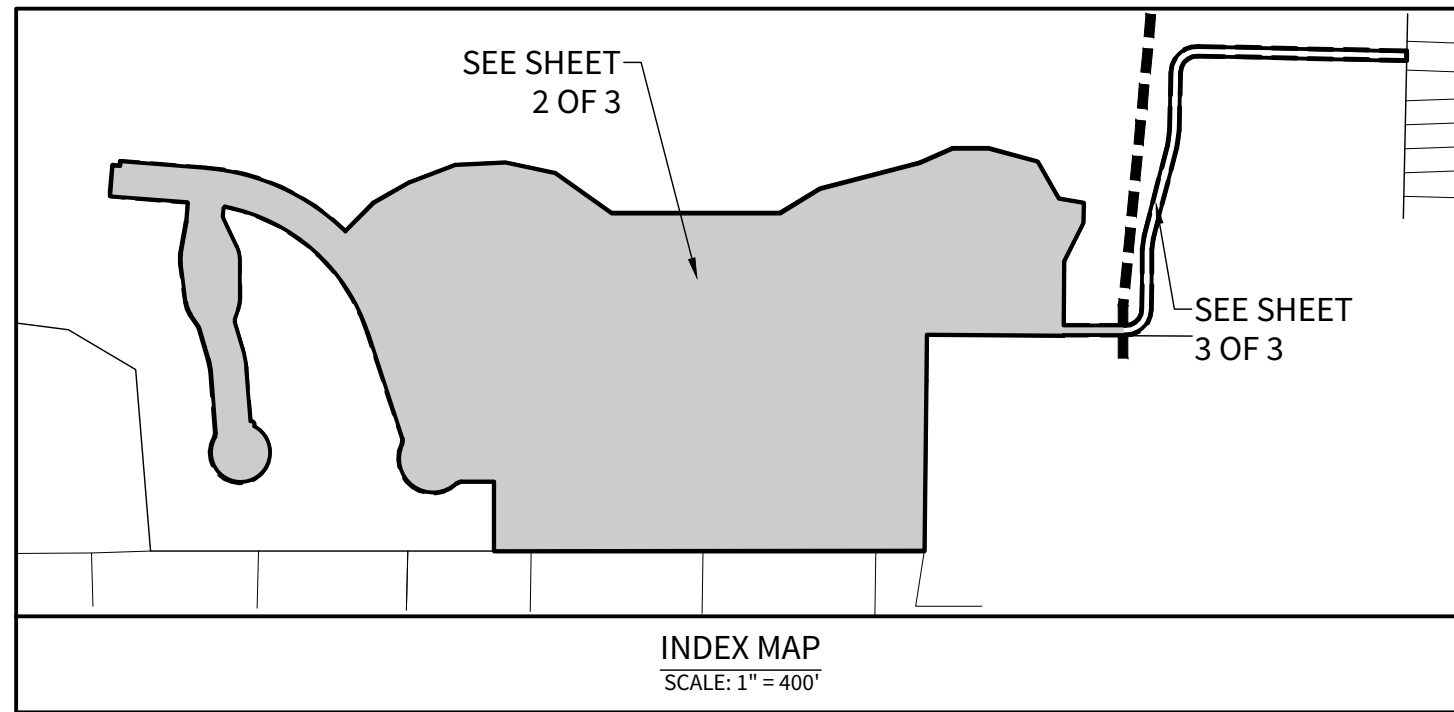


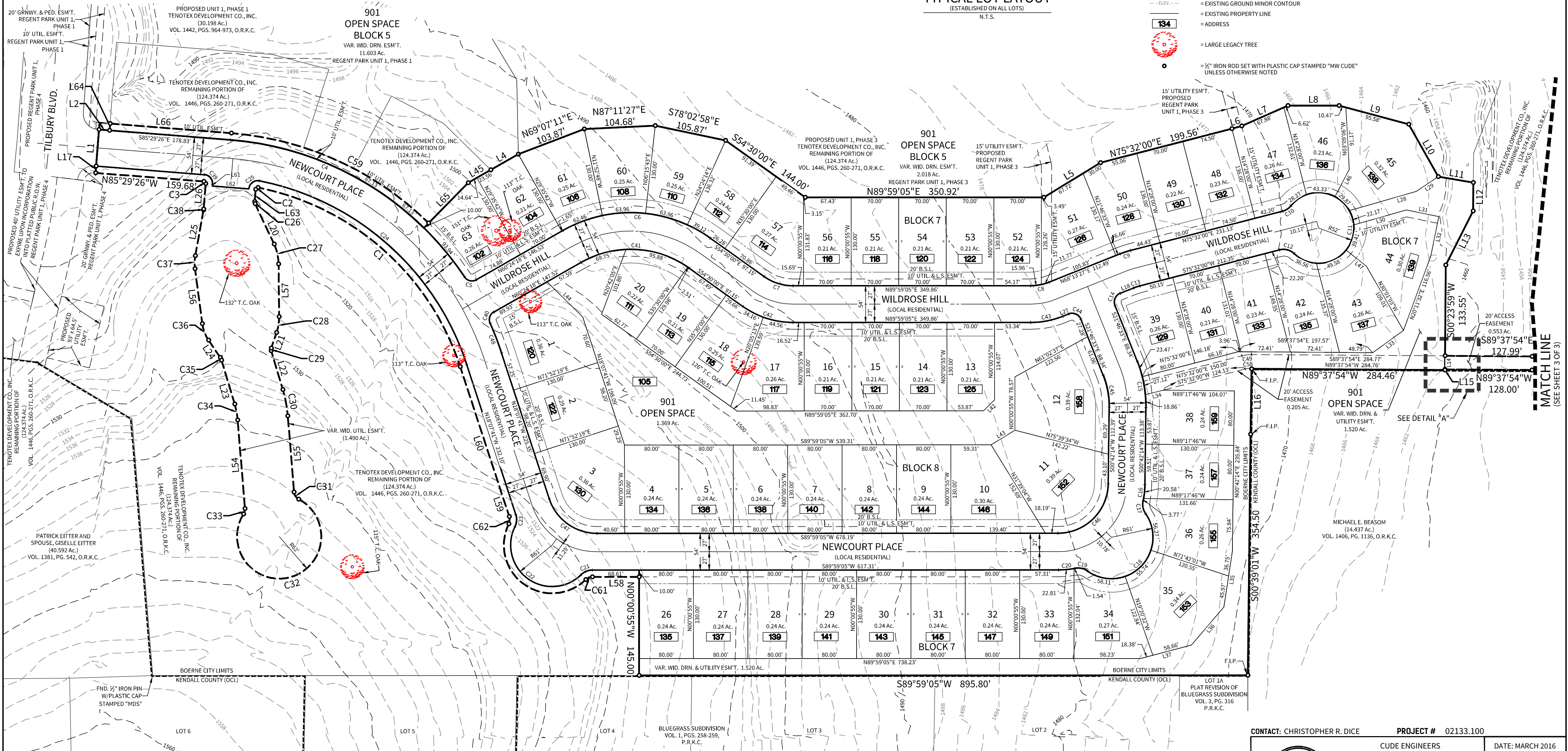
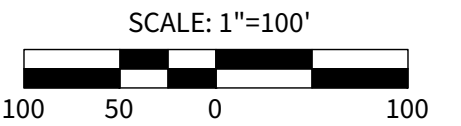
A FINAL PLAT ESTABLISHING
REGENT PARK UNIT 1, PHASE 5

BEING A 24.279 ACRE TRACT OF LAND OUT OF THE ANTONIO CRUZ SURVEY NO. 170, ABSTRACT NO. 97, KENDALL COUNTY, TEXAS, AND BEING A PORTION OF A 124.374 ACRE TRACT OF LAND DESCRIBED IN A SPECIAL WARRANTY DEED WITH VENDOR'S LIEN DATED DECEMBER 17, 2014 TO TENOTEX DEVELOPMENT CO., INC., RECORDED IN VOLUME 1446, PAGES 260-271, OFFICIAL RECORDS OF KENDALL COUNTY, TEXAS.

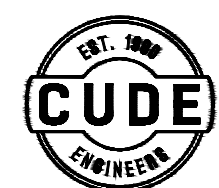


LEGEND

- AC. = ACRES
- B.S.L. = BUILDING SETBACK LINE
- CL. = CURVE NUMBER
- DRN. = DRAINAGE
- ESMT. = EASEMENT
- F.I.P. = FOUND IRON PIN
- GRN.WY. = GREENWAY
- L. = LINE NUMBER
- L.S. = LANDSCAPE
- NAD = NORTH AMERICAN DATUM
- NAVD NO. = NORTH AMERICAN VERTICAL DATUM
- N.T.S. = NOT TO SCALE
- OCL = OUTSIDE CITY LIMITS
- O.R.K.C. = OFFICIAL RECORDS OF KENDALL COUNTY, TEXAS
- PG. = PAGE
- PGS. = PAGES
- P.R.K.C. = PLAT RECORDS OF KENDALL COUNTY, TEXAS
- R. = RADIUS
- R.O.W. = RIGHT-OF-WAY
- T.C. = TRUNK CIRCUMFERENCE
- UTIL. = UTILITY
- VAR. = VARIABLE
- VOL. = VOLUME
- WAT. = WATER
- WID. = WIDTH
- () = RECORD INFORMATION
- - - = STREET CENTERLINE
- - - ELEV. - - - = EXISTING GROUND MAJOR CONTOUR
- - - ELEV. - - - = EXISTING GROUND MINOR CONTOUR
- - - = EXISTING PROPERTY LINE
- - - = ADDRESS
- 134 = LARGE LEGACY TREE
- = 1/2" IRON ROD SET WITH PLASTIC CAP STAMPED "MW CUDE" UNLESS OTHERWISE NOTED



CONTACT: CHRISTOPHER R. DICE PROJECT # 02133.100



CUDE ENGINEERS
4122 POND HILL RD. • SUITE 101
SAN ANTONIO, TEXAS 78231
TEL 210.681.2951 • FAX 210.523.7112
WWW.CUDEENGINEERS.COM
TBPE REGISTERED ENGINEERING
TBPE FIRM #455
TBPLS FIRM #10048500

DATE: MARCH 2016