

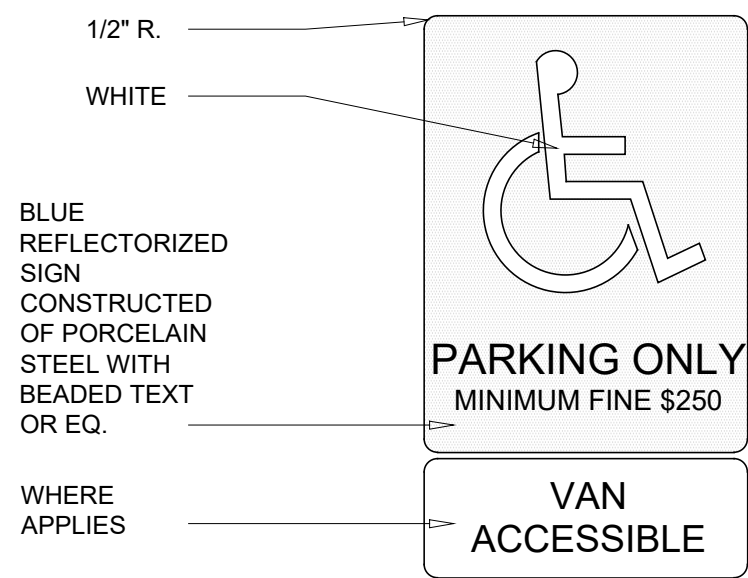
1 SITE PLAN (NO CHANGE IN BUILDING SQUARE FOOTAGE OR PARKING)  
SCALE: 1/16" = 1'-0"

### SYMBOLS LEGEND

- EXISTING CONDITIONS TO BE REMOVED
- PROPERTY LINE
- ACCESSIBLE PATH OF TRAVEL
- LIGHT POLE

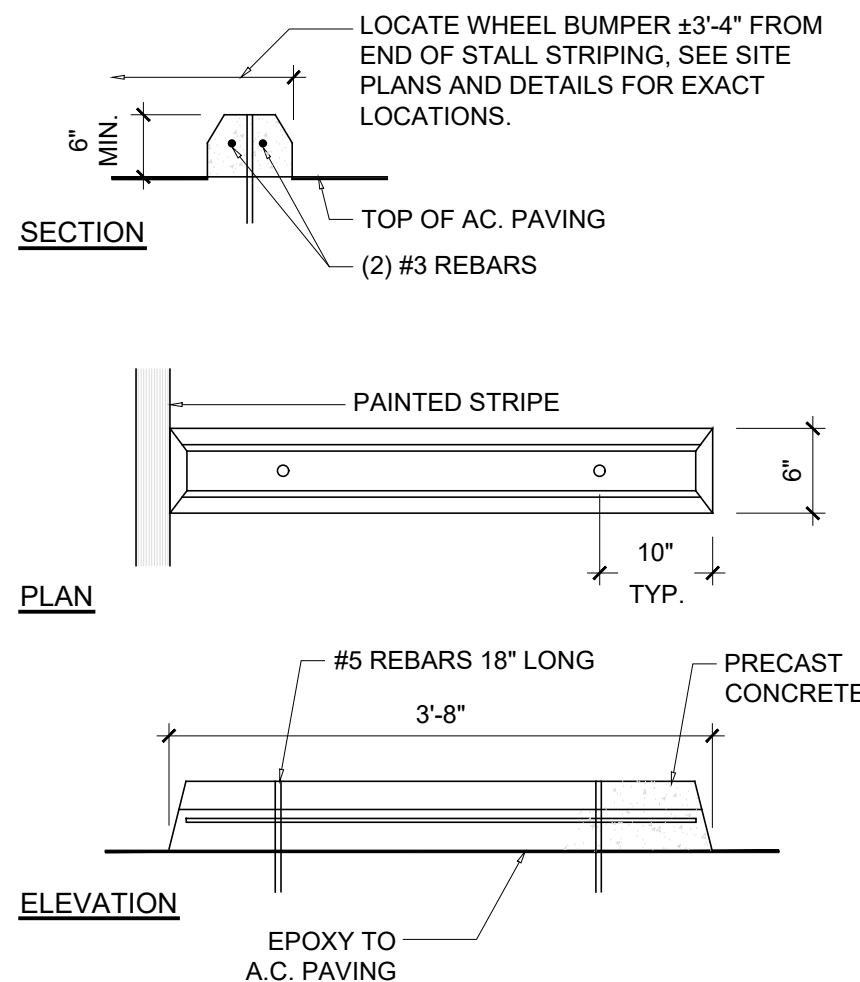
### GENERAL NOTES

- A A LAND SURVEY HAS NOT BEEN PROVIDED. EXISTING SITE CONDITIONS INDICATED HEREIN ARE DIAGRAMMATIC ONLY AND PROVIDED FOR GENERAL REFERENCE.
- B SITE DIMENSIONS TO FACE OF BUILDING, SIDEWALK, CURB GUTTER LINE, PROPERTY LINE, OR CENTER LINE OF STRIPING UNLESS OTHERWISE NOTED.
- C EXISTING CONSTRUCTION TO REMAIN TO BE PROTECTED AS REQUIRED. REPLACE AND/OR REPAIR EXISTING CONSTRUCTION DAMAGED DUE TO CONTRACTOR ACTIVITIES.
- D ALL DEMOLITION MATERIALS SHALL BECOME PROPERTY OF CONTRACTOR FOR PROPER DISPOSAL UNLESS OTHERWISE NOTED.
- E PROVIDE SMOOTH ELEVATION AND GRADING TRANSITIONS FROM NEW CONSTRUCTION TO EXISTING CONSTRUCTION TO REMAIN.
- F CONTRACTOR TO ENSURE EXISTING LANDSCAPING IS FREE OF WEEDS, FREE OF OVERGROWTH AND IS WELL MANICURED.

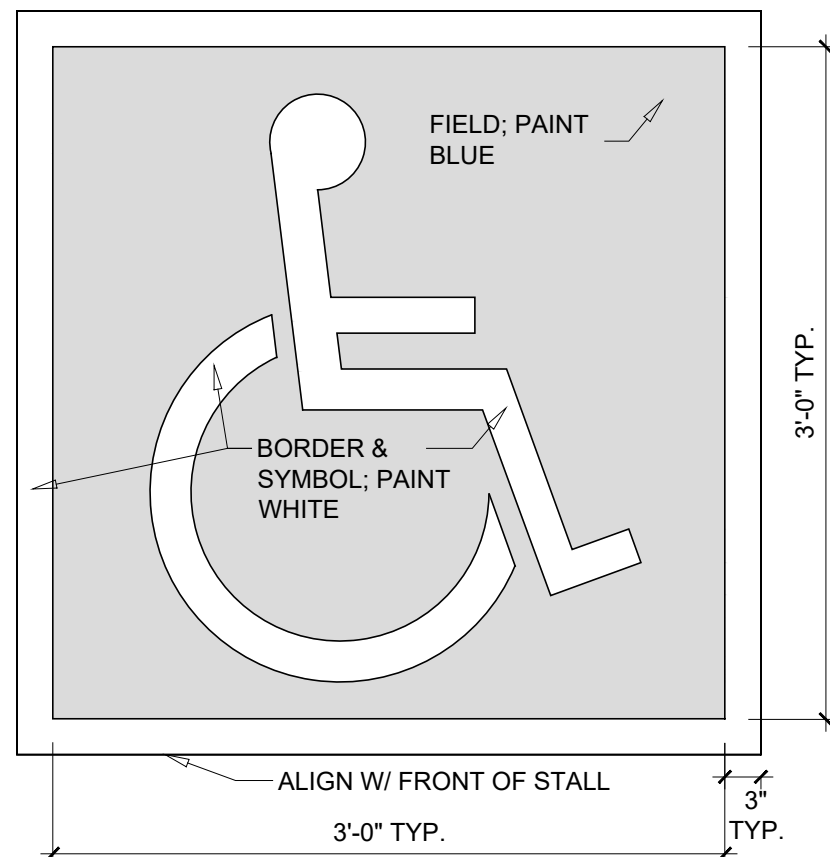


- NOTES:
- AREA OF SYMBOL SHALL BE 70 SQ. IN. MIN.
  - SIGN SHALL BE PLACED IN FRONT OF EACH ACCESSIBLE PARKING STALL, WITHIN CLEAR VIEW, BUT NOT PLACED SO AS TO OBSTRUCT PASSAGE FROM ANY PARKING STALL OR WALKWAY.

6 ACCESSIBLE PARKING SIGN  
SCALE: NTS



9 WHEEL STOP  
SCALE: NTS



- NOTES:
- ALL STROKES TO BE MIN. 3\"/>

12 INTERNATIONAL ACCESSIBILITY SYMBOL  
SCALE: NTS

### ⓧ SITE KEYNOTES

- NEW DUMPSTER LOCATION.

### ENVIRONMENTAL GENERAL NOTES

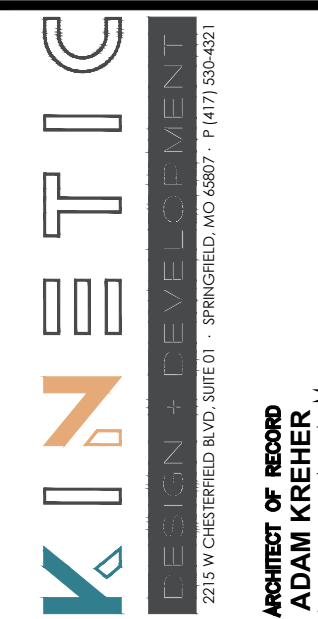
AN ENVIRONMENTAL ANALYSIS HAS NOT BEEN PERFORMED ON THE EXISTING SITE.  
IF THIS PROJECT CONTAINS HAZARDOUS MATERIALS, CONTRACTOR TO PROVIDE WORK REQUIRED FOR PROPER REMOVAL, HANDLING, AND DISPOSAL PER ENVIRONMENTAL ANALYSIS RECOMMENDATIONS.



Know what's below.  
Call before you dig.

CAUTION:  
INFORMATION ON THIS DRAWING CONCERNING TYPE AND LOCATION OF UNDERGROUND AND OTHER UTILITIES IS NOT GUARANTEED TO BE ACCURATE OR ALL INCLUSIVE. THE CONTRACTOR IS RESPONSIBLE FOR MAKING HIS OWN DETERMINATION AS TO THE TYPE AND LOCATION OF UNDERGROUND AND OTHER UTILITIES AS MAY BE NECESSARY TO AVOID DAMAGE THERETO.

PRELIMINARY  
NOT FOR  
CONSTRUCTION  
OR PERMIT



PROJECT:  
O'REILLY AUTO PARTS STORE - B02  
1032 N MAIN  
BOERNE, TX 78006

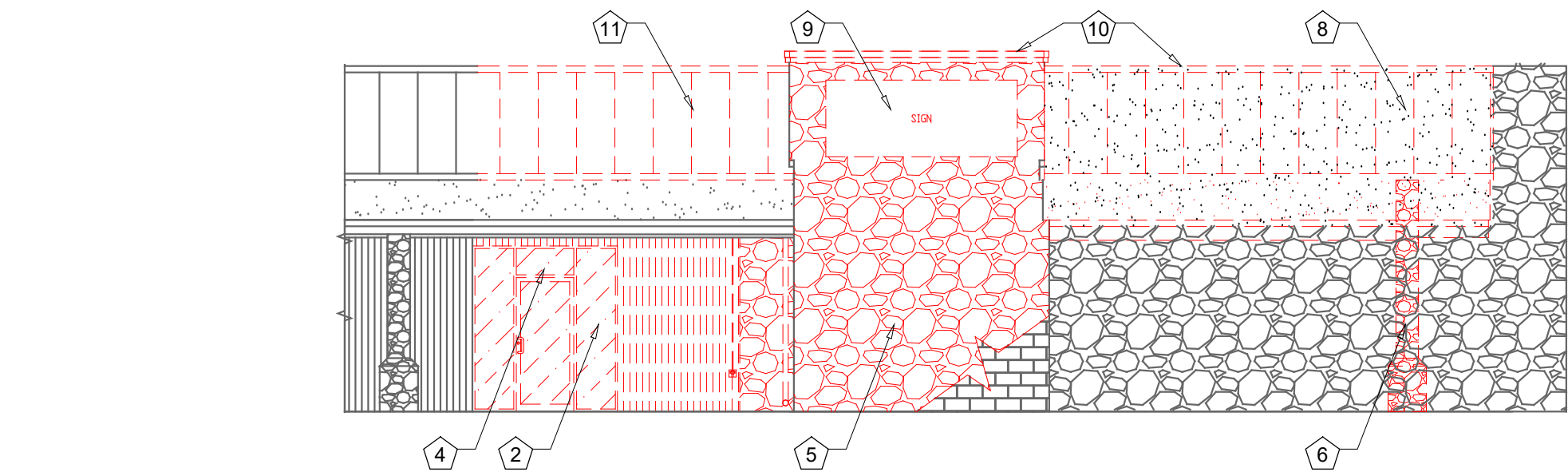
### EXISTING SITE PLAN



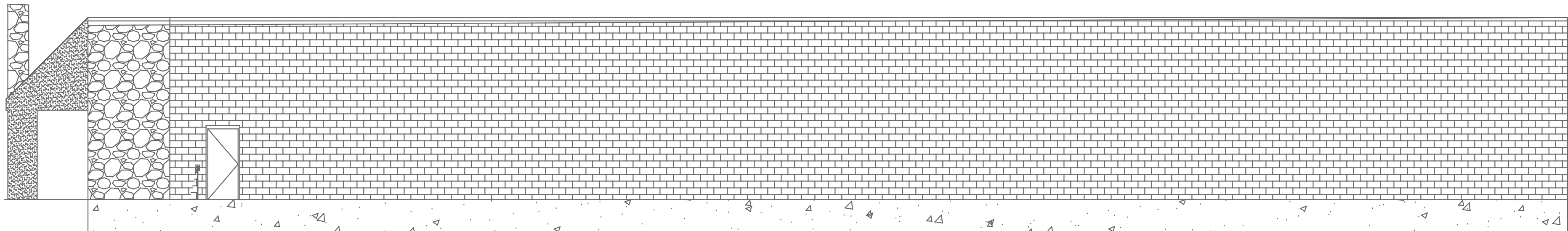
REV	DESCRIPTION	DATE
1	FOR REVIEW	XX.XX.XX
1	ADD 01	03/06/2025
2	ADD 02	04/01/2025

DRAWN BY: BM  
CHECKED BY: JC  
DATE: 01/27/25  
PROJECT NUMBER: 24308  
SHEET NUMBER:

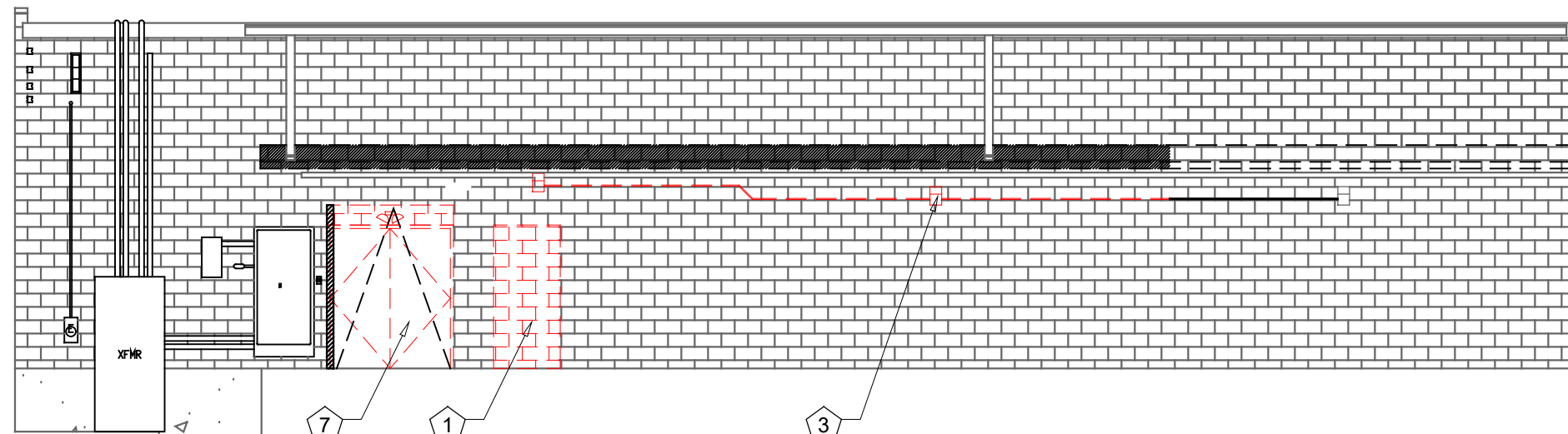
A0.2.1



1 FRONT EXTERIOR DEMOLITION ELEVATION  
SCALE: 1/8"=1'-0"



2 RIGHT EXTERIOR DEMOLITION ELEVATION  
SCALE: 1/8"=1'-0"



3 REAR EXTERIOR DEMOLITION ELEVATION  
SCALE: 1/8"=1'-0"

## LEGEND

----- EXISTING TO BE REMOVED

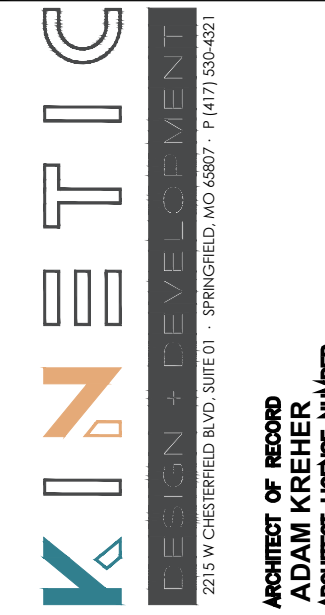
WALL CUT OUT, PER DEMOLITION PLAN

## GENERAL NOTES

- A EXISTING CONDITIONS BASED UPON INFORMATION PROVIDED BY OTHERS OR ARCHITECT'S OBSERVATION.
- B EXISTING CONSTRUCTION TO REMAIN TO BE PROTECTED AS REQUIRED. REMOVE AND REPLACE DAMAGED CONSTRUCTION DUE TO CONTRACTOR'S ACTIVITIES.
- C EXISTING CONSTRUCTION TO BE REWORKED AS REQUIRED FOR INSTALLATION OF NEW CONSTRUCTION. PATCH AND REPAIR EXPOSED SURFACES OF EXISTING CONSTRUCTION TO REMAIN AT LOCATIONS OF EXISTING CONSTRUCTION TO BE REMOVED. FIELD VERIFY SCOPE OF WORK REQUIRED.
- D NEW CONSTRUCTION TO MATCH EXISTING CONSTRUCTION TYPE AND FINISH, UNLESS OTHERWISE NOTED.

## DEMOLITION KEYNOTES

- 1 CUT OPENING IN EXTERIOR WALL, FOR NEW DOOR. REFER TO SHEET A1.2 FOR ADDITIONAL INSTRUCTION.
- 2 EXISTING STOREFRONT TO BE REMOVED AS REQUIRED FOR INSTALLATION OF NEW VESTIBULE. REFER TO SHEET A1.2 FOR ADDITIONAL INSTRUCTION.
- 3 EXISTING EXTERIOR LIGHT FIXTURE INCLUDING CONDUIT CASING TO BE REMOVED. PREPARE WALL AS REQUIRED TO RECEIVE NEW WALLPACK FIXTURE.
- 4 REMOVE SUITE/ADDRESSING AS REQUIRED. REFER TO SHEET A2.2.2 FOR ADDITIONAL INSTRUCTION.
- 5 DEMO ROCK FACE. EXISTING CMU BLOCK TO REMAIN.
- 6 DEMO EXISTING COLUMN.
- 7 DEMO EXISTING OVERHEAD DOOR, CUT AND PREPARE WALL FOR NEW OVERHEAD DOOR.
- 8 DEMO EXISTING CANOPY AND LIGHTING.
- 9 DEMO EXISTING SIGN.
- 10 DEMO EXISTING PARAPET CAP FLASHING.
- 11 DEMO EXISTING METAL ROOF, PREP FOR NEW ROOF PER SECTIONS.



PROJECT:  
O'REILLY AUTO PARTS STORE - BO2  
1032 N MAIN  
BOERNE, TX 78006

EXTERIOR DEMOLITION ELEVATIONS



REV.	DESCRIPTION	DATE
1	FOR REVIEW	XX.XX.XX
2		
3		
4		
5		
6		
7		
8		
9		
10		
11		
12		
13		
14		
15		
16		
17		
18		
19		
20		
21		
22		
23		
24		
25		
26		
27		
28		
29		
30		
31		
32		
33		
34		
35		
36		
37		
38		
39		
40		
41		
42		
43		
44		
45		
46		
47		
48		
49		
50		
51		
52		
53		
54		
55		
56		
57		
58		
59		
60		
61		
62		
63		
64		
65		
66		
67		
68		
69		
70		
71		
72		
73		
74		
75		
76		
77		
78		
79		
80		
81		
82		
83		
84		
85		
86		
87		
88		
89		
90		
91		
92		
93		
94		
95		
96		
97		
98		
99		
100		

A2.2.1







EXTERIOR LIGHT FIXTURE SCHEDULE

ALL ITEMS LISTED ON THE "LIGHT FIXTURE SCHEDULE" WILL BE SUPPLIED BY THE OWNER (O'REILLY). ITEMS SHALL BE DIRECT ORDERED AND OR RELEASED FROM THE LISTED ELECTRICAL EQUIPMENT DISTRIBUTOR:

SOURCEONE SOLUTIONS  
4341 GREEN ASH DRIVE  
EARTH CITY, MO 63045

SOURCEONE SOLUTIONS O'REILLY TEAM  
EMAIL: [ncoareilly@sourceonesolutions.com](mailto:ncoareilly@sourceonesolutions.com)  
PHONE: 314-499-6400

MARK	MFR.	CATALOG NUMBER	SUPPLY VOLTAGE	FINISH	MOUNTING		LAMPS			WATTAGE	NOTES	FIXTURE QUANTITY	
					SURFACE WALL	SURF. CEILING	OTHER	FLOURESCENT	LED				OTHER
LED EXTERIOR LIGHTS													
WS1	LSI	XWM-FT-LED-06L-30-UE-BRZ NO SUBSTITUTIONS	120	DARK BRONZE	X			X	1	45	FULL CUT-OFF, BUG RATING B1-U0-G1. ARCHITECTURAL ELEVATIONS SHOW DIMENSIONED LOCATIONS.	1	
WS2	LSI	XWM-FT-LED-03L-30-UE-BRZ-PCI120 NO SUBSTITUTIONS	120	DARK BRONZE	X			X	1	45	FULL CUT-OFF, BUG RATING B1-U0-G1. ARCHITECTURAL ELEVATIONS SHOW DIMENSIONED LOCATIONS.	1	

FIXTURE QUANTITY TO BE VERIFIED WITH SITE PLAN QUANTITY

TOTAL LUMENS:

WS1: 5536 LUMENS  
WS2: 2838 LUMENS  
ASSUMED LUMENS OF LIGHT POLES: 9,000  
LUMENS \* 16 = 144,000 LUMENS  
TOTAL AREA: 4.72 ACRES  
32,282 LUMENS PER ACRE

# BACKLIGHT-UPLIGHT-GLARE (BUG) RATING / FULL CUTOFF

ALL "LSI MRM" & "XWM" LED FIXTURES HAVE ZERO UPLIGHT AND ARE CONSIDERED FULL CUT OFF AND DARKSKY COMPLIANT. THE DELIVERED LUMEN CHART BELOW APPLIES TO "LSI XWM" FIXTURES AND CONFIRMS THAT IN EVERY CONFIGURATION THE FIXTURE PRODUCES ZERO UPLIGHT (U = 0). BUG RATING CHART FOR "LSI MRM" FIXTURES IS FOUND ON CORRESPONDING "SP" SHEETS.

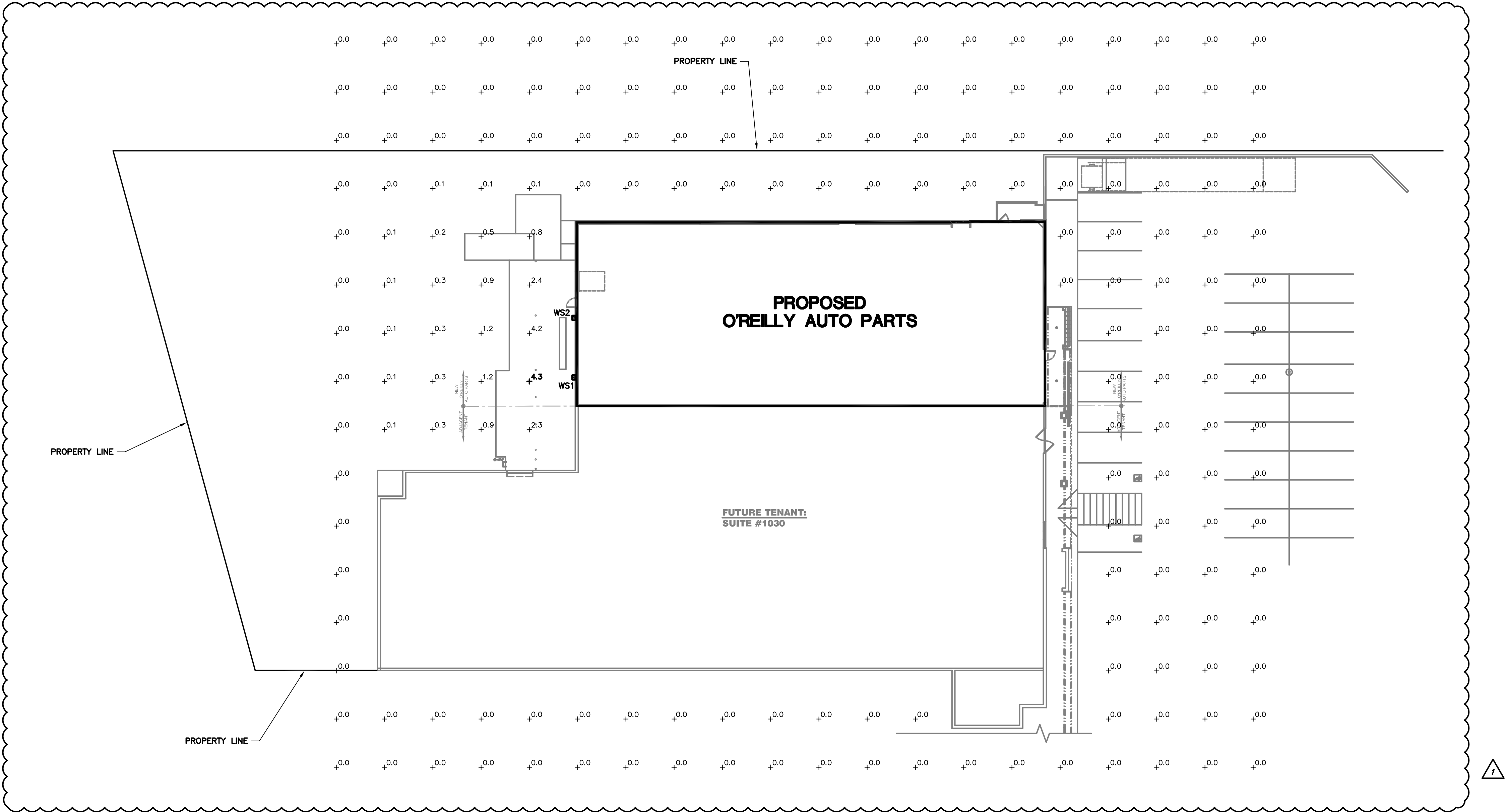
DELIVERED LUMENS*															
Lumen Package	Distribution	CRI	2700K			3000K			4000K			5000K			Wattage
			Delivered Lumens	Efficacy	BUG Rating	Delivered Lumens	Efficacy	BUG Rating	Delivered Lumens	Efficacy	BUG Rating	Delivered Lumens	Efficacy	BUG Rating	
03L	2	70	2703	120	B1-U0-G1	2822	125	B1-U0-G1	3088	137	B1-U0-G1	3088	137	B1-U0-G1	22.6
	3	70	2752	122	B1-U0-G1	2873	127	B1-U0-G1	3144	139	B1-U0-G1	3144	139	B1-U0-G1	
	FT	70	2718	120	B1-U0-G1	2838	126	B1-U0-G1	3105	137	B1-U0-G1	3105	137	B1-U0-G1	
04L	2	70	3546	120	B1-U0-G1	3702	125	B1-U0-G1	4051	137	B1-U0-G1	4051	137	B1-U0-G1	29.5
	3	70	3610	122	B1-U0-G1	3769	128	B1-U0-G1	4124	140	B1-U0-G1	4124	140	B1-U0-G1	
	FT	70	3565	121	B1-U0-G1	3722	126	B1-U0-G1	4073	138	B1-U0-G1	4073	138	B1-U0-G1	
06L	2	70	5274	118	B2-U0-G2	5506	123	B2-U0-G2	6025	135	B2-U0-G2	6025	135	B2-U0-G2	44.7
	3	70	5369	120	B1-U0-G1	5606	125	B1-U0-G1	6134	137	B1-U0-G2	6134	137	B1-U0-G2	
	FT	70	5303	119	B1-U0-G2	5536	124	B1-U0-G2	6050	136	B1-U0-G2	6050	136	B1-U0-G2	
08L	2	70	6996	113	B2-U0-G2	7304	118	B2-U0-G2	7993	129	B2-U0-G2	7993	129	B2-U0-G2	62.0
	3	70	7123	115	B1-U0-G2	7437	120	B1-U0-G2	8138	131	B2-U0-G2	8138	131	B2-U0-G2	
	FT	70	7035	113	B1-U0-G2	7345	118	B2-U0-G2	8037	130	B2-U0-G2	8037	130	B2-U0-G2	
12L	2	70	10516	103	B2-U0-G2	10979	107	B3-U0-G3	12014	118	B3-U0-G3	12014	118	B3-U0-G3	102.2
	3	70	10707	105	B2-U0-G2	11178	109	B2-U0-G2	12232	120	B2-U0-G2	12232	120	B2-U0-G2	
	FT	70	10574	103	B2-U0-G3	11040	108	B2-U0-G3	12080	118	B2-U0-G3	12080	118	B2-U0-G3	

AUTOMATIC LIGHTING CONTROL

COMPLIANCE WITH ENERGY CODE IS ACHIEVED BY:

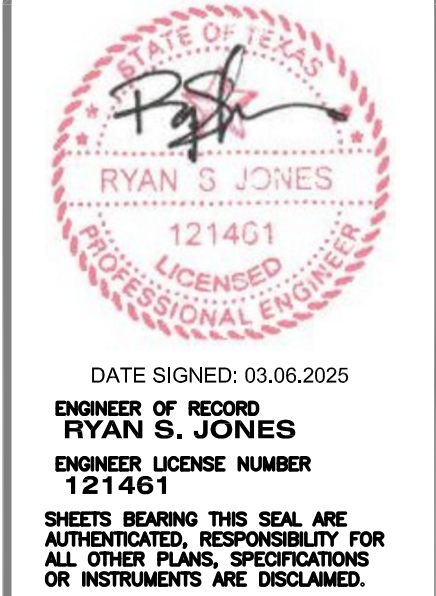
1. ONCE THE EMS HAS BEEN PROGRAMMED, THE INTERIOR AND EXTERIOR LIGHTS WILL TURN ON AND OFF USING THE FOLLOWING LOGIC: SEE EM SHEETS.  
  
INTERIOR WORK LIGHTS WILL TURN ON WITH FIRST MOTION IN THE STORE AND WILL TURN OFF 15 MINUTES AFTER LAST MOTION ONCE THE STORE IS CLOSED.  
  
INTERIOR SALES LIGHTS WILL TURN ON AT STORE OPENING AND TURN OFF 15 MINUTES AFTER STORE CLOSING.  
  
EXTERIOR SIGN LIGHTS WILL TURN ON WHEN ITS DARK ENOUGH OUTSIDE ANYTIME DURING STORE HOURS, AND WILL TURN OFF AT STORE CLOSING.  
  
EXTERIOR SITE LIGHTS WILL TURN ON WHEN IT IS DARK ENOUGH OUTSIDE ANYTIME DURING STORE HOURS OR THERE IS MOTION IN THE STORE. THEY WILL TURN OFF 30 MINUTES AFTER LAST MOTION ONCE THE STORE IS CLOSED.  
  
FOR NEW CONSTRUCTION LOCATIONS ONLY, THERE IS A TEMPORARY PROGRAM TO KEEP SIGN AND SITE LIGHTS ON UNTIL MIDNIGHT RATHER THAN THE TIMES INDICATED ABOVE. O'REILLY WILL DISABLE THIS PROGRAM ONE YEAR AFTER STORE OPENING.  
  
(EXCLUDING TX, EXTERIOR LIGHTS STAY ON OVERNIGHT FOR SECURITY PURPOSES.)

2. RESTROOMS AND OFFICES: ALL LIGHTING IN THESE AREAS ARE CONTROLLED BY OCCUPANT-SENSING DEVICES.



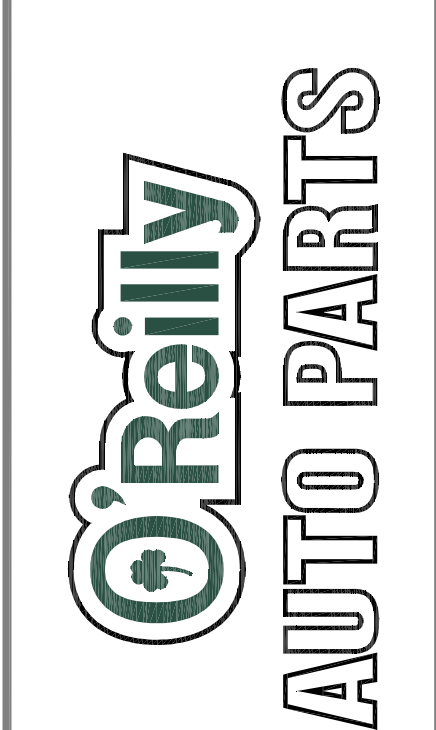
SITE LIGHTING PHOTOMETRICS

SCALE: 1"=20'



DATE SIGNED: 03.06.2025  
ENGINEER OF RECORD  
RYAN S. JONES  
ENGINEER LICENSE NUMBER  
121401  
SHEETS BEARING THIS SEAL ARE AUTHENTICATED. RESPONSIBILITY FOR ALL OTHER PLANS, SPECIFICATIONS OR INSTRUMENTS ARE DISCLAIMED.

PROJECT:  
O'REILLY AUTO PARTS STORE - BO2  
1032 N MAIN  
BOERNE, TX 78006  
SITE LIGHTING PHOTOMETRICS



REV.	DESCRIPTION	DATE
1	ADDENDUM #1	03.06.2025

DRAWN BY:  
JBR  
DATE:  
01.27.2025  
PROJECT NUMBER:  
24308  
SHEET NUMBER:

SP1