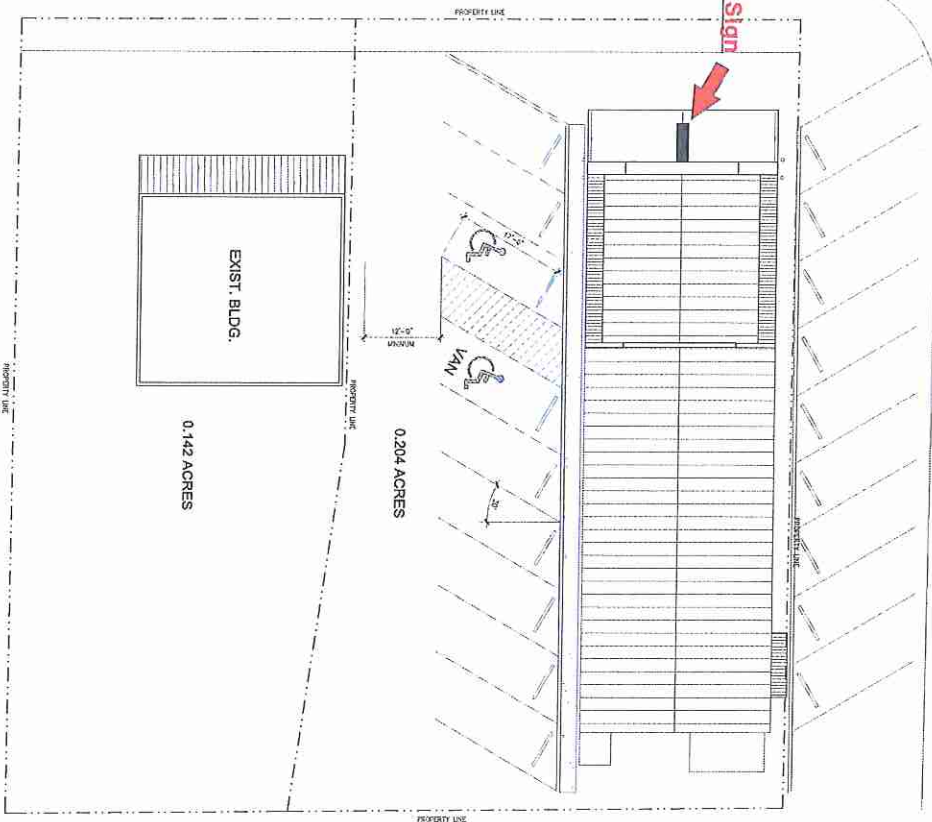


EAST OAK PARK DRIVE

D/F Blade Sign

SOUTH MAIN STREET



**Adina**  
SIGN GROUP

2438 FREEDOM DRIVE + SAN ANTONIO, TX 78217 + PH: 210.626.2800  
FAX: 210.477.2323 + WWW.AETNASIGN.COM + FOLLOW US ON 

CLIENT:	Texas Meat Co.	PHONE#:	2920.3
ADDRESS:	1101 S Main St	SALES REP:	Sybil B.
CITY:	Borine, TX	DESIGNER:	Anne V.
DTE:	12-1-15	CLIENT APPROVAL:	
COMPUTER FILE:	adina\myisc\2920_texas meat	ISO#:	18970
REVISION HISTORY:			

Unpublished Work. Adina Sign Group, LTD. All rights reserved. This is an original drawing created by Adina Sign Group, LTD. It is the property of Adina Sign Group, LTD. and is not to be reproduced, used, copied, or exhibited in any fashion without the written consent of Adina Sign Group, LTD. It may be used in connection with the project being designed by Adina Sign Group, LTD. but not otherwise. You are not authorized to show this drawing to any third party, including but not limited to, the value of the above shall subject the violator(s) to all statutory and common law remedies available to Adina Sign Group, LTD. In the enforcement of its copyright. National Building Codes now states all signs that utilize neon transformers sized at 2500 volts and up must utilize UL216 (GFI) transformers. This type of transformer must have a dedicated electrical (GFI) circuit with ground for the transformer. You are responsible to have the proper electrical service to the sign location. Please contact your Adina Sign Group representative if you need additional information.