

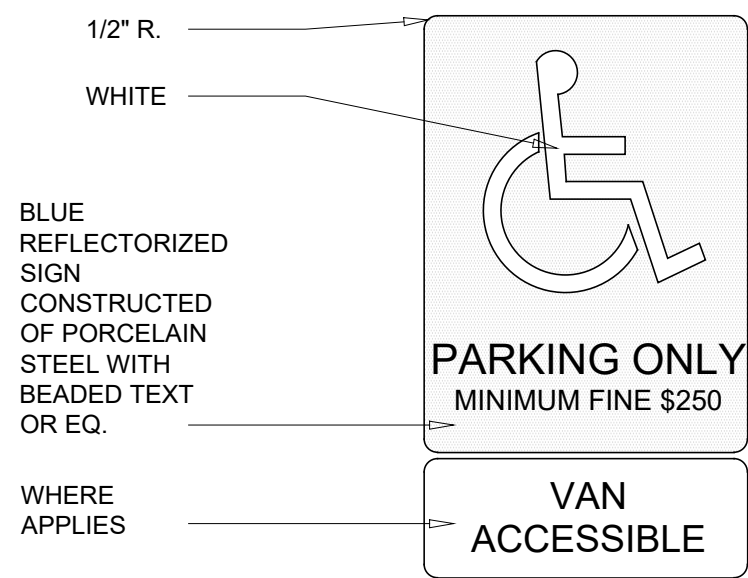
1 SITE PLAN (NO CHANGE IN BUILDING SQUARE FOOTAGE OR PARKING)
SCALE: 1/16" = 1'-0"

SYMBOLS LEGEND

- EXISTING CONDITIONS TO BE REMOVED
- PROPERTY LINE
- ACCESSIBLE PATH OF TRAVEL
- LIGHT POLE

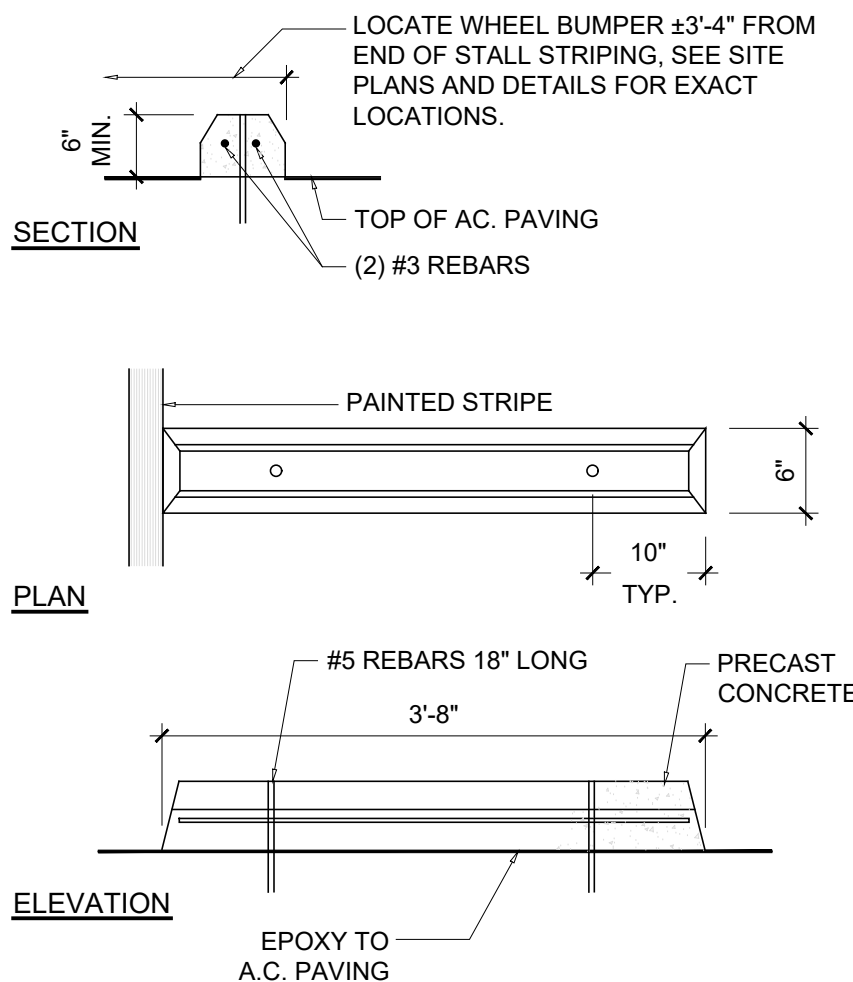
GENERAL NOTES

- A A LAND SURVEY HAS NOT BEEN PROVIDED. EXISTING SITE CONDITIONS INDICATED HEREIN ARE DIAGRAMMATIC ONLY AND PROVIDED FOR GENERAL REFERENCE.
- B SITE DIMENSIONS TO FACE OF BUILDING, SIDEWALK, CURB GUTTER LINE, PROPERTY LINE, OR CENTER LINE OF STRIPING UNLESS OTHERWISE NOTED.
- C EXISTING CONSTRUCTION TO REMAIN TO BE PROTECTED AS REQUIRED. REPLACE AND/OR REPAIR EXISTING CONSTRUCTION DAMAGED DUE TO CONTRACTOR ACTIVITIES.
- D ALL DEMOLITION MATERIALS SHALL BECOME PROPERTY OF CONTRACTOR FOR PROPER DISPOSAL UNLESS OTHERWISE NOTED.
- E PROVIDE SMOOTH ELEVATION AND GRADING TRANSITIONS FROM NEW CONSTRUCTION TO EXISTING CONSTRUCTION TO REMAIN.
- F CONTRACTOR TO ENSURE EXISTING LANDSCAPING IS FREE OF WEEDS, FREE OF OVERGROWTH AND IS WELL MANICURED.

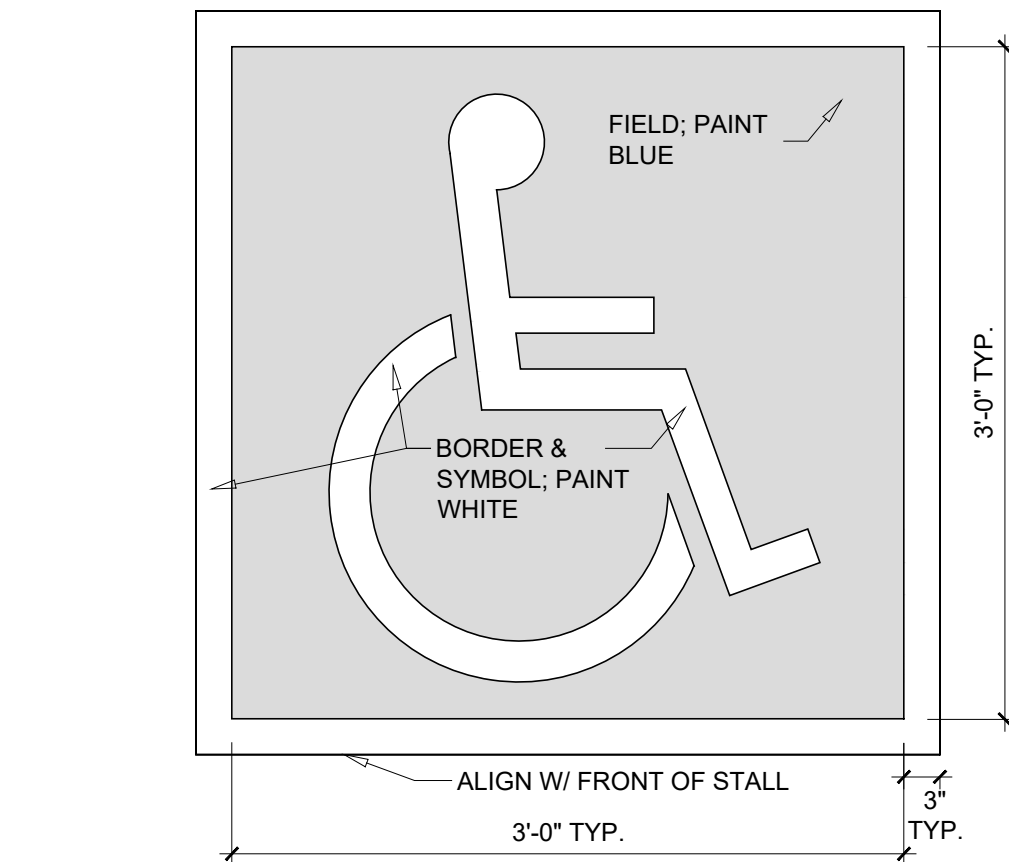


- NOTES:**
1. AREA OF SYMBOL SHALL BE 70 SQ. IN. MIN.
 2. SIGN SHALL BE PLACED IN FRONT OF EACH ACCESSIBLE PARKING STALL, WITHIN CLEAR VIEW, BUT NOT PLACED SO AS TO OBSTRUCT PASSAGE FROM ANY PARKING STALL OR WALKWAY.

6 ACCESSIBLE PARKING SIGN
SCALE: NTS



9 WHEEL STOP
SCALE: NTS



- NOTES:**
1. ALL STROKES TO BE MIN. 3\"/>

12 INTERNATIONAL ACCESSIBILITY SYMBOL
SCALE: NTS

ⓧ SITE KEYNOTES

- 1 NEW DUMPSTER LOCATION.

ENVIRONMENTAL GENERAL NOTES

AN ENVIRONMENTAL ANALYSIS HAS NOT BEEN PERFORMED ON THE EXISTING SITE.
IF THIS PROJECT CONTAINS HAZARDOUS MATERIALS, CONTRACTOR TO PROVIDE WORK REQUIRED FOR PROPER REMOVAL, HANDLING, AND DISPOSAL PER ENVIRONMENTAL ANALYSIS RECOMMENDATIONS.



**Know what's below.
Call before you dig.**

CAUTION:
INFORMATION ON THIS DRAWING CONCERNING TYPE AND LOCATION OF UNDERGROUND AND OTHER UTILITIES IS NOT GUARANTEED TO BE ACCURATE OR ALL INCLUSIVE. THE CONTRACTOR IS RESPONSIBLE FOR MAKING HIS OWN DETERMINATION AS TO THE TYPE AND LOCATION OF UNDERGROUND AND OTHER UTILITIES AS MAY BE NECESSARY TO AVOID DAMAGE THERETO.

PRELIMINARY
NOT FOR
CONSTRUCTION
OR PERMIT

KINETIC
ARCHITECTS
2011 W. CHURCH ST. SUITE 101 - SPRINGFIELD, MO 65807 - P: 417.532.4527
ARCHITECT OF RECORD
ADAM KREIER
ARCHITECT LICENSE NUMBER
23507 EXP: 11/30/25

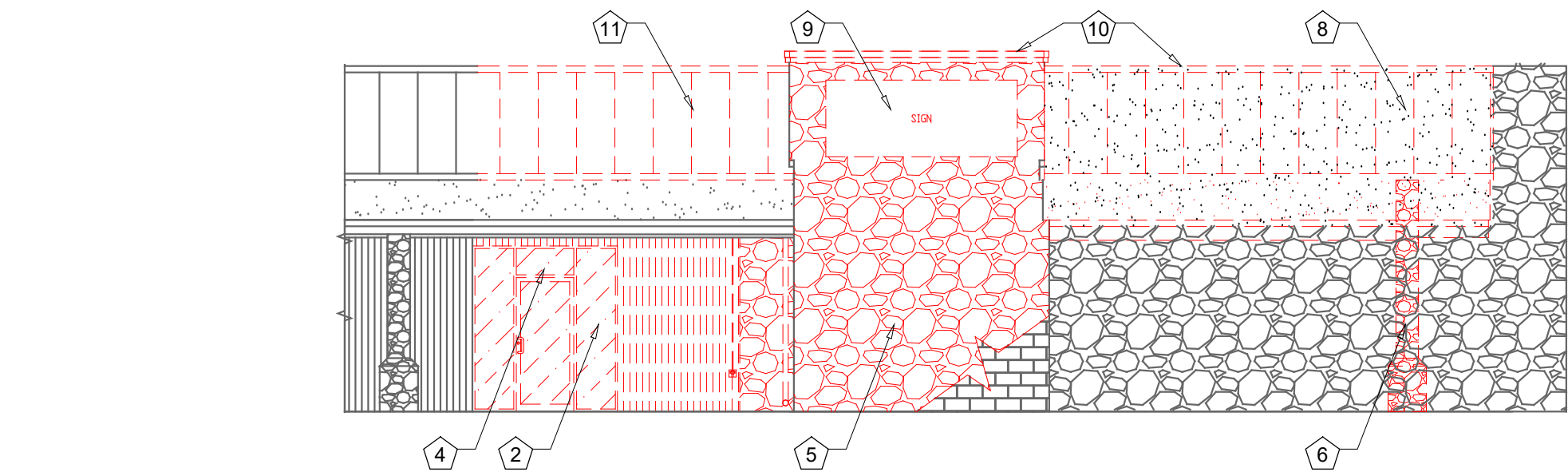
PROJECT:
O'REILLY AUTO PARTS STORE - B02
1032 N MAIN
BOERNE, TX 78006

EXISTING SITE PLAN

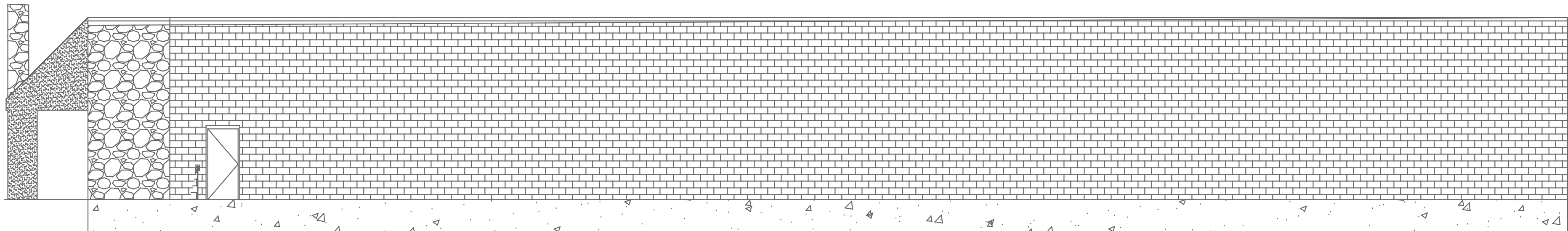
O'Reilly
AUTO PARTS

REV	DESCRIPTION	DATE
FOR REVIEW		XX.XX.XX
1	ADD 01	03/06/2025
2	ADD 02	04/01/2025
DRAWN BY:		CHECKED BY:
BM		JC
DATE:		
01/27/25		
PROJECT NUMBER:		
24308		
SHEET NUMBER:		

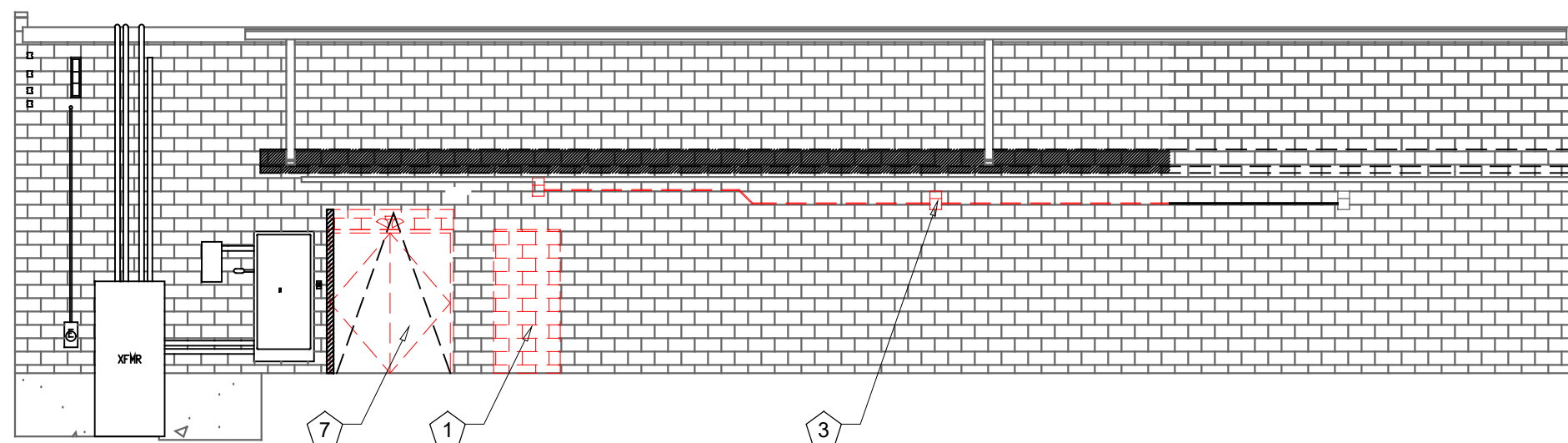
A0.2.1



1 FRONT EXTERIOR DEMOLITION ELEVATION
SCALE: 1/8"=1'-0"



2 RIGHT EXTERIOR DEMOLITION ELEVATION
SCALE: 1/8"=1'-0"



3 REAR EXTERIOR DEMOLITION ELEVATION
SCALE: 1/8"=1'-0"

LEGEND

- EXISTING TO BE REMOVED
- /// WALL CUT OUT, PER DEMOLITION PLAN

GENERAL NOTES

- A EXISTING CONDITIONS BASED UPON INFORMATION PROVIDED BY OTHERS OR ARCHITECT'S OBSERVATION.
- B EXISTING CONSTRUCTION TO REMAIN TO BE PROTECTED AS REQUIRED. REMOVE AND REPLACE DAMAGED CONSTRUCTION DUE TO CONTRACTOR'S ACTIVITIES.
- C EXISTING CONSTRUCTION TO BE REWORKED AS REQUIRED FOR INSTALLATION OF NEW CONSTRUCTION. PATCH AND REPAIR EXPOSED SURFACES OF EXISTING CONSTRUCTION TO REMAIN AT LOCATIONS OF EXISTING CONSTRUCTION TO BE REMOVED. FIELD VERIFY SCOPE OF WORK REQUIRED.
- D NEW CONSTRUCTION TO MATCH EXISTING CONSTRUCTION TYPE AND FINISH, UNLESS OTHERWISE NOTED.

DEMOLITION KEYNOTES

- 1 CUT OPENING IN EXTERIOR WALL, FOR NEW DOOR. REFER TO SHEET A1.2 FOR ADDITIONAL INSTRUCTION.
- 2 EXISTING STOREFRONT TO BE REMOVED AS REQUIRED FOR INSTALLATION OF NEW VESTIBULE. REFER TO SHEET A1.2 FOR ADDITIONAL INSTRUCTION.
- 3 EXISTING EXTERIOR LIGHT FIXTURE INCLUDING CONDUIT CASING TO BE REMOVED. PREPARE WALL AS REQUIRED TO RECEIVE NEW WALLPACK FIXTURE.
- 4 REMOVE SUITE/ADDRESSING AS REQUIRED. REFER TO SHEET A2.2.2 FOR ADDITIONAL INSTRUCTION.
- 5 DEMO ROCK FACE. EXISTING CMU BLOCK TO REMAIN.
- 6 DEMO EXISTING COLUMN.
- 7 DEMO EXISTING OVERHEAD DOOR, CUT AND PREPARE WALL FOR NEW OVERHEAD DOOR.
- 8 DEMO EXISTING CANOPY AND LIGHTING.
- 9 DEMO EXISTING SIGN.
- 10 DEMO EXISTING PARAPET CAP FLASHING.
- 11 DEMO EXISTING METAL ROOF, PREP FOR NEW ROOF PER SECTIONS.

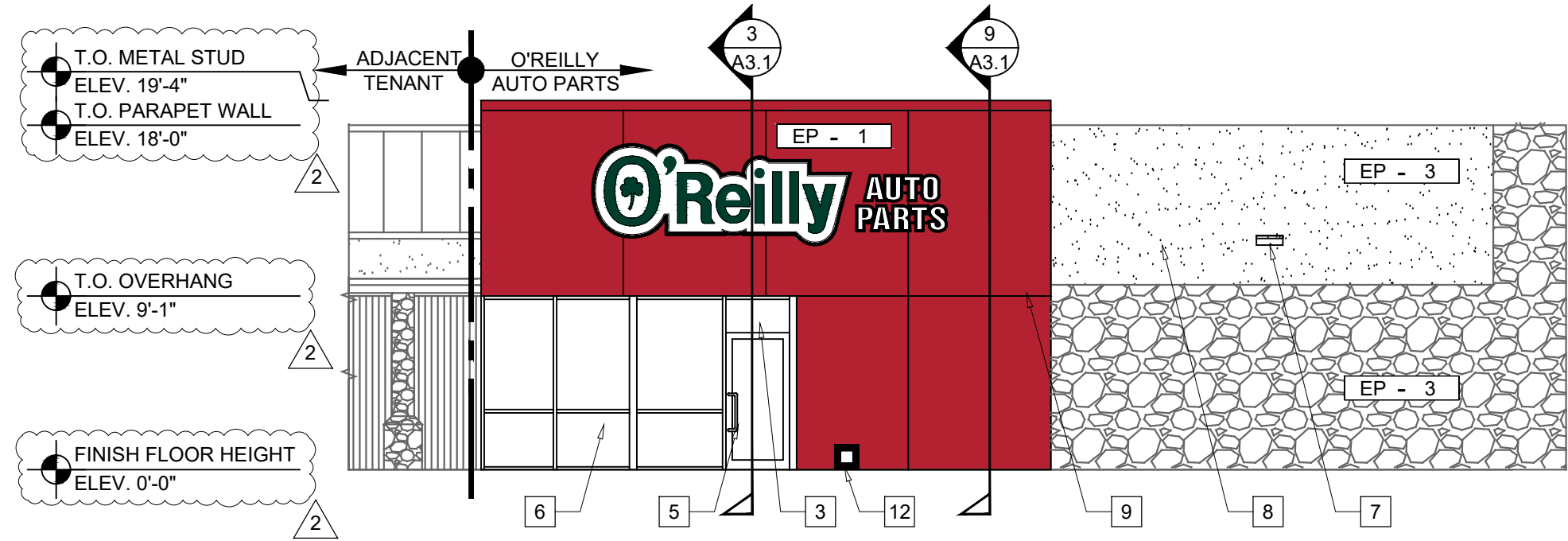
PROJECT:
O'REILLY AUTO PARTS STORE - BO2
1032 N MAIN
BOERNE, TX 78006

EXTERIOR DEMOLITION ELEVATIONS

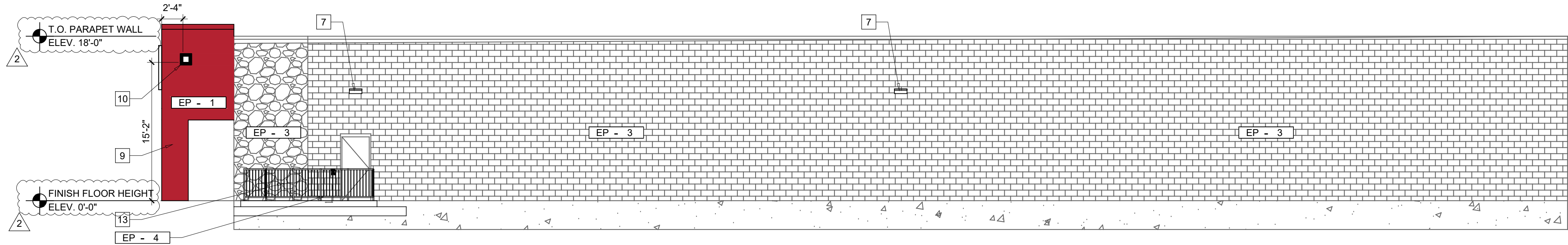
O'Reilly
AUTO PARTS

REV	DESCRIPTION	DATE
FOR REVIEW		XX.XX.XX
1		
2		
3		
4		
5		
6		
7		
8		
9		
10		
11		
DRAWN BY:	CHECKED BY:	
BM	JC	
DATE:		
01/27/25		
PROJECT NUMBER:		
24308		
SHEET NUMBER:		

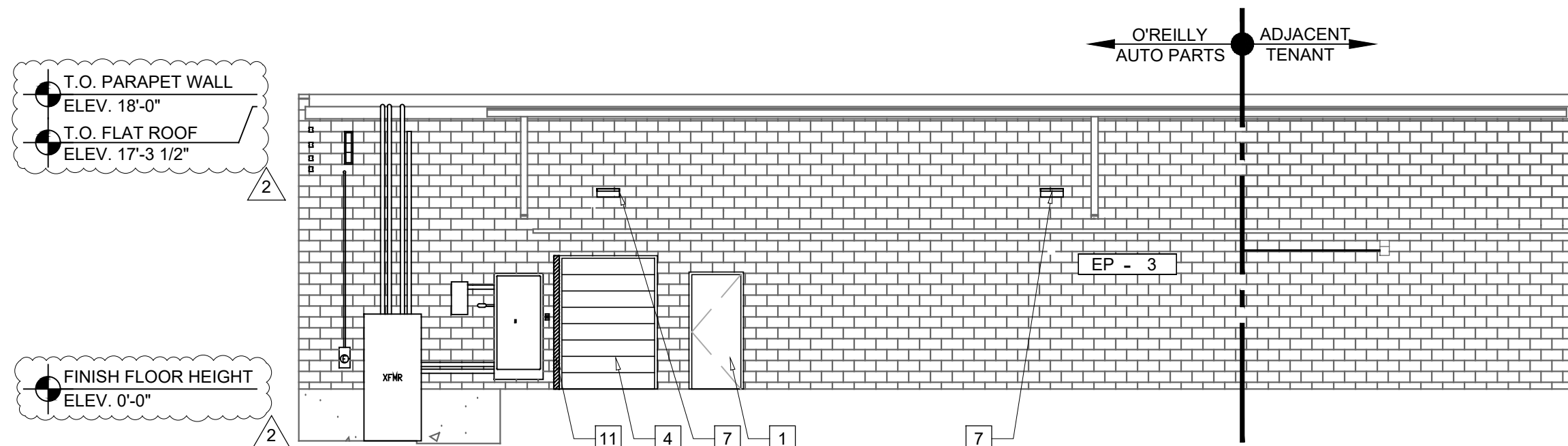
A2.2.1



1 FRONT EXTERIOR ELEVATION
SCALE: 1/8"=1'-0"



2 RIGHT EXTERIOR ELEVATION
SCALE: 1/8"=1'-0"



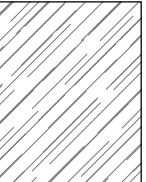
3 REAR EXTERIOR ELEVATION
SCALE: 1/8"=1'-0"

EXTERIOR FINISH SCHEDULE

NOTE: REFER TO ELEVATIONS FOR FINISH LOCATIONS

STEEL DOORS AND FRAMES
MFG: REFER PROJECT MANUAL
FINISH: FACTORY PRIMED AND FIELD PAINTED, SEMI-GLOSS FINISH
COLOR: TO MATCH ADJACENT WALL COLOR, SHERWIN WILLIAMS OR APPROVED EQUAL

STOREFRONT SYSTEM
MFG: EFCCO, KAWNEER OR VISTA WALL (NO SUBSTITUTES)
COLOR: TO MATCH EXISTING or IVY, DARK IVY OR INTERSTATE GREEN, RESPECTIVELY



WINDOW TINT
MFG: 3M
STYLE: LAYER 1 - NIGHT VISION 15 (APPLY FIRST); LAYER 2 - FASERA, MILANO (APPLY OVER)
REP: JIM MANNIX | 612.325.6509

FACADE

EP - 1

PAINT

MFR: SHERWIN WILLIAMS
STYLE: SHER-CRYL
COLOR: SW6871 POSITIVE RED
FINISH: GLOSS
APP: PER MFR SPECS FOR SURFACE
NOTES: INCLUDE THREE COMPONENT (B65T105 / B65V105 / B65C105) CLEAR URETHANE

EP - 2

PAINT

MFR: SHERWIN WILLIAMS
COLOR: SW6141 SOFTER TAN
FINISH: SEMI GLOSS
APP: PER MFR SPECS FOR SURFACE

EP - 3

PAINT

MFR: SHERWIN WILLIAMS
COLOR: SW6108 LATTE
FINISH: SEMI GLOSS
APP: PER MFR SPECS FOR SURFACE

EP - 4

PAINT

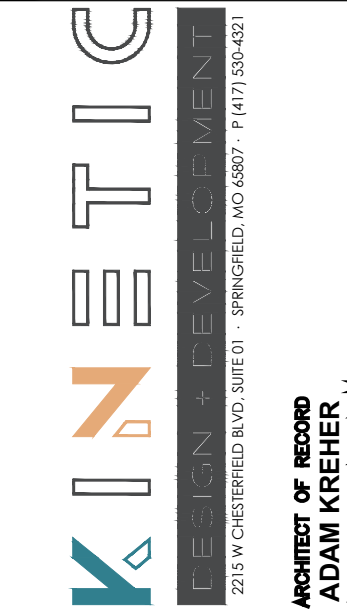
MFR: SHERWIN WILLIAMS
COLOR: SW6468 HUNT CLUB
FINISH: SEMI GLOSS
APP: PER MFR SPECS FOR SURFACE
NOTE: NEW RAILING

EXTERIOR GENERAL NOTES

- A MANUFACTURER: SHERWIN WILLIAMS SPECIFIED. EQUAL PRODUCTS BY PPG INDUSTRIES ACCEPTABLE (NO SUBSTITUTES).
- B APPLICATION: INSTALL PER MANUFACTURER'S RECOMMENDATIONS FOR PROJECT CONDITIONS. EACH COAT SPECIFIED SHALL BE SPRAY APPLIED AND BACK ROLLED. COVERAGE THICKNESS INDICATED IN WET MIL UNITS, UNLESS OTHERWISE INDICATED.

EXTERIOR KEYNOTES

- 1 NEW HOLLOW METAL DOOR AND FRAME. REFER TO SHEET **A6.1** FOR FURTHER INFORMATION.
- 2 SURFACE MOUNTED SIGN, O'REILLY CONSTRUCTION FURNISHED AND INSTALLED. PROVIDE ROUGH-IN ELECTRICAL. GC TO VERIFY ADEQUATE BACKING FOR MOUNTING. COORDINATE REQUIREMENTS WITH O'REILLY CONSTRUCTION. REFER TO SHEET **SQ2.1** IN SEPARATE EXTERIOR DESIGN PACKAGE.
- 3 PREFERRED BUILDING ADDRESS NUMBERS: 6" HIGH HELVETICA WHITE VINYL ADHERED TO EXTERIOR FACE OF GLAZING. CONFIRM WITH LANDLORD/JURISDICTION REQUIREMENTS.
- 4 NEW OVERHEAD DOOR AND FRAME. REFER TO SHEET **A6.1** FOR FURTHER INFORMATION.
- 5 NEW EXTERIOR STOREFRONT DOOR AND FRAME SYSTEM. REFER TO SHEET **A1.2** FOR FURTHER INFORMATION.
- 6 NEW EXTERIOR STOREFRONT GLAZING SYSTEM. REFER TO SHEET **A1.2** FOR FURTHER INFORMATION.
- 7 NEW WALLPACK LIGHT FIXTURE. REFER TO ELECTRICAL DRAWINGS.
- 8 PATCH AND REPAIR AFTER REMOVAL OF EXISTING CANOPY. PATCH AND REPAIR ALL MISC. HOLES, RIPS, TEARS, PENETRATIONS, ETC. AS REQUIRED AND MAKE EXTERIOR WEATHERTIGHT.
- 9 CONSTRUCT EIFS PORTAL AROUND STOREFRONT ENTRY.
- 10 OVERFLOW SCUPPER - (1) EACH SIDE OF PORTAL.
- 11 INFILL REMAINING PORTION OF OPENING WITH CMU.
- 12 INTERNAL DOWNSPOUT. SEE WALL SECTION FOR ADDITIONAL INFORMATION.
- 13 NEW COMPOSITE DECKING AND RAILING. REFER TO A1.2 FOR ADDITIONAL INFORMATION.



ARCHITECT OF RECORD
ADAM KREIER
ARCHITECT LICENSE NUMBER
23507 EXP: 11/30/25

PROJECT:
O'REILLY AUTO PARTS STORE - B02
1032 N MAIN
BOERNE, TX 78006

EXTERIOR ELEVATIONS



REV	DESCRIPTION	DATE
FOR REVIEW		XX.XX.XX
1	ADD 01	03/06/2025
2	ADD 02	04/01/2025
DRAWN BY:		CHECKED BY:
BM		JC
DATE:		
01/27/25		
PROJECT NUMBER:		
24308		
SHEET NUMBER:		

A2.2.2

EXTERIOR LIGHT FIXTURE SCHEDULE

ALL ITEMS LISTED ON THE "LIGHT FIXTURE SCHEDULE" WILL BE SUPPLIED BY THE OWNER (O'REILLY). ITEMS SHALL BE DIRECT ORDERED AND OR RELEASED FROM THE LISTED ELECTRICAL EQUIPMENT DISTRIBUTOR:

SOURCEONE SOLUTIONS
4341 GREEN ASH DRIVE
EARTH CITY, MO 63045

SOURCEONE SOLUTIONS O'REILLY TEAM
EMAIL: ncoareilly@sourceonesolutions.com
PHONE: 314-499-6400

MARK	MFR.	CATALOG NUMBER	SUPPLY VOLTAGE	FINISH	MOUNTING		LAMPS			WATTAGE	NOTES	FIXTURE QUANTITY	
					SURFACE WALL	SURF. CEILING	OTHER	FLOURESCENT	LED				OTHER
LED EXTERIOR LIGHTS													
WS1	LSI	XWM-FT-LED-06L-30-UE-BRZ NO SUBSTITUTIONS	120	DARK BRONZE	X			X	1	45	FULL CUT-OFF, BUG RATING B1-U0-G1, ARCHITECTURAL ELEVATIONS SHOW DIMENSIONED LOCATIONS.	1	
WS2	LSI	XWM-FT-LED-03L-30-UE-BRZ-PCI120 NO SUBSTITUTIONS	120	DARK BRONZE	X			X	1	45	FULL CUT-OFF, BUG RATING B1-U0-G1, ARCHITECTURAL ELEVATIONS SHOW DIMENSIONED LOCATIONS.	1	

FIXTURE QUANTITY TO BE VERIFIED WITH SITE PLAN QUANTITY

TOTAL LUMENS:

WS1: 5536 LUMENS
WS2: 2838 LUMENS
ASSUMED LUMENS OF LIGHT POLES: 9,000
LUMENS * 16 = 144,000 LUMENS
TOTAL AREA: 4.72 ACRES
32,282 LUMENS PER ACRE

BACKLIGHT-UPLIGHT-GLARE (BUG) RATING / FULL CUTOFF

ALL "LSI MRM" & "XWM" LED FIXTURES HAVE ZERO UPLIGHT AND ARE CONSIDERED FULL CUT OFF AND DARKSKY COMPLIANT. THE DELIVERED LUMEN CHART BELOW APPLIES TO "LSI XWM" FIXTURES AND CONFIRMS THAT IN EVERY CONFIGURATION THE FIXTURE PRODUCES ZERO UPLIGHT (U = 0). BUG RATING CHART FOR "LSI MRM" FIXTURES IS FOUND ON CORRESPONDING "SP" SHEETS.

DELIVERED LUMENS*

Lumen Package	Distribution	CRI	2700K			3000K			4000K			5000K			Wattage
			Delivered Lumens	Efficacy	BUG Rating	Delivered Lumens	Efficacy	BUG Rating	Delivered Lumens	Efficacy	BUG Rating	Delivered Lumens	Efficacy	BUG Rating	
03L	2	70	2703	120	B1-U0-G1	2822	125	B1-U0-G1	3088	137	B1-U0-G1	3088	137	B1-U0-G1	22.6
	3	70	2752	122	B1-U0-G1	2873	127	B1-U0-G1	3144	139	B1-U0-G1	3144	139	B1-U0-G1	
	FT	70	2718	120	B1-U0-G1	2838	126	B1-U0-G1	3105	137	B1-U0-G1	3105	137	B1-U0-G1	
04L	2	70	3546	120	B1-U0-G1	3702	125	B1-U0-G1	4051	137	B1-U0-G1	4051	137	B1-U0-G1	29.5
	3	70	3610	122	B1-U0-G1	3769	128	B1-U0-G1	4124	140	B1-U0-G1	4124	140	B1-U0-G1	
	FT	70	3565	121	B1-U0-G1	3722	126	B1-U0-G1	4073	138	B1-U0-G1	4073	138	B1-U0-G1	
06L	2	70	5274	118	B2-U0-G2	5506	123	B2-U0-G2	6025	135	B2-U0-G2	6025	135	B2-U0-G2	44.7
	3	70	5369	120	B1-U0-G1	5606	125	B1-U0-G1	6134	137	B1-U0-G2	6134	137	B1-U0-G2	
	FT	70	5303	119	B1-U0-G2	5536	124	B1-U0-G2	6050	136	B1-U0-G2	6050	136	B1-U0-G2	
08L	2	70	6996	113	B2-U0-G2	7304	118	B2-U0-G2	7993	129	B2-U0-G2	7993	129	B2-U0-G2	62.0
	3	70	7123	115	B1-U0-G2	7437	120	B1-U0-G2	8138	131	B2-U0-G2	8138	131	B2-U0-G2	
	FT	70	7035	113	B1-U0-G2	7345	118	B2-U0-G2	8037	130	B2-U0-G2	8037	130	B2-U0-G2	
12L	2	70	10516	103	B2-U0-G2	10979	107	B3-U0-G3	12014	118	B3-U0-G3	12014	118	B3-U0-G3	102.2
	3	70	10707	105	B2-U0-G2	11178	109	B2-U0-G2	12232	120	B2-U0-G2	12232	120	B2-U0-G2	
	FT	70	10574	103	B2-U0-G3	11040	108	B2-U0-G3	12080	118	B2-U0-G3	12080	118	B2-U0-G3	

AUTOMATIC LIGHTING CONTROL

COMPLIANCE WITH ENERGY CODE IS ACHIEVED BY:

1. ONCE THE EMS HAS BEEN PROGRAMMED, THE INTERIOR AND EXTERIOR LIGHTS WILL TURN ON AND OFF USING THE FOLLOWING LOGIC: SEE EM SHEETS.

INTERIOR WORK LIGHTS WILL TURN ON WITH FIRST MOTION IN THE STORE AND WILL TURN OFF 15 MINUTES AFTER LAST MOTION ONCE THE STORE IS CLOSED.

INTERIOR SALES LIGHTS WILL TURN ON AT STORE OPENING AND TURN OFF 15 MINUTES AFTER STORE CLOSING.

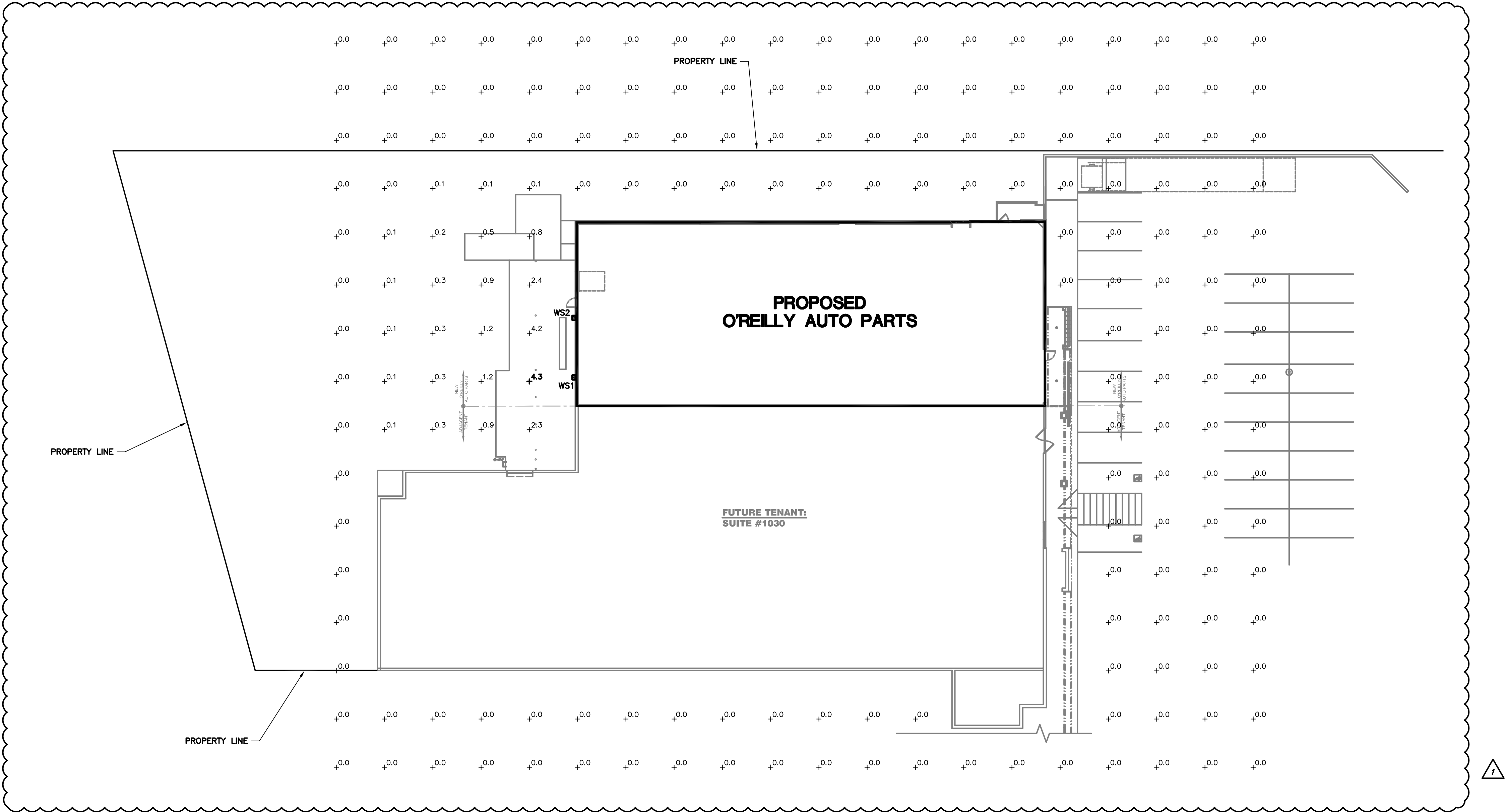
EXTERIOR SIGN LIGHTS WILL TURN ON WHEN ITS DARK ENOUGH OUTSIDE ANYTIME DURING STORE HOURS, AND WILL TURN OFF AT STORE CLOSING.

EXTERIOR SITE LIGHTS WILL TURN ON WHEN IT IS DARK ENOUGH OUTSIDE ANYTIME DURING STORE HOURS OR THERE IS MOTION IN THE STORE. THEY WILL TURN OFF 30 MINUTES AFTER LAST MOTION ONCE THE STORE IS CLOSED.

FOR NEW CONSTRUCTION LOCATIONS ONLY, THERE IS A TEMPORARY PROGRAM TO KEEP SIGN AND SITE LIGHTS ON UNTIL MIDNIGHT RATHER THAN THE TIMES INDICATED ABOVE. O'REILLY WILL DISABLE THIS PROGRAM ONE YEAR AFTER STORE OPENING.

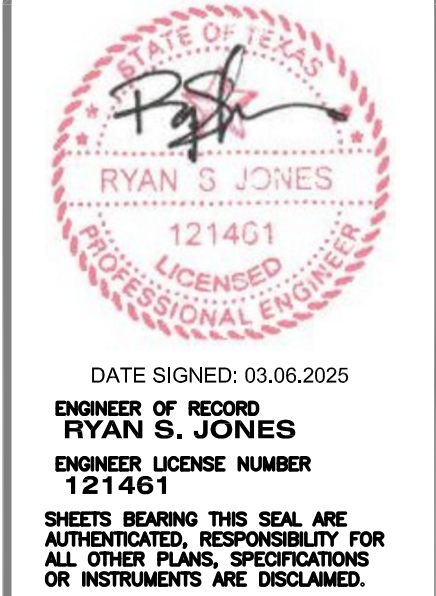
(EXCLUDING TX, EXTERIOR LIGHTS STAY ON OVERNIGHT FOR SECURITY PURPOSES.)

2. RESTROOMS AND OFFICES: ALL LIGHTING IN THESE AREAS ARE CONTROLLED BY OCCUPANT-SENSING DEVICES.



SITE LIGHTING PHOTOMETRICS

SCALE: 1"=20'



DATE SIGNED: 03.06.2025
ENGINEER OF RECORD
RYAN S. JONES
ENGINEER LICENSE NUMBER
121401
SHEETS BEARING THIS SEAL ARE AUTHENTICATED. RESPONSIBILITY FOR ALL OTHER PLANS, SPECIFICATIONS OR INSTRUMENTS ARE DISCLAIMED.

CJD
Engineering | Energy | Innovation
2225 West Chesterfield Boulevard, Suite 200, Springfield, MO 65807
P: 417.877.1700
www.cjd-eng.com

PROJECT:
O'REILLY AUTO PARTS STORE - BO2
1032 N MAIN
BOERNE, TX 78006

SITE LIGHTING PHOTOMETRICS



REV.	DESCRIPTION	DATE
1	ADDENDUM #1	03.06.2025

DRAWN BY:
JBR

CHECKED BY:
CRF

DATE:
01.27.2025

PROJECT NUMBER:
24308

SHEET NUMBER:

SP1