

Exhibit showing a 13.327 acre tract of land out of the J.M. McCulloch & Co. Survey No. 184, Abstract No. 730, Kendall County, Texas, said 13.327 acre tract being a portion of that certain 15.090 acre tract of land recorded in Volume 683, Pages 154-157, Official Records, Kendall County, Texas, a portion of that certain 12.500 acre tract of land recorded in Volume 1124, Pages 84-88, Official Records, Kendall County, Texas and a portion of Old San Antonio Road.

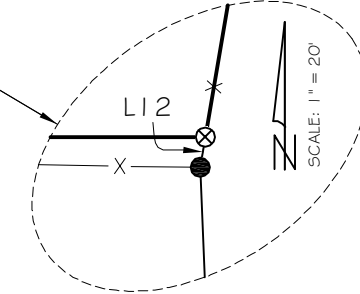
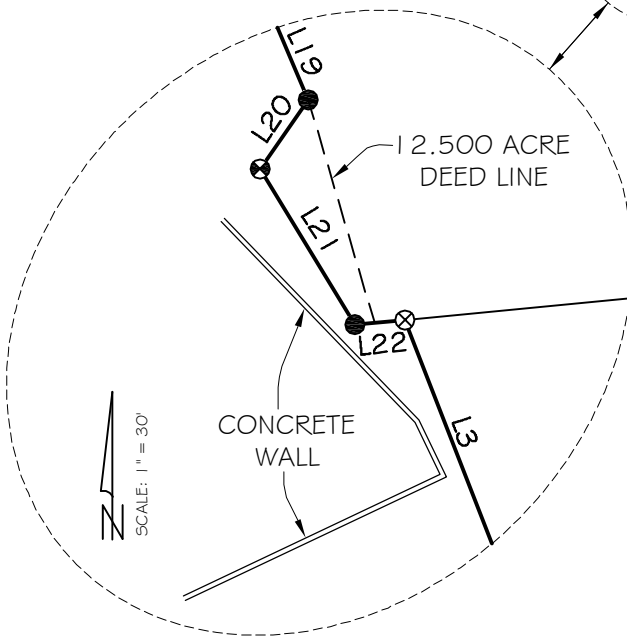
THEODORE J. REGINIER  
14.113 ACRES  
VOLUME 1353, PAGES 636-642  
OFFICIAL RECORDS

SCALE: 1" = 100'

CIBOLO PRESERVE  
TRACT 2 ~ 5.874 ACRES  
VOLUME 1147, PAGES 932-943  
OFFICIAL RECORDS

END BOUNDARY LINE AGREEMENT  
VOLUME 1527, PAGES 912-917  
OFFICIAL RECORDS

13.327 ACRES



LINE	DISTANCE	BEARING	RECORD CALL
L1	51.91'	S 09°43'51" W	R1-S 09°43'51" W 51.91'
L2	69.40'	S 03°05'33" W	R1-S 03°05'33" W 69.40'
L3	103.52'	S 21°15'30" E	R1-S 21°15'30" E 103.52'
L4	131.83'	S 37°11'18" E	(S 37°24'00" E 132.11')
L5	108.13'	S 13°02'22" E	(S 13°30'30" E 108.23')
L6	7.24'	S 12°47'45" W	(S 13°23'37" W 6.87')
L7	33.56'	S 21°24'22" W	(S 20°59'29" W 33.76')
L8	123.82'	S 02°44'17" E	(S 03°44'40" E)
L9	42.51'	S 00°29'17" E	<S 00°51'39" W 42.69>
L10	47.56'	S 01°41'26" E	<S 00°51'39" W 42.69>
L11	98.56'	S 01°47'12" W	(S 00°10'50" E)
L12	3.22'	N 09°35'18" E	(S 09°24'30" W)
L13	60.45'	S 56°42'51" W	NO RECORD
L14	162.06'	N 33°17'09" W	-----
L15	147.00'	N 33°03'47" W	-----
L16	58.22'	N 56°56'13" E	NO RECORD
L17	153.45'	N 32°46'58" W	R5-N 33°09'06" W 153.52'
L18	21.88'	N 25°53'25" W	R5-N 26°15'33" W 21.89'
L19	168.08'	S 23°34'19" E	R5-S 23°42'54" E 167.93'
L20	13.18'	S 35°00'44" W	R6-S 35°06'21" W 12.86'
L21	28.52'	S 31°16'27" E	R6-S 31°08'11" E 28.51'
L22	7.88'	N 84°28'22" E	R6-N 84°36'38" E
L23	99.82'	N 33°03'47" W	R7-N 33°03'17" W
L24	128.00'	N 31°56'30" W	R7-N 31°51'51" W 127.9'
L25	33.62'	N 26°14'28" W	R8-N 32°10'00" W 33.60'
L26	118.66'	N 26°20'24" W	R8-N 32°10'00" W 119.2'
L27	197.11'	N 24°09'03" W	R9-N 24°09'13" W 209.3'
L28	66.09'	N 65°50'57" E	-----

- LEGEND
- ( ) RECORD CALL PER VOLUME 683, PAGES 154-157, OFFICIAL RECORDS
  - ( ) RECORD CALL PER VOLUME 1135, PAGES 273-281, OFFICIAL RECORDS
  - ( ) RECORD CALL PER VOLUME 1263, PAGES 201-206, OFFICIAL RECORDS
  - ( ) RECORD CALL PER VOLUME 1263, PAGES 207-212, OFFICIAL RECORDS
  - ( ) RECORD CALL PER VOLUME 1364, PAGES 247-251, OFFICIAL RECORDS
  - ( ) RECORD CALL PER VOLUME 1527, PAGES 912-917, OFFICIAL RECORDS
  - ( ) RECORD CALL PER VOLUME 1101, PAGES 181-184, OFFICIAL RECORDS
  - ( ) RECORD CALL PER VOLUME 1440, PAGES 735-740, OFFICIAL RECORDS
  - ( ) RECORD CALL PER VOLUME 455, PAGES 488-492, OFFICIAL RECORDS
  - ( ) RECORD CALL PER VOLUME 1124, PAGES 84-88, OFFICIAL RECORDS
  - ( ) RECORD CALL PER VOLUME 1147, PAGES 932-943, OFFICIAL RECORDS
  - ( ) RECORD CALL PER VOLUME 1585, PAGES 876-880, OFFICIAL RECORDS
  - ( ) RECORD CALL PER VOLUME 1470, PAGES 231-239, OFFICIAL RECORDS
  - ( ) RECORD CALL PER VOLUME 1417, PAGES 389-393, OFFICIAL RECORDS
  - ( ) FOUND 1.25" IRON PIPE
  - ( ) SET 1/2" IRON ROD WITH AN ORANGE "PFEIFFER SURVEY" PLASTIC CAP
  - ( ) FOUND 1/2" IRON ROD
  - ( ) FOUND 1/2" IRON ROD WITH AN ORANGE "PFEIFFER SURVEY" PLASTIC CAP
  - ( ) FOUND 40D NAIL
  - ( ) FOUND 60D NAIL
  - ( ) FOUND 5/8" IRON ROD
  - ( ) FOUND 3/4" IRON PIPE
  - ( ) CALCULATED POINT
  - ( ) SET NAIL IN CONCRETE
  - ( ) WIRE FENCE
  - ( ) UTILITY POLE
  - ( ) OVERHEAD UTILITIES

DARLENE LEHMAN AND PATRICE HOLLY MAINZ  
10.794 ACRE TRACT (TRACT A)  
VOL. 1470 PGS. 231-239,  
OFFICIAL RECORDS

DARLENE LEHMAN AND PATRICE HOLLY MAINZ  
0.110 ACRE TRACT (TRACT B)  
VOL. 1470 PGS. 231-239,  
OFFICIAL RECORDS

KAT BOERNE LLC  
REMAINDER OF 2.811 ACRES  
VOLUME 1585, PAGES 876-880  
OFFICIAL RECORDS

FAZ-NEUTZE, INC.  
5.386 ACRE TRACT  
VOLUME 1440 PAGES 735-740  
OFFICIAL RECORDS

AMANDA WHITING  
1.128 ACRE TRACT  
VOLUME 1381 PAGES 1093-1095  
OFFICIAL RECORDS

PRISCILLA JEAN HEARD  
REMAINDER OF 15.090 ACRES  
VOLUME 683, PAGES 154-157  
OFFICIAL RECORDS

REMAINING PORTION OF A  
23.31 ACRE TRACT  
VOLUME 110, PAGES 579-581  
DEED RECORDS

CIBOLO PRESERVE  
11.022 ACRES  
VOLUME 1558, PAGES 522-527  
OFFICIAL RECORDS

CIBOLO PRESERVE  
500.0 ACRES  
VOLUME 1135, PAGES 273-281  
OFFICIAL RECORDS

CIBOLO PRESERVE  
2.044 ACRES  
VOLUME 1263, PAGES 201-206  
OFFICIAL RECORDS

CIBOLO PRESERVE ~ 1.355 ACRES  
VOLUME 1263, PAGES 207-212  
OFFICIAL RECORDS

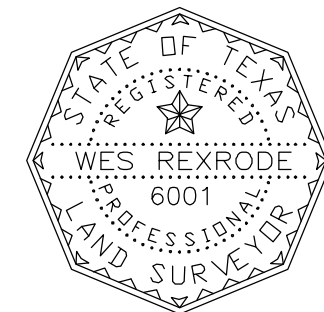
CIBOLO PRESERVE ~ 1.75 ACRES  
VOLUME 1312, PAGES 703-708  
OFFICIAL RECORDS

CIBOLO PRESERVE ~ 1.0863 ACRES  
VOLUME 1364, PAGES 247-251  
OFFICIAL RECORDS

JERRY L. KNIPPA  
REMAINING PORTION OF A  
41.264 ACRES  
VOLUME 113, PAGES 9-13  
DEED RECORDS

JERRY L. KNIPPA  
11.409 ACRES  
VOLUME 1101, PAGES 181-184  
OFFICIAL RECORDS

- NOTES:
- 1) THIS EXHIBIT WAS PERFORMED WITHOUT THE BENEFIT OF A CURRENT TITLE COMMITMENT. THEREFORE ALL SETBACKS, EASEMENTS AND ENCUMBRANCES MAY NOT BE SHOWN HEREON.
  - 2) ADJOINING PROPERTY INFORMATION SHOWN HEREON IS FOR INFORMATIONAL PURPOSES ONLY.
  - 3) BASIS OF BEARING: TEXAS STATE PLANE COORDINATE SYSTEM, SOUTH CENTRAL ZONE, 4204, NAD 83.
  - 4) ONLY APPARENT UTILITIES WERE LOCATED. NO ATTEMPT HAS BEEN MADE AS PART OF THIS SURVEY TO SHOW THE EXISTENCE, SIZE, DEPTH, CONDITION, OR LOCATION OF ANY UNDERGROUND UTILITY. FOR INFORMATION REGARDING UNDERGROUND UTILITIES PLEASE CONTACT THE APPROPRIATE AGENCY.
  - 5) FENCES NEAR THE BOUNDARY LINE MEANDER AND ARE NOT NECESSARILY ON THE BOUNDARY LINE.
  - 6) NOT ALL IMPROVEMENTS ARE SHOWN HEREON PER LAND OWNER.
  - 7) THIS EXHIBIT IS FOR ANNEXATION PURPOSES ONLY.



I HEREBY CERTIFY THAT THIS EXHIBIT WAS MADE ON THE GROUND AND THAT THIS PLAT CORRECTLY REPRESENTS THE FACTS FOUND AT THE TIME OF THIS SURVEY.

*Wes Rexrode*

Wes Rexrode - Pfeiffer Land Surveying  
Registered Professional Land Surveyor No. 6001  
Boerne, Texas 78006 Ph. 830 - 249 - 3385  
DATE: SEPTEMBER 7, 2017 JOB NUMBER: 25-16

**PFEIFFER LAND SURVEYING**  
918 ADLER STREET  
BOERNE, TX 78006  
830-249-3385  
FIRM NO. 10193761