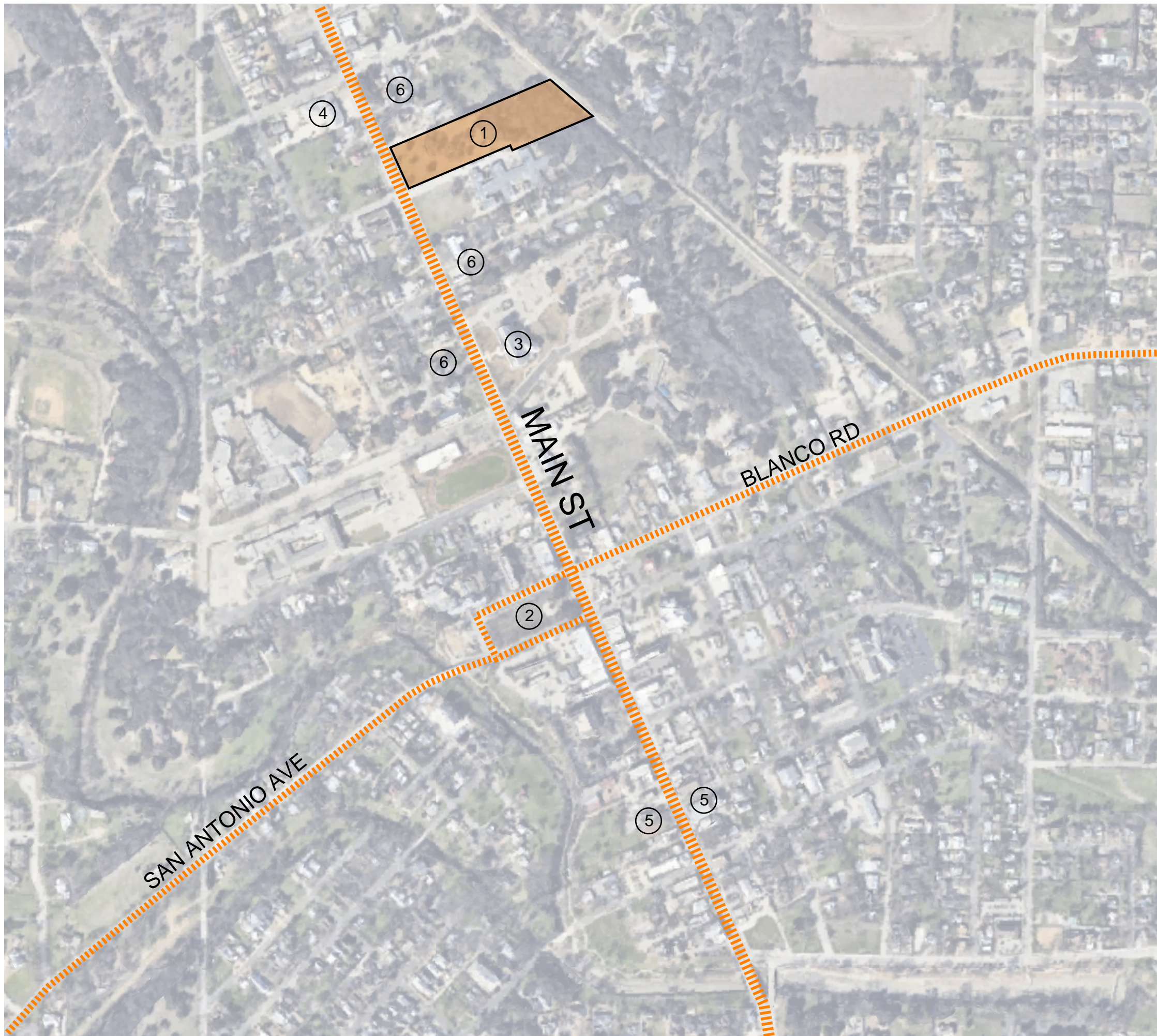




PROPOSED MEDICAL OFFICE BUILDING - 701 MAIN ST BOERNE, TEXAS



- ① PROJECT SITE
- ② MAIN PLAZA
- ③ CITY HALL
- ④ FIRE STATION
- ⑤ COMMERCIAL ZONE - NO/MINIMAL SETBACK
- ⑥ COMMERCIAL/RESIDENTIAL ZONE VARIED/INCREASED SETBACKS

BUILDINGS IN LIMITED TO NO SETBACK
COMMERCIAL ZONE ON MAIN ST



BUILDINGS IN VARIED SETBACK
RESIDENTIAL ZONE ON MAIN ST



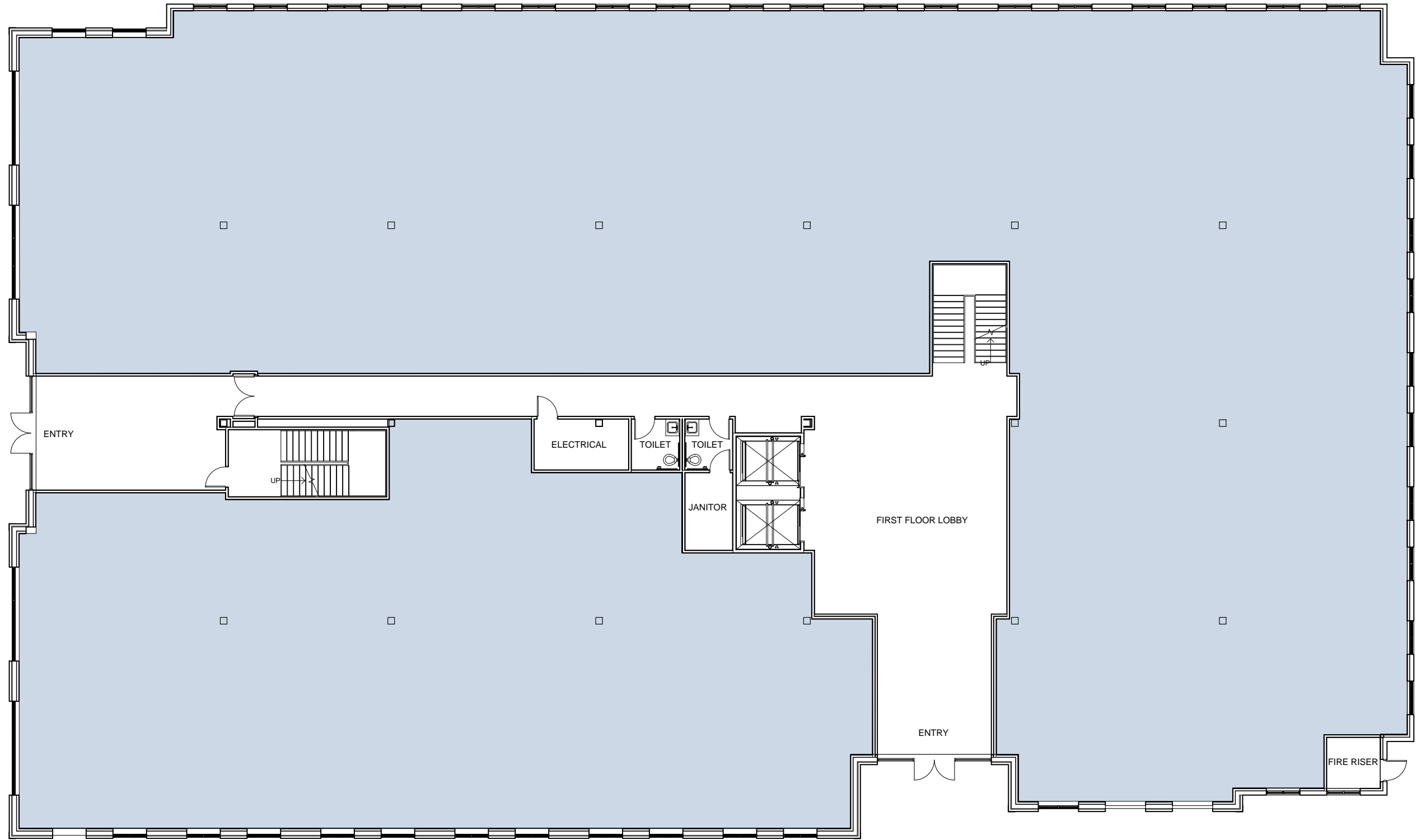
2 STORY, 49,000 SF OF RENTABLE SPACE
220 +/- PARKING SPACES
PEDESTRIAN PLAZA ALONG MAIN ST
LARGE AREAS OF EXISTING TREES TO BE SAVED



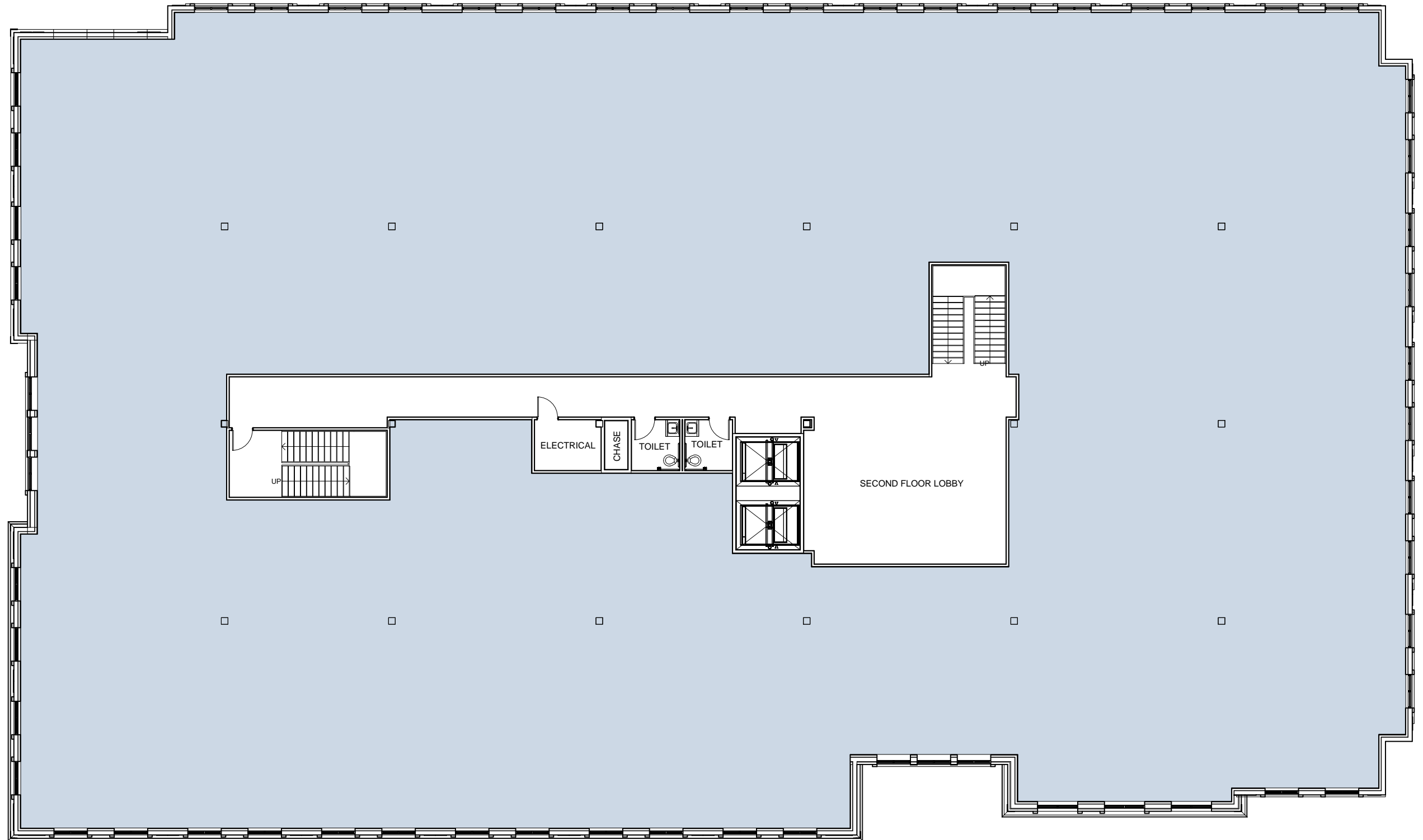
2 STORY, 48,000 SF OF RENTABLE SPACE
215 +/- PARKING SPACES
DEEPENED LANDSCAPE ZONE ALONG MAIN ST







FIRST FLOOR PLAN



SECOND FLOOR PLAN



- PAINTED CONCRETE PANEL
- DECORATIVE EIFS BANDING AND PROFILES
- BRICK VENEER W/ CAST STONE ACCENTS

WEST ELEVATION



SOUTH ELEVATION



EAST ELEVATION



NORTH ELEVATION

